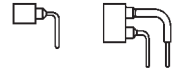


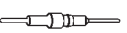


Right angle receptacles, solder tail

Receptacles accept pins
Ø 0.40–0.56 mm

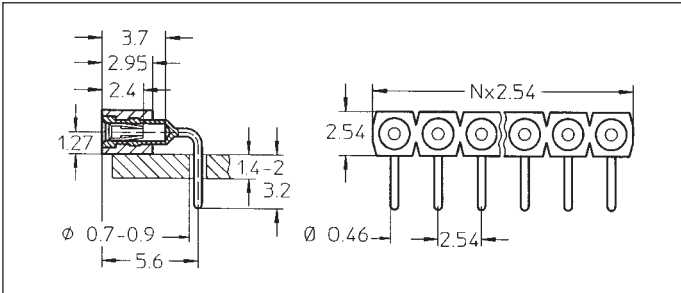


For corresponding connectors see pages 43 to 46

Platings	Sleeve 	Clip 	Pin 
91	5 µm Sn Pb	0,25 µm Au	
93	5 µm Sn Pb	0,75 µm Au	

Ordering information

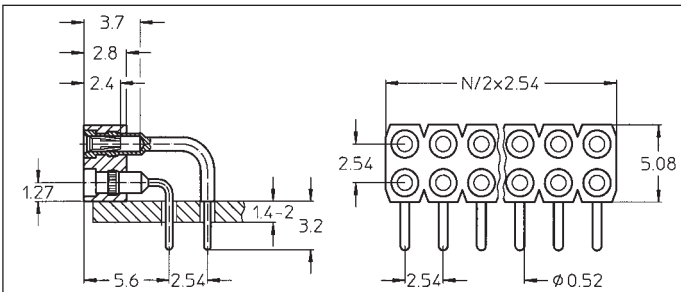
Replace **xx** with the number of poles, e.g. 499-93-2**xx**-10-003
for a double row version with 8 pins per row becomes:
499-93-2**16**-10-003



399-91-1xx-10-003
399-93-1xx-10-003

Right angle receptacle: single row

Availability from: 1 to 64 contacts
Standard number of contacts 5, 6, 8, 10, 14, 16, 20, 21, 25, 30, 32, 48, 56, 60, 64



499-91-2xx-10-003
499-93-2xx-10-003

Right angle receptacle: double row

Availability from: 4 to 72 contacts
Standard number of contacts 40, 44, 56, 64, 72