

Features

- Lead free
- RoHS compliant*
- Increased lead density
- Custom circuits available per factory

For information on thin film applications, download Bourns' Thin Film Application Note.

4400T - Thin Film Wide Body Gull Wing

Product Characteristics

Resistance Range10 to 150K ohms
 Resistance Tolerance
±0.1 %, ±0.5 %, ±1 %
 Temperature Coefficient
±100 ppm/°C, ±50 ppm/°C,
 ±25 ppm/°C
 Temperature Range
-55 °C to +125 °C
 Insulation Resistance
10,000 megohms minimum
 TCR Tracking±5 ppm/°C
 Maximum Operating Voltage50 V

Environmental Characteristics

TESTS PER MIL-STD-202ΔR MAX
 Thermal Shock 0.1 %
 Short Time Overload 0.1 %
 Resistance to Soldering Heat 0.1 %
 Moisture Resistance 0.5 %
 Life 0.5 %

Physical Characteristics

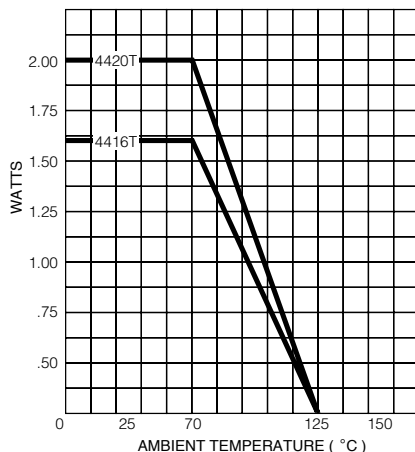
Lead Frame Material
Copper, solder coated
 Body Material Flammability
Conforms to UL94V-0
 Body MaterialNovolac Epoxy

How To Order

44 16 T - 2 - 2222 F A B L

Model (44 = SOL Wide Body Gull Wing)
 Number of Pins
 Physical Config. • T = Thin Film
 Electrical Configuration
 • 2 = Bussed
 • 1 = Isolated
 Resistance Code
 • First 3 digits are significant
 • Fourth digit represents the number of zeros to follow.
 Absolute Tolerance Code
 • B = ±0.1% • F = ±1%
 • D = ±0.5%
 Temperature Coefficient Code
 • A = ±100ppm/°C • C = ±25ppm/°C
 • B = ±50ppm/°C
 Ratio Tolerance (Optional)
 • A = ±0.05% to R1 • D = ±0.5% to R1
 • B = ±0.1% to R1
 Termination
 L = Tin-plated (lead free)

Package Power Temp. Derating Curve

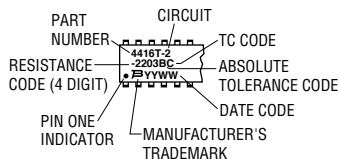


Package Power Ratings at 70 °C

4416T1.60 watts
 4420T2.00 watts

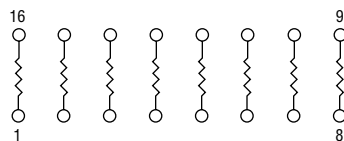
Typical Part Marking

Represents total content. Layout may vary.



Isolated Resistors (1 Circuit)

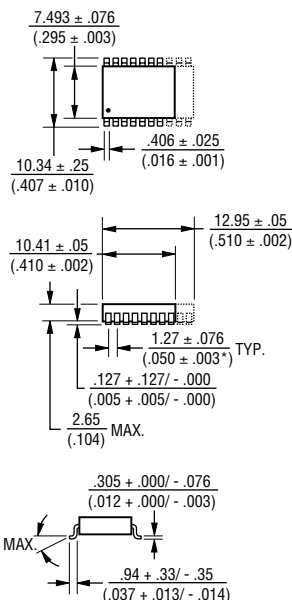
Available in 16 and 20 Pin



These models incorporate 8 or 10 thin-film resistors of equal value, each connected between a separate pin.

Power Rating per Resistor0.15 watt
 Resistance Range10 to 150K ohms

Product Dimensions

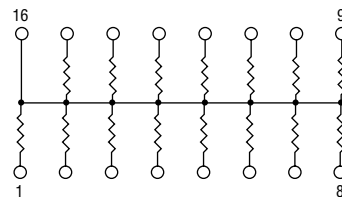


Governing dimensions are in metric. Dimensions in parentheses are inches and are approximate.

*Terminal centerline to centerline measurements made at point of emergence of the lead from the body.

Bussed Resistors (2 Circuit)

Available in 16 and 20 Pin



These models incorporate 15 or 19 thin-film resistors of equal value, each connected by a common pin.

Power Rating per Resistor0.10 watt
 Resistance Range10 to 75K ohms

Consult factory for other available options.

REV. 01/05
 *RoHS Directive 2002/95/EC Jan 27 2003 including Annex Specifications are subject to change without notice. Customers should verify actual device performance in their specific applications.