

# HIGH FREQUENCY MAGNETICS

## T1/E1 Through Hole Hardened Transformer

TM00126

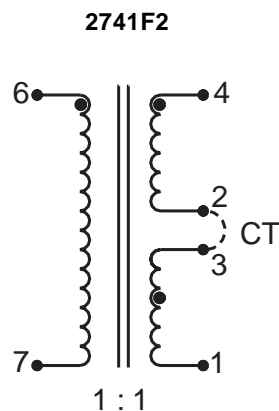
- Operates at the T1 rate of 1.544 Mb/s and the E1 rate of 2.048 Mb/s
- Winding (4-1) is hardened to handle a 6A surge current for 1 second
- Winding (4-1) is designed to handle simplex-feed remote powering current
- Maximum inductance unbalance of center-tapped winding is 0.1%
- Operating temperature range: -40° C to +85° C
- Meets IEC 695, 2-2 flammability requirements
- PWB Process Capability: standard printed wiring board assembly techniques, total-immersion cleaning
- Reliability testing: shock, vibration, temperature cycling, temperature - humidity - bias

### ELECTRICAL SPECIFICATIONS AT 25° C

Part Number	Turns Ratio ±2%	Inductance <sup>1</sup> mH Min	DCR Ω max		Leakage Inductance <sup>2</sup> μH max	Interwinding Capacitance pF max	Minimum Interwinding Breakdown Voltage Vrms
	(6-7) : (4-1) <sup>3</sup>	(6-7)	(6-7)	(4-1) <sup>3</sup>	(6-7)	between (6-7) and (4-2)(3-1)	
2741F2	1 : 1 CT	1.1	0.72	0.45	3.5	18	850

- measured at 10 Hz, 0.1 Vac
- measured at 100 kHz, 0.1 Vac
- connect 2 & 3

### SCHEMATIC

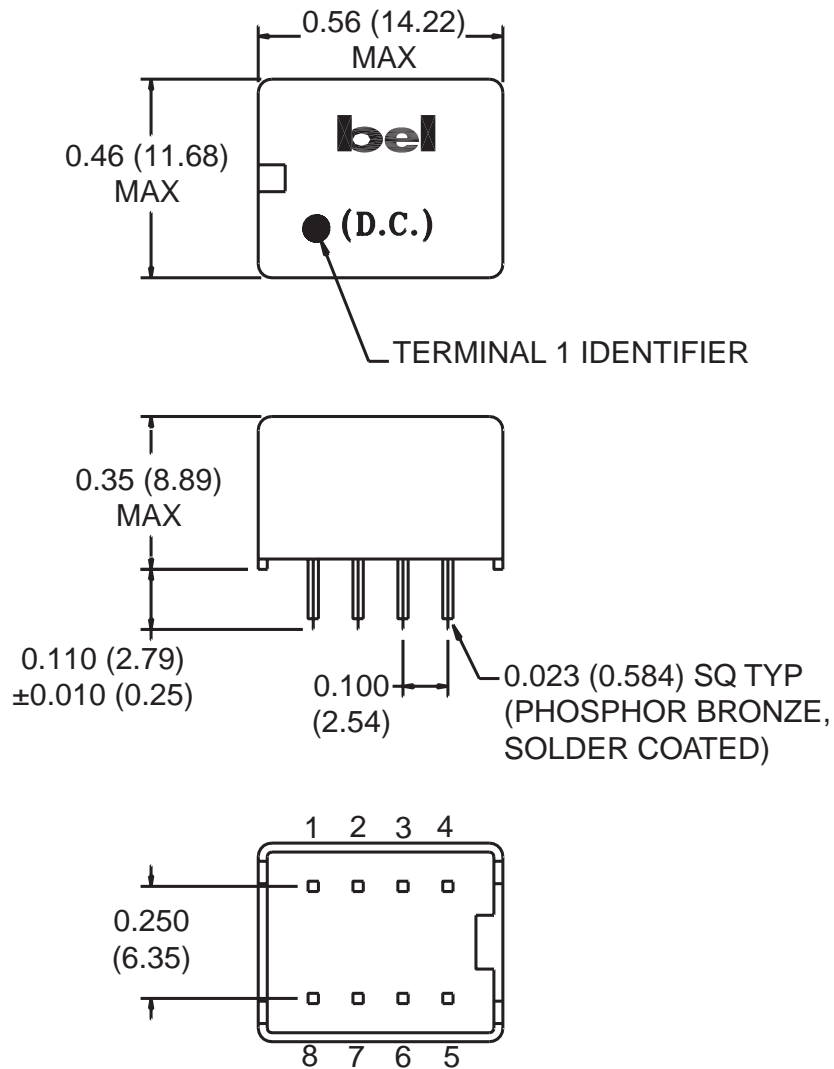


## HIGH FREQUENCY MAGNETICS

### T1/E1 Through Hole Hardened Transformer

#### MECHANICAL

2741F2



Unless otherwise specified, dimensions are nominal and in inches (millimeters).

©2000 Bel Fuse Inc. Specifications subject to change without notice. 09.00

#### CORPORATE

**Bel Fuse Inc.**  
198 Van Vorst Street  
Jersey City, NJ 07302  
Tel 201-432-0463  
Fax 201-432-9542  
www.belfuse.com

T1-60

#### FAR EAST

**Bel Fuse Ltd.**  
8F / 8 Luk Hop Street  
San Po Kong  
Kowloon, Hong Kong  
Tel 852-2328-5515  
Fax 852-2352-3706  
www.belfuse.com

#### EUROPE

**Bel Fuse Europe Ltd.**  
Preston Technology Management Centre  
Marsh Lane, Suite G7, Preston  
Lancashire, PR1 8UD, U.K.  
Tel 44-1772-556601  
Fax 44-1772-888366  
www.belfuse.com