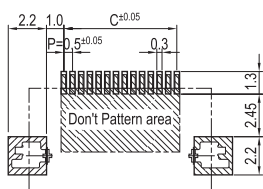
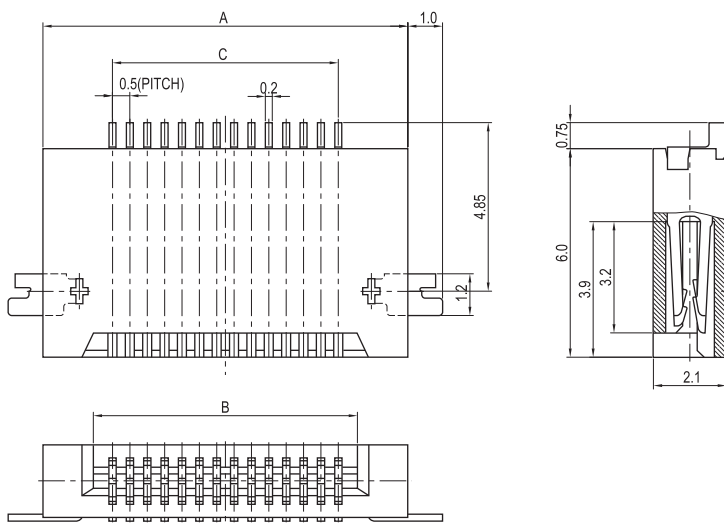
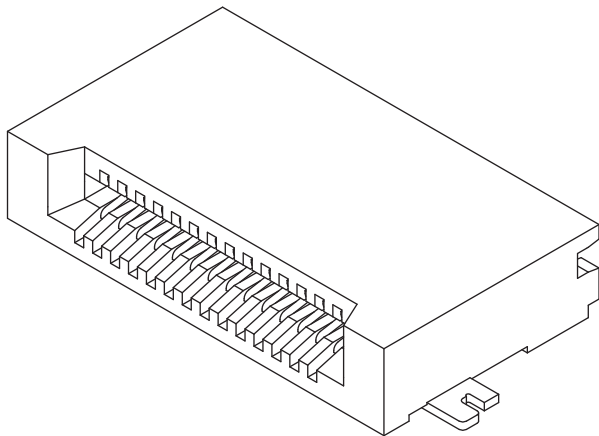


0.50mm (0.02") PITCH CONNECTOR

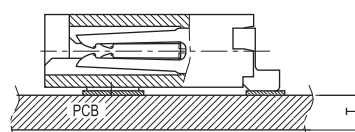


FPC/FFC Connector Housing

05010HR-NNA Series
SMT, NON-ZIF(Dual Sided Contact Type)
Right Angle



PCB LAYOUT



PCB ASS'Y

Material

I/NO	DESCRIPTION	TITLE	MATERIAL
1	HOUSING	05010HR	PA6T or PA46 or LCP, UL 94V Grade
2	TERMINAL	05010TR	Phosphor Bronze & Tin plated
3	HOOK	05006LR	Phosphor Bronze & Tin plated

Available Pin

PARTS NO.	A	B	C
05010HR-10A	8.5	5.5	4.5
05010HR-12A	9.5	6.5	5.5
05010HR-13A	10.0	7.0	6.0
05010HR-14A	10.5	7.5	6.5
05010HR-18A	12.5	9.5	8.5
05010HR-20A	13.5	10.5	9.5
05010HR-21A	14.0	11.0	10.0
05010HR-22A	14.5	11.5	10.5
05010HR-24A	15.5	12.5	11.5
05010HR-26A	16.5	13.5	12.5
05010HR-30A	18.5	15.5	14.5
05010HR-32A	19.5	16.5	15.5
05010HR-33A	20.0	17.0	16.0
05010HR-34A	20.5	17.5	16.5
05010HR-35A	21.0	18.0	17.0
05010HR-36A	21.5	18.5	17.5
05010HR-38A	22.5	19.5	18.5
05010HR-40A	23.5	20.5	19.5
05010HR-45A	26.0	23.0	22.0
05010HR-50A	28.5	25.5	24.5

Specification

ITEM	SPEC
Voltage Rating	AC/DC 50V
Current Rating	AC/DC 0.5A
Operating Temperature	-25°C ~ +85°C
Contact Resistance	30mΩ MAX
Withstanding Voltage	AC500V/1min
Insulation Resistance	100MΩ MIN
Applicable Wire	-
Applicable P.C.B	0.8 ~ 1.6mm
Applicable FPC/FFC	0.30±0.05mm
Solder Height	0.15mm
Crimp Tensile Strength	-
UL FILE NO	-