

Model No.: FR0915M00-DJ12

Rev. No.: 1

915.00 MHz SAW Resonator

A. Feature:

1. One-port SAW Resonator

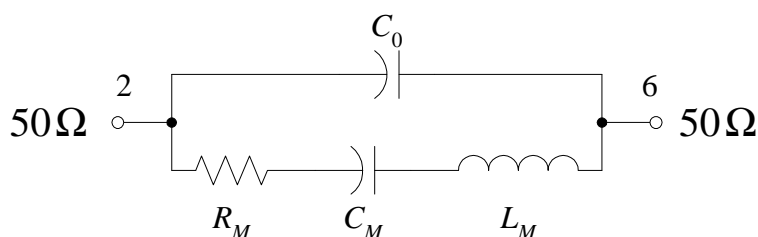
B. Maximum Ratings:

1. Input Power Level: 0dBm
2. DC Voltage: 10V
3. Storage Temperature: -40°C to +85°C
4. Operating Temperature Range: -40°C to +85°C

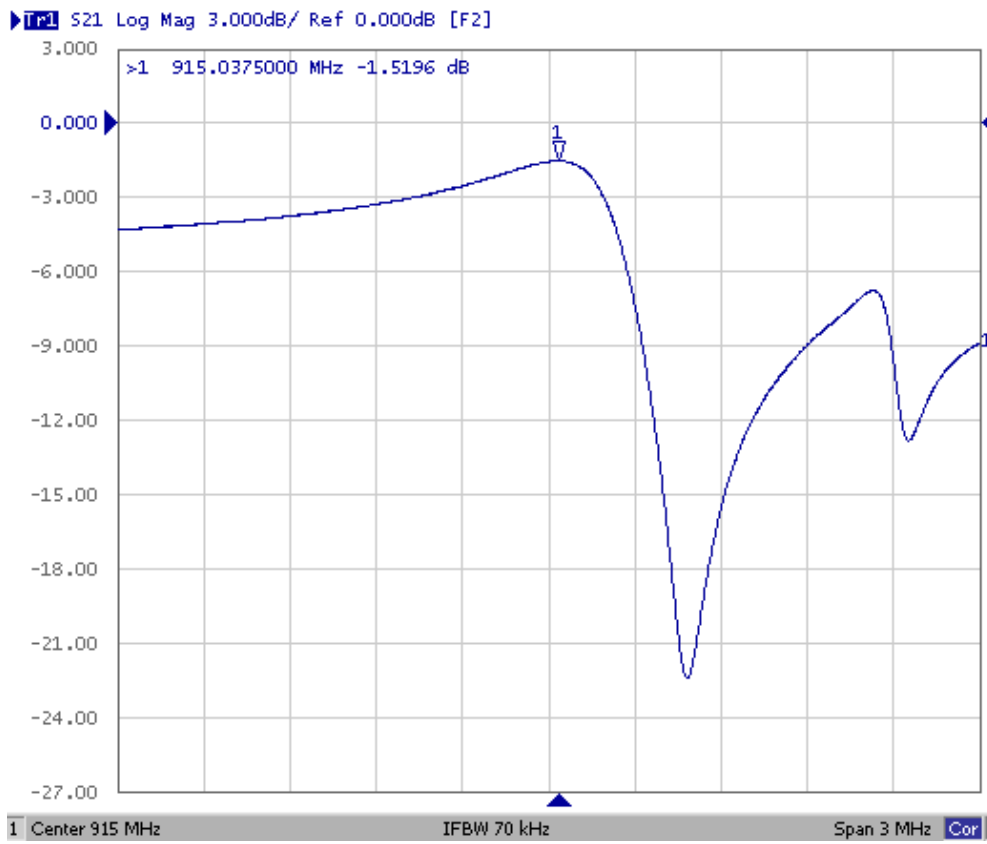
C. Electrical Specifications:

Ambient Temperature: 23°C

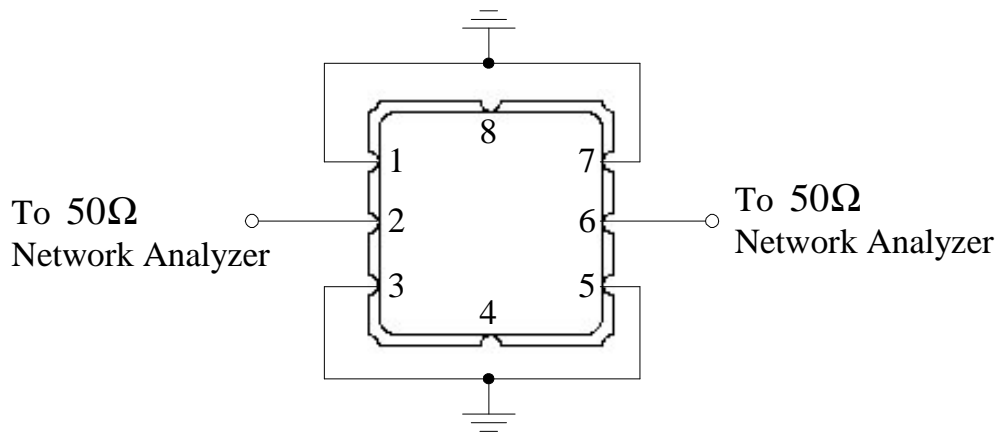
| Item | Unit | Min. | Typ. | Max. |
|--|--------------------|--------|---------|--------|
| Center Frequency, f_r | MHz | 914.85 | 915.00 | 915.15 |
| Insertion Loss, IL | dB | - | 1.5 | 2.5 |
| Unloaded quality factor, Q_U | | - | 8000 | - |
| Loaded quality factor, Q_L | | - | 1200 | - |
| RF Equivalent RLC Model | | | | |
| Motional Resistance, R_M | Ω | - | 18 | - |
| Motional Capacitance, C_M | fF | - | 1.3651 | - |
| Motional Inductance, L_M | μ H | - | 22.1564 | - |
| Shunt Static Capacitance, C_0 | pF | - | 1.6 | - |
| Turnover Temperature, T_0 | °C | 20 | 40 | 55 |
| Frequency Temperature Coefficient, FTC | ppm/k ² | - | 0.032 | - |

D. RF Equivalent Model:


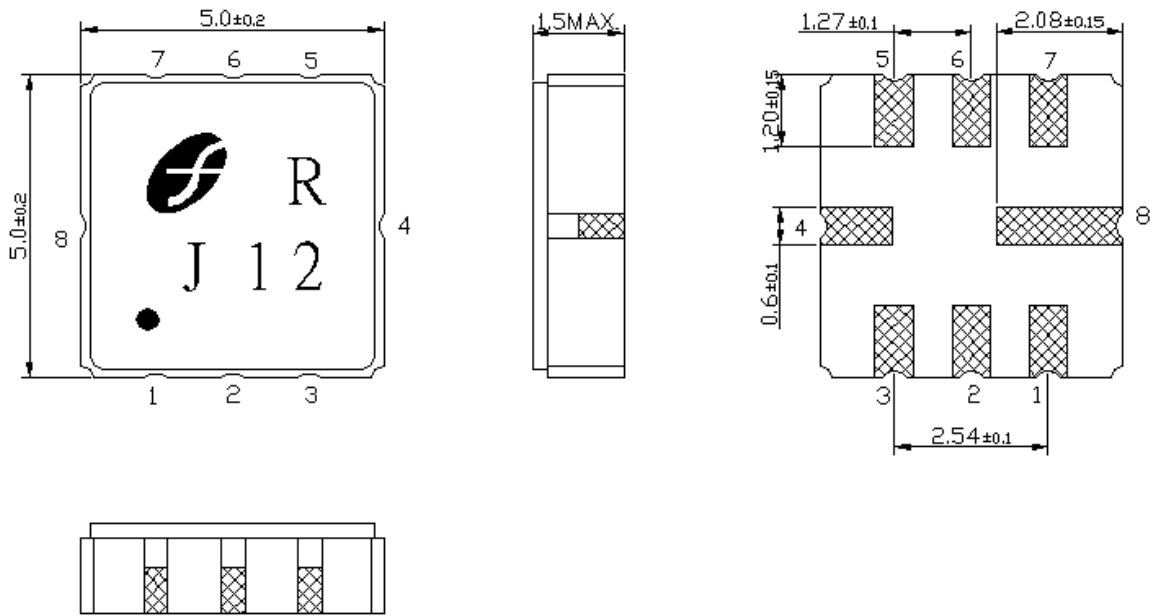
E. Characteristics:



F. Test Circuit:



G. Package and pin configuration:



(Unit: mm)

- | | |
|-----------------------|-----------------------|
| Pin 1: Ground | Pin 5: Ground |
| Pin 2: Input | Pin 6: Output |
| Pin 3: Ground | Pin 7: Ground |
| Pin 4: Package Ground | Pin 8: Package Ground |