

KPI-210C

DESCRIPTION

The photointerrupter high-performance standard type KPI-210C combines a high-output GaAs IRED with a high sensitivity phototransistor.

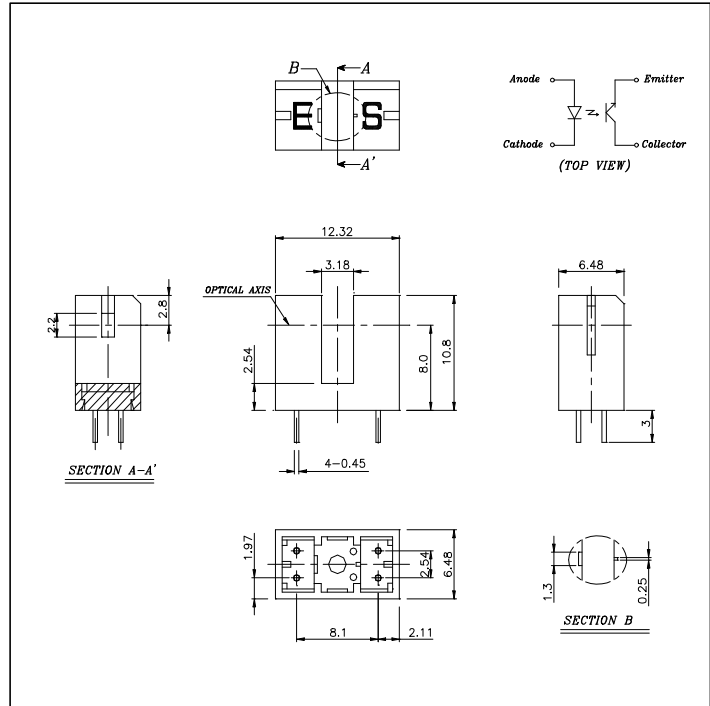
FEATURES

- High Performance
- GAP : 3.18mm
- High Speed Response
- Widely Applicable

APPLICATIONS

- Tape-end Sensor
- Timing Sensor
- Edge Sensor
- Copiers

DIMENSIONS



ABSOLUTE MAXIMUM RATINGS

(Ta=25)

Parameter		Symbol	Rating	Unit
Input	Forward Current	I_F	60	mA
	Pulse Forward Current ^{*1}	I_{FP}	1	A
	Reverse Voltage	V_R	5	V
	Power Dissipation	P_D	100	mW
Output	Collector Emitter Voltage	V_{CEO}	30	V
	Emitter Collector Voltage	V_{ECO}	5	V
	Collector Current	I_C	40	mA
	Collector Power Dissipation	P_C	100	mW
Operating Temperature ^{*2}		T_{OPR}	-25 ~ +85	
Storage Temperature ^{*2}		T_{STG}	-40 ~ +85	
Soldering Temperature ^{*3}		T_{SOL}	260	

*1. Pulse width : t_w 100 μ sec.period : T=10msec

*2. No icebound or dew

*3. For MAX. 5 seconds at the position of 1mm from the package

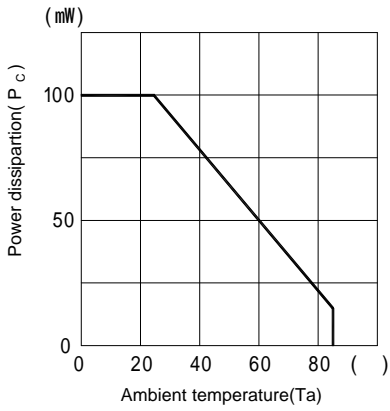
ELECTRO-OPTICAL CHARACTERISTICS

(Ta=25)

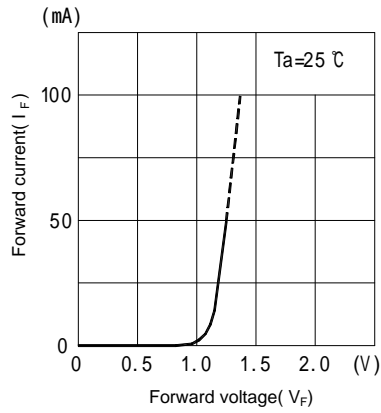
Parameter		Symbol	Conditions	MIN.	TYP.	MAX.	Unit	
Input	Forward Voltage	V_F	$I_F=20mA$	-	1.2	1.7	V	
	Reverse Current	I_R	$V_R=5V$	-	-	10	μA	
	Capacitance	C_T	f=1KHz	-	25	-	μF	
	Peak Wavelength	λ_P		-	940	-	nm	
Output	Dark Current	I_{CEO}	$V_{CE}=5V, 0 Lux$	-	-	10	μA	
Coupled	Light Current	I_L	$V_{CE}=5V, I_F=20mA$ (Non-shading)	0.5	-	15	mA	
	Collector Emitter Saturation Voltage	$V_{CE(SAT)}$	$I_F=20mA, I_C=0.1mA$	-	-	0.4	V	
	Response Time	Rise Time	t_r	$V_{CC}=5V, I_C=2mA, R_L=100$	-	5	-	μs
		Fall Time	t_f		-	5	-	μs

KPI-210C

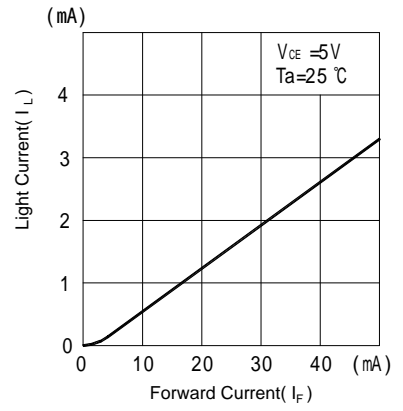
Collector power dissipation Vs. Ambient temperature



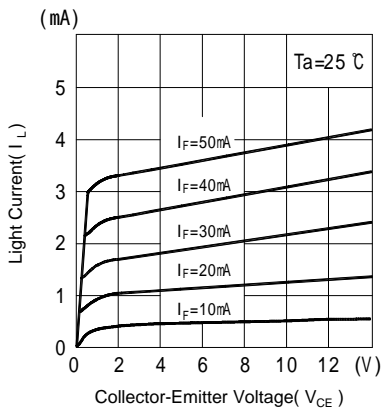
Forward current Vs. Forward voltage



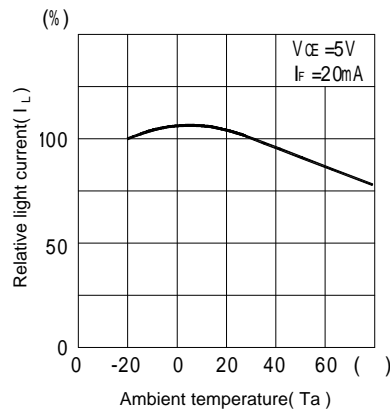
Light current Vs. Forward current



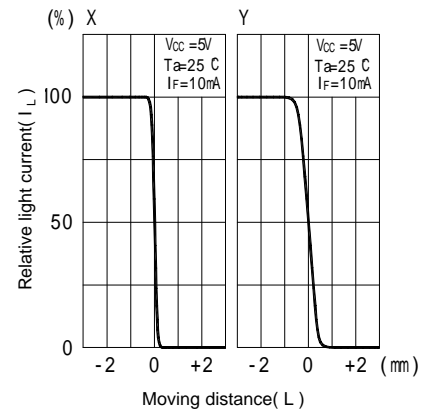
Light current Vs. Collector-Emitter voltage



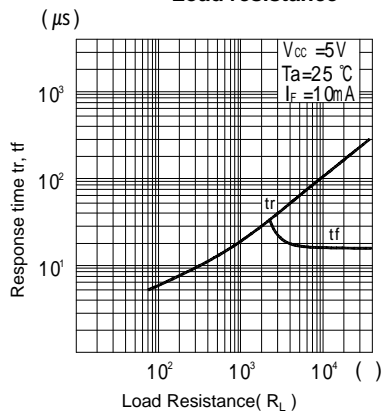
Relative light current Vs. Ambient temperature



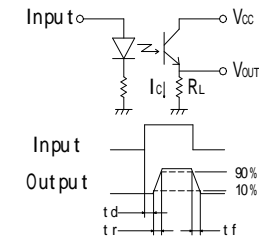
Relative light current Vs. Moving distance



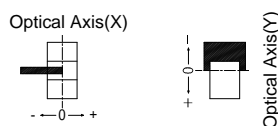
Switching time Vs. Load resistance



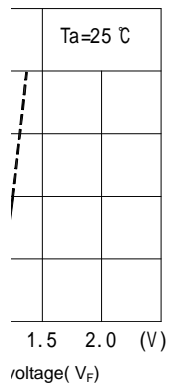
Response time measurement circuit



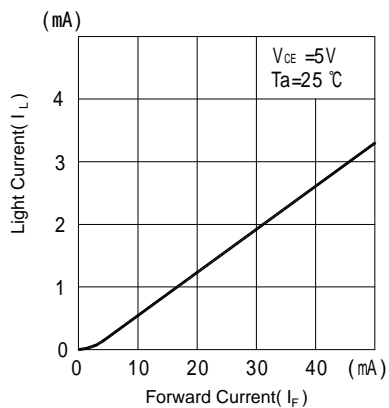
Method of measuring position detection characteristic



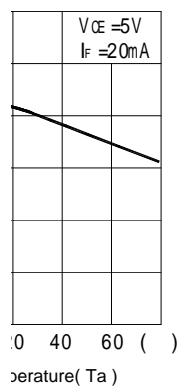
d current Vs. ard voltage



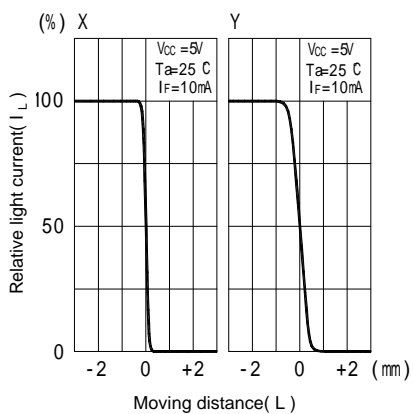
Light current Vs. Forward current



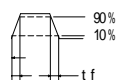
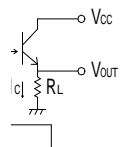
Light current Vs. Temperature



Relative light current Vs. Moving distance



Measurement circuit



Mounting position
Characteristic

