

Features

- Epitaxial Planar Die Construction
- Ultra-Small Leadless Surface Mount Package
- Ideally Suited for Automated Assembly Processes
- **Lead Free By Design/RoHS Compliant (Note 1)**
- **"Green" Device (Note 2)**

Mechanical Data

- Case: DFN1006-3
- Case Material: Molded Plastic, "Green" Molding Compound. UL Flammability Classification Rating 94V-0
- Moisture Sensitivity: Level 1 per J-STD-020C
- Terminal Connections: Collector Dot (See Diagram)
- Terminals: Finish — NiPdAu annealed over Copper leadframe. Solderable per MIL-STD-202, Method 208
- Marking Code N5, Dot denotes Collector Side
- Ordering Information: See Page 4
- Weight: 0.001 grams (approximate)

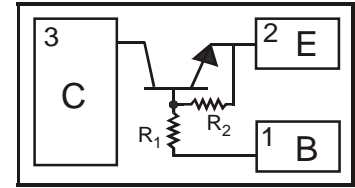
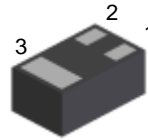
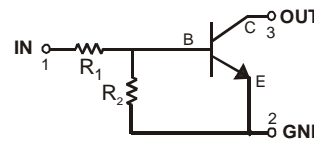
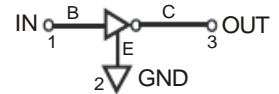


Fig. 1



Schematic and Pin Configuration



Equivalent Inverter Circuit

Fig. 2

Component P/N	R1(NOM)	R2(NOM)	Figure
DDTC114ELP	10K	10K	2

Maximum Ratings @T_A = 25°C unless otherwise specified

Characteristic	Symbol	Value	Unit
Supply Voltage	V _{CC}	50	V
Input Voltage	V _{IN}	-10 to +40	V
Output Current	I _O	50	mA
Power Dissipation (Note 3)	P _d	250	mW
Power Deration above 25°C	P _{der}	2	mW/°C
Collector Current	I _{C(max)}	100	mA

Thermal Characteristics

Characteristic	Symbol	Value	Unit
Junction Operation and Storage Temperature Range	T _J , T _{stg}	-55 to +150	°C
Thermal Resistance, Junction to Ambient Air (Note 3) (Equivalent to one heated junction of NPN)	R _{θJA}	400	°C/W

- Notes:
1. No purposefully added lead.
 2. Diodes Inc.'s "Green" policy can be found on our website at http://www.diodes.com/products/lead_free/index.php.
 3. Device mounted on FR-4 PCB, 1" x 0.85" x 0.062"; pad layout as shown on page 5 or Diodes Inc. suggested pad layout document AP02001, which can be found on our website at <http://www.diodes.com/datasheets/ap02001.pdf>.

Electrical Characteristics @ $T_A = 25^\circ\text{C}$ unless otherwise specified

Characteristic	Symbol	Min	Typ	Max	Unit	Test Condition
Off Characteristics (Note 4)						
Collector-Base Breakdown Voltage	$V_{(BR)CBO}$	50	—	—	V	$I_C = 10\mu\text{A}, I_E = 0$
Collector-Emitter Breakdown Voltage	$V_{(BR)CEO}$	50	—	—	V	$I_C = 1.0\text{mA}, I_B = 0$
Emitter-Base Breakdown Voltage*	$V_{(BR)EBO}$	5	—	—	V	$I_E = 50\mu\text{A}, I_C = 0$
Collector Cutoff Current*	I_{CEX}	—	—	0.5	μA	$V_{CE} = 50\text{V}, V_{EB(OFF)} = 3.0\text{V}$
Base Cutoff Current (I_{BEX})	I_{BL}	—	—	0.5	μA	$V_{CE} = 50\text{V}, V_{EB(OFF)} = 3.0\text{V}$
Collector-Base Cut Off Current	I_{CBO}	—	—	0.5	μA	$V_{CB} = 50\text{V}, I_E = 0$
Collector-Emitter Cut Off Current, $I_{O(OFF)}$	I_{CEO}	—	—	1	μA	$V_{CB} = 50\text{V}, I_B = 0$
Emitter-Base Cut Off Current	I_{EBO}	—	—	0.4	mA	$V_{EB} = 4\text{V}, I_C = 0$
Input Off Voltage	$V_{I(OFF)}$	—	1.16	0.5	V	$V_{CC} = 5\text{V}, I_O = 100\mu\text{A}$
On Characteristics (Note 4)						
DC Current Gain	h_{FE}	10	—	—	—	$V_{CE} = 5\text{V}, I_C = 1\text{mA}$
		15	—	—	—	$V_{CE} = 5\text{V}, I_C = 2\text{mA}$
		60	—	—	—	$V_{CE} = 5\text{V}, I_C = 10\text{mA}$
		100	—	—	—	$V_{CE} = 5\text{V}, I_C = 50\text{mA}$
		90	—	—	—	$V_{CE} = 5\text{V}, I_C = 70\text{mA}$
Collector-Emitter Saturation Voltage	$V_{CE(SAT)}$	—	—	0.15	V	$I_C = 10\text{mA}, I_B = 1\text{mA}$
		—	—	0.2	V	$I_C = 50\text{mA}, I_B = 5\text{mA}$
		—	—	0.25	V	$I_C = 50\text{mA}, I_B = 2.5\text{mA}$
		—	—	0.25	V	$I_C = 50\text{mA}, I_B = 10\text{mA}$
		—	—	0.3	V	$I_C = 70\text{mA}, I_B = 10\text{mA}$
Base-Emitter Turn-On Voltage*	$V_{BE(ON)}$	—	—	0.85	V	$V_{CE} = 5\text{V}, I_C = 2\text{mA}$
		—	—	0.95	V	$V_{CE} = 5\text{V}, I_C = 10\text{mA}$
Base-Emitter Saturation Voltage*	$V_{BE(SAT)}$	—	—	0.98	V	$I_C = 10\text{mA}, I_B = 1\text{mA}, V_{CE} = 5\text{V}$
		—	—	1.2	V	$I_C = 50\text{mA}, I_B = 5\text{mA}, V_{CE} = 5\text{V}$
Input-On Voltage	$V_{I(ON)}$	2.5	1.6	—	V	$V_O = 0.3\text{V}, I_O = 50\text{mA}$
Input Current	I_I	—	—	0.88	mA	$V_I = 5\text{V}$
Output On Voltage (Same as $V_{CE(SAT)}$)	$V_{O(ON)}$	—	—	0.3	V	$I_I = 2.5\text{mA}, I_O = 50\text{mA}$
Input Resistance	R1	7	10	13	$\text{K}\Omega$	—
Resistance Ratio	(R2/R1)	0.8	1	1.2	—	—
Small Signal Characteristics						
Current Gain-Bandwidth Product	f_T	—	250	—	MHz	$V_{CE} = 10\text{V}, I_E = 5\text{mA}, f = 1\text{MHz}$

* Guaranteed by design.

Note: 4. Short duration test pulse used to minimize self-heating effect.
Pulse Test: Pulse width $t_p < 300\mu\text{s}$, Duty Cycle, $d < 2\%$.

Typical Characteristics Curves

@T_A = 25°C unless otherwise specified

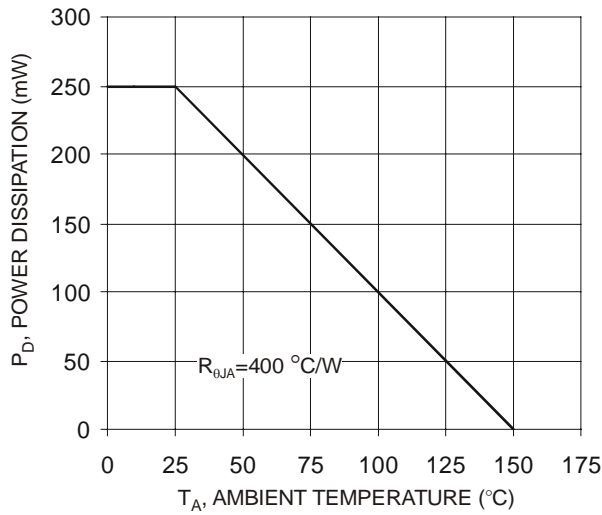


Fig. 3 Power Derating Curve

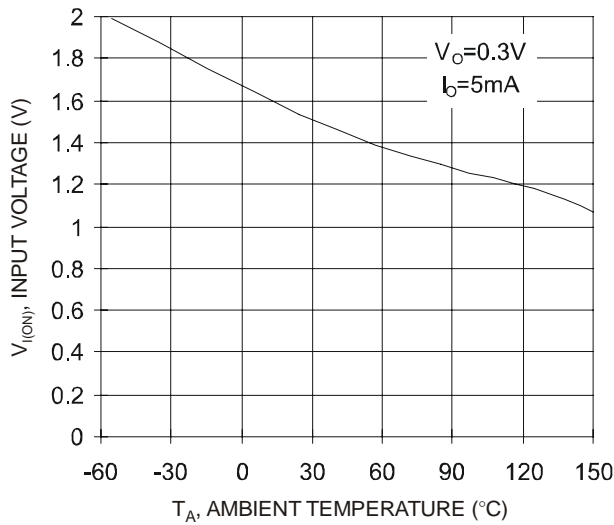


Fig. 5 Input Voltage vs. T_A

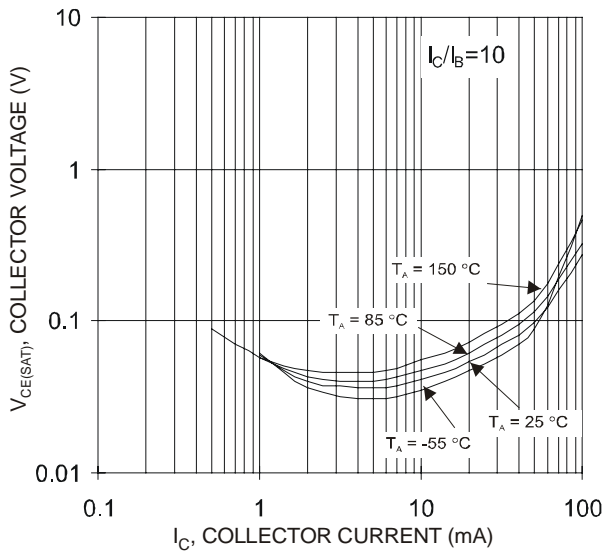


Fig. 7 V_{CE(SAT)} vs. I_C

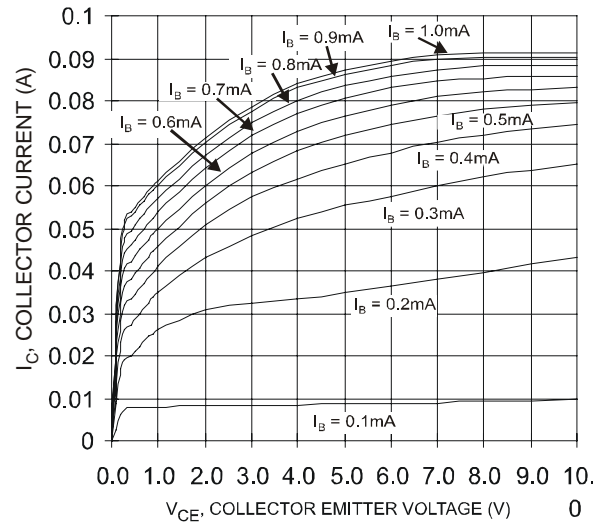


Fig. 4 I_C vs V_{CE}

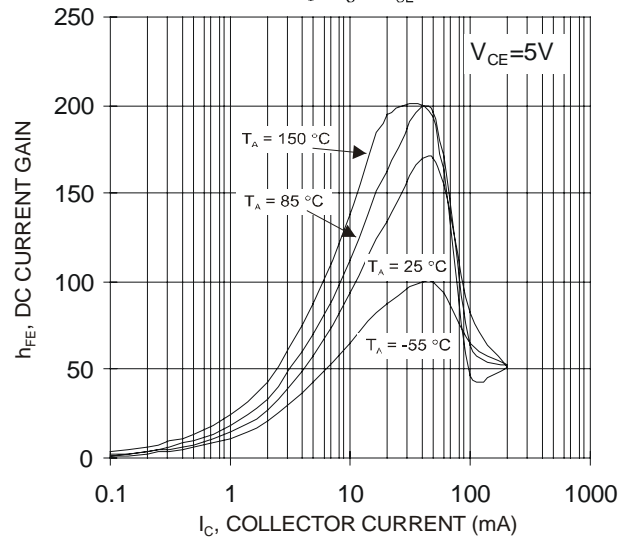


Fig. 6 DC Current Gain

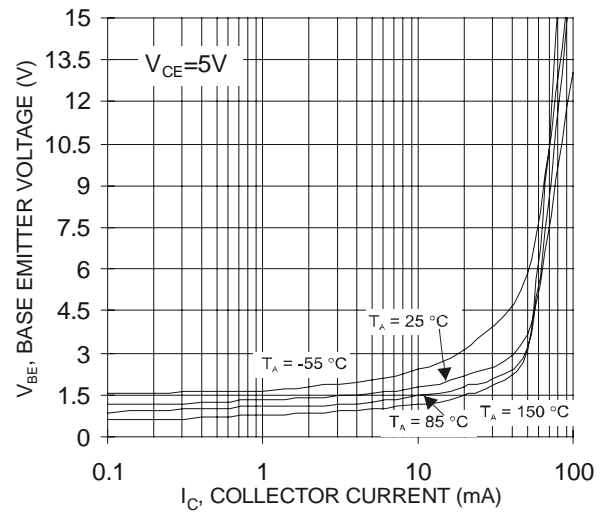


Fig. 8 V_{BE} vs. I_C

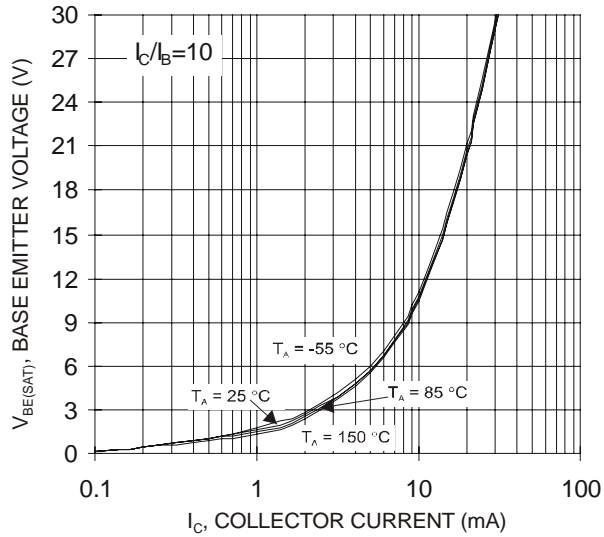


Fig. 9 $V_{BE(SAT)}$ vs. I_C

Ordering Information (Note 6)

Device	Marking Code	Packaging	Shipping
DDTC114ELP-7	N5	DFN1006-3	3000/Tape & Reel

Notes: 6. For packaging details, please see page 5 or go to our website at <http://www.diodes.com/ap2007.pdf>.

Marking Information



N5 = Product Type Marking Code
 YM = Date Code Marking
 Y = Year ex: U = 2007
 M = Month e.g. 9 = September

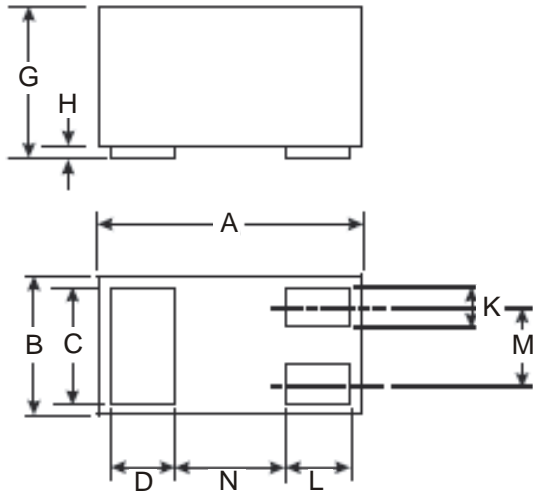
Fig. 13

Date Code Key

Year	2007	2008	2009	2010	2011	2012
Code	U	V	W	X	Y	Z

Month	Jan	Feb	Mar	Apr	May	Jun	Jul	Aug	Sep	Oct	Nov	Dec
Code	1	2	3	4	5	6	7	8	9	O	N	D

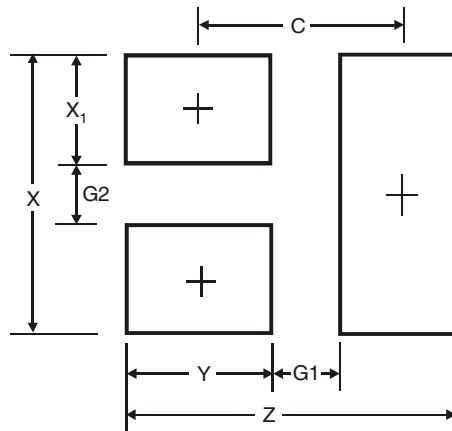
Package Outline Dimensions



DFN1006-3			
Dim	Min	Max	Typ
A	0.95	1.05	1.00
B	0.55	0.65	0.60
C	0.45	0.55	0.50
D	0.20	0.30	0.25
G	0.47	0.53	0.50
H	0	0.05	0.03
K	0.10	0.20	0.15
L	0.20	0.30	0.25
M	—	—	0.35
N	—	—	0.40
All Dimensions in mm			

Fig. 14

Suggested Pad Layout: (Based on IPC-SM-782)



DFN1006-3	
Z	1.1
G1	0.3
G2	0.2
X	0.7
X1	0.25
Y	0.4
C	0.7
All Dimensions in mm	

Fig. 15

IMPORTANT NOTICE

Diodes Incorporated and its subsidiaries reserve the right to make modifications, enhancements, improvements, corrections or other changes without further notice to any product herein. Diodes Incorporated does not assume any liability arising out of the application or use of any product described herein; neither does it convey any license under its patent rights, nor the rights of others. The user of products in such applications shall assume all risks of such use and will agree to hold Diodes Incorporated and all the companies whose products are represented on our website, harmless against all damages.

LIFE SUPPORT

Diodes Incorporated products are not authorized for use as critical components in life support devices or systems without the expressed written approval of the President of Diodes Incorporated.