

**Features**

- Frequency Range: LO & RF 10 – 2000 MHz, IF 10 – 1000 MHz
- L.O. Drive : +7 dBm
- Industry Standard SMT package
- Available in Tape-and -Reel
- Low Cost

**Description**

The MXB-2001-7 is a medium-low drive level, surface mount mixer designed for applications that require small, low cost and highly reliable surface mount components. This mixer is a double-balanced design for wideband high dynamic range use in communications up and down-converter applications.

**SURFACE MOUNT MIXER**



**Specifications**

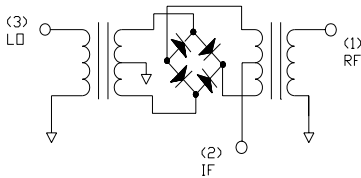
Parameter	Min	Typ	Max
Frequency Range (MHz)	5		2000
Conversion Loss (dB)		8.5	9.5
LO – RF Isolation (dB)	25	36	
LO – IF Isolation (dB)	20	28	
IIP <sub>3</sub> (dBm)		11	

**Absolute Maximum Ratings**

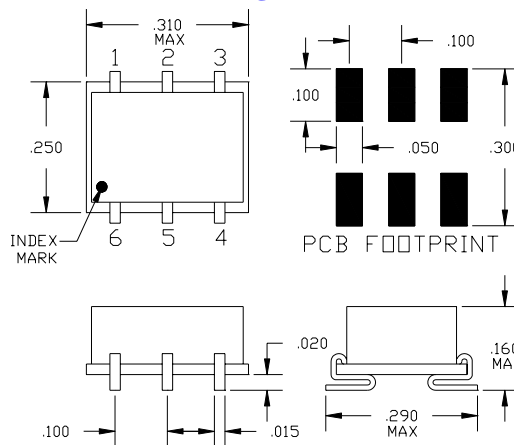
Parameter	Maximum
RF Power	+ 13 dBm
Operating Temperature	-50 to +80 °C
Storage Temperature	-65 to +100 °C
Re-flow Temperature	+ 240 °C

Notes: Test Conditions-LO +7 dBm, RF -10 dBm, IF 30 MHz  
Typical values represent Mid-band performance @ 25° C.

**Schematic**



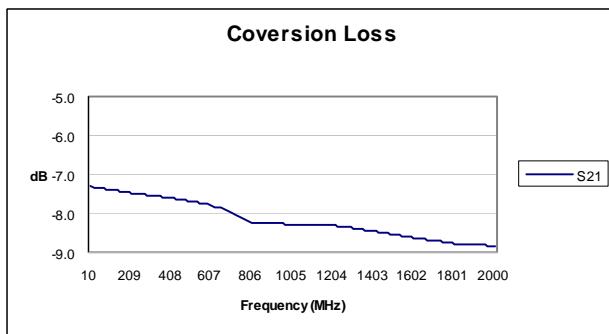
**Package – S07**



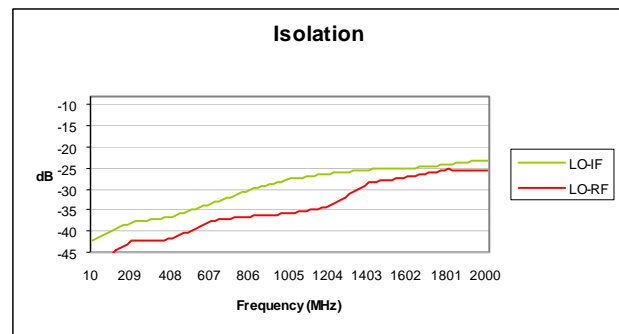
**Pin Functions**

Function	Pin
LO INPUT	1
RF INPUT	4
IF OUTPUT	5
GROUND	2,3,6

Typical Test Data – Conversion Loss



Typical Test Data – LO-RF and LO-IF Isolation



Specifications and information on this data sheet are subject to change without notice.