



**Stewart Connector Systems, Inc.**  
**Insilco Technologies Group**  
 11118 Susquehanna Trail South  
 Glen Rock, PA 17327-9199  
 (717) 235-7512 Fax: (717) 235-7954

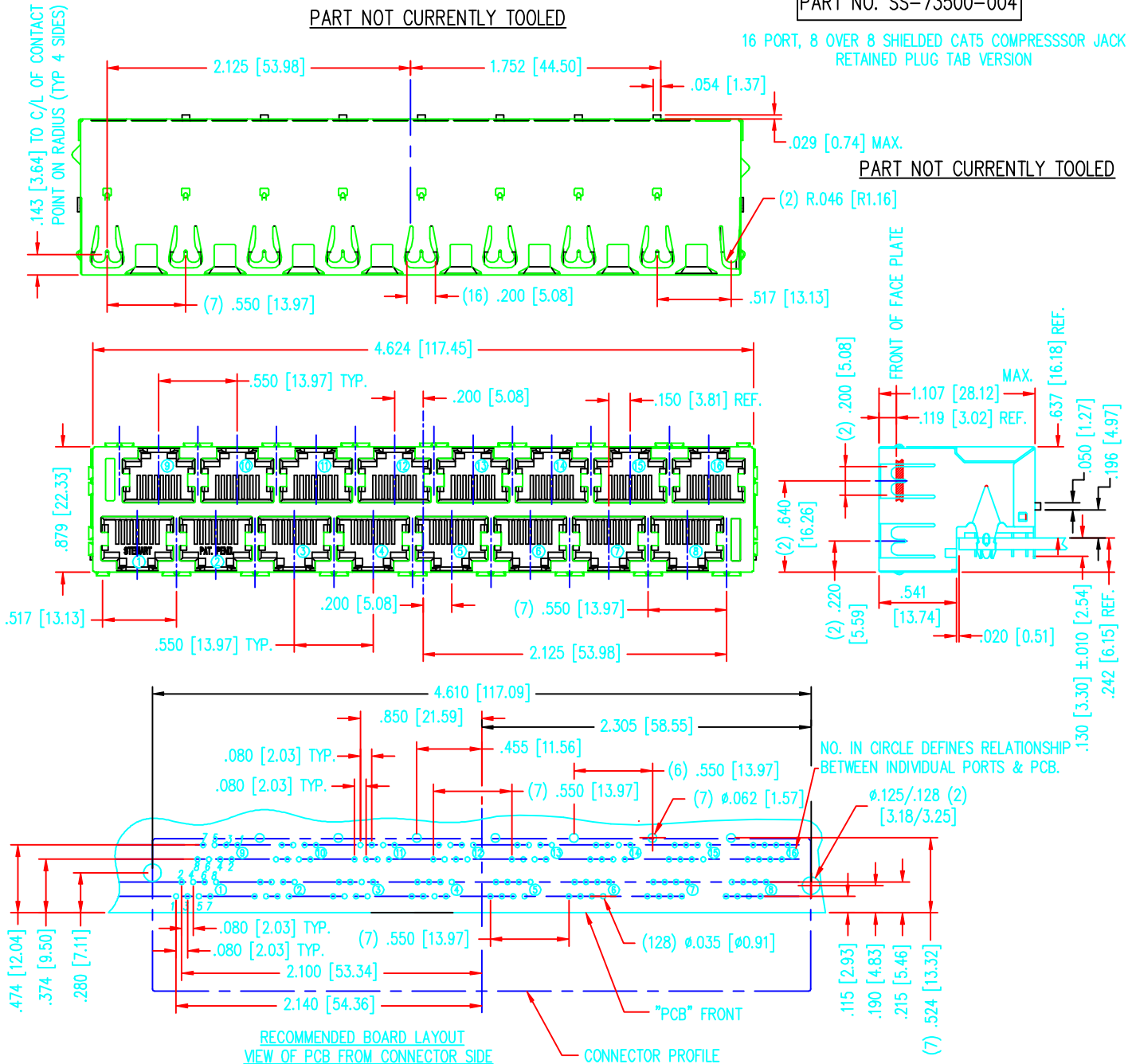
REV.	REVISION CHANGES
X0	AS DRAWN

**PART NO. SS-73500-004**

**PART NOT CURRENTLY TOOLED**

16 PORT, 8 OVER 8 SHIELDED CAT5 COMPRESSOR JACK  
 RETAINED PLUG TAB VERSION

**PART NOT CURRENTLY TOOLED**



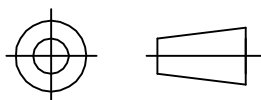
**FOR REFERENCE ONLY**

**NOTES:**

- MEETS CATEGORY 5 PERFORMANCE SPECIFICATIONS AS TESTED PER TIA/EIA 568A
- TOLERANCES COMPLY WITH F.C.C. DIMENSION REQUIREMENTS
- DIMENSIONS SHOWN ARE SUBJECT TO CHANGE WITHOUT NOTICE.
- STANDARD
- 50 MICRO-INCH SELECTIVE GOLD PLATING

CONSULT FACTORY BEFORE ORDERING

THIRD ANGLE PROJECTION



THIS DRAWING AND THE SUBJECT MATTER SHOWN THEREON ARE CONFIDENTIAL AND THE PROPRIETARY PROPERTY OF STEWART CONNECTOR SYSTEMS ("SCS") AND SHALL NOT BE REPRODUCED, COPIED OR USED IN ANY MANNER WITHOUT PRIOR WRITTEN CONSENT OF "SCS". THE SUBJECT MATTER MAY BE PATENTED OR A PATENT MAY BE PENDING. © SCS



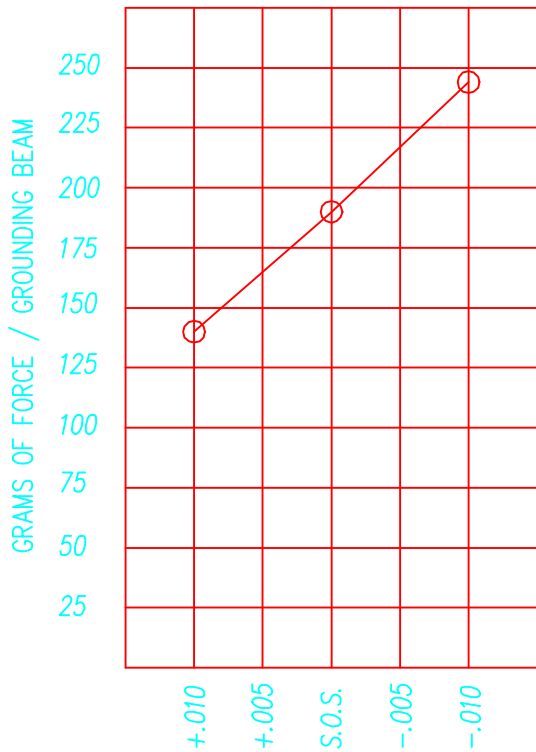
Stewart Connector Systems, Inc.  
 Insilco Technologies Group  
 11118 Susquehanna Trail South  
 Glen Rock, PA 17327-9199  
 (717) 235-7512 Fax: (717) 235-7954

REV.	REVISION CHANGES
X0	AS DRAWN

PART NOT CURRENTLY TOOLED

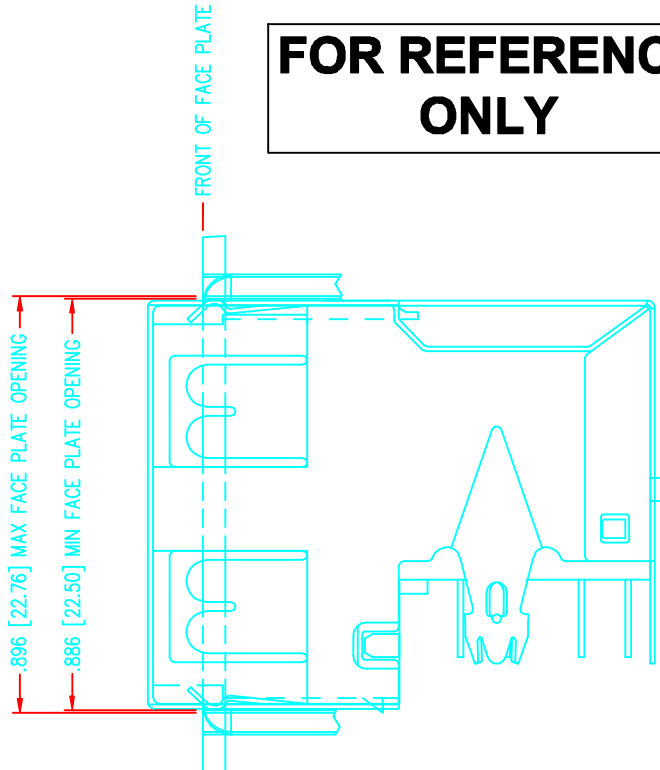
PART NO. SS-73500-004

PART NOT CURRENTLY TOOLED



PANEL GROUNDING BEAM DEFLECTION  
 S.O.S. = SUGGESTED OPENING SIZE  
 A .010 PANEL OPENING CHANGE  
 EFFECTS EACH GROUNDING BEAM  
 BY .005.

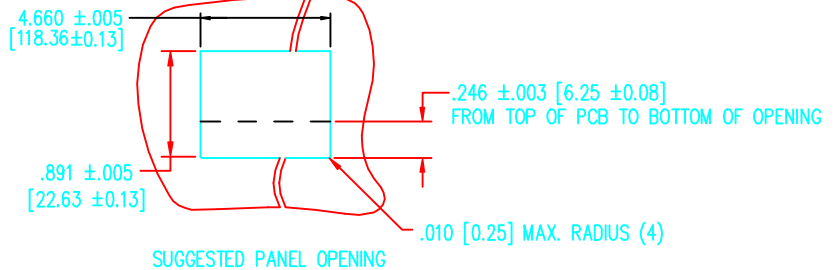
**FOR REFERENCE ONLY**



VIEW SHOWING MAX GROUNDING TAB DEFLECTION TO MIN. FACE PLATE OPENING

THE SUGGESTED PANEL OPENING IS INTENDED TO GIVE THE USER THE ABILITY TO HAVE REASONABLE JACK / PANEL CLEARANCES YET MAINTAIN RELIABLE GROUNDING CAPABILITY. THESE VARIABLES CAN BE ADJUSTED IN EITHER DIRECTION BUT MAY CARRY SOME CONSEQUENCES IN THE FORM OF LOWER MATING FORCES OR TIGHTER ASSEMBLY TOLERANCES. FORCE VALUES ON THE GRAPH ARE GENERAL AVERAGES TAKEN AT THE POINT OF CONTACT WITH FACE PLATE.

CONSULT FACTORY BEFORE ORDERING

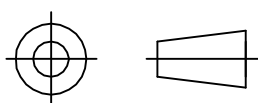


SUGGESTED PANEL OPENING

NOTES:

- TOLERANCES COMPLY WITH F.C.C. DIMENSION REQUIREMENTS.
- DIMENSIONS SHOWN ARE SUBJECT TO CHANGE WITHOUT NOTICE.

THIRD ANGLE PROJECTION



THIS DRAWING AND THE SUBJECT MATTER SHOWN THEREON ARE CONFIDENTIAL AND THE PROPRIETARY PROPERTY OF STEWART CONNECTOR SYSTEMS ("SCS") AND SHALL NOT BE REPRODUCED, COPIED OR USED IN ANY MANNER WITHOUT PRIOR WRITTEN CONSENT OF "SCS". THE SUBJECT MATTER MAY BE PATENTED OR A PATENT MAY BE PENDING. © SCS