

ATM 25.6 MBPS INTERFACE MODULE

960080A

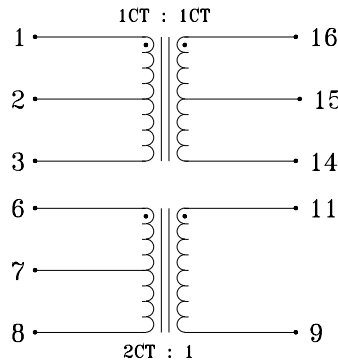
- Designed to meet ATM 25.6 PHY specifications
- Designed for use with Seeq 93C95 transceiver chipset
- For use with either 150 ohm (STP) or 100 ohm (UTP) cable
- Low profile, surface mount packaging, rated for 225°C peak IR reflow temperature
- 2000 Vrms isolation

ELECTRICALS AT 25°C

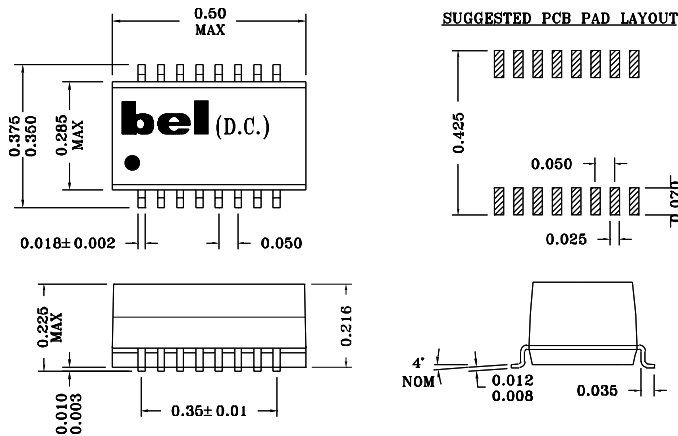
| Part No. | Insertion Loss (dB) Max | OCL (μH) Min | Leakage Inductance (μH) Max | Coupling Capacitance (pf) Max | DCR (ohms) Max |
|--------------|-------------------------|--------------|-----------------------------|-------------------------------|----------------|
| S553-1084-04 | 1.0 | 3000 | 4.0 | 30 | 1.0* |

*pins 6-8 is 2.0

SCHEMATIC



MECHANICAL

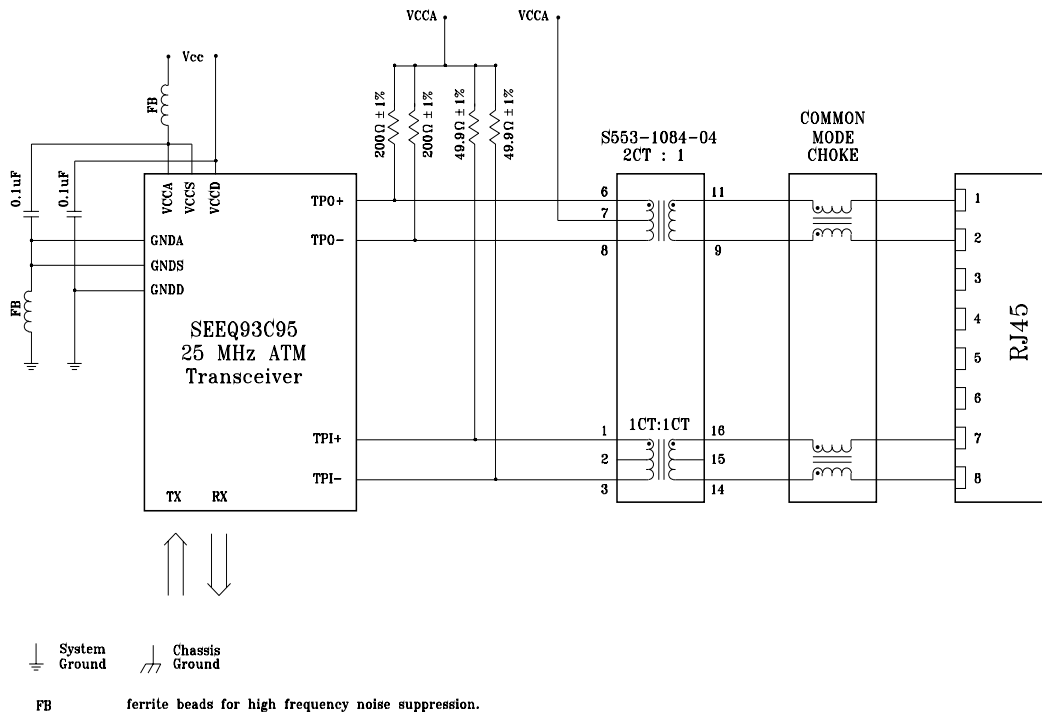


Specifications subject to change without notice.

ATM 25.6 MBPS INTERFACE MODULE

960080A

APPLICATION CIRCUIT



APPLICATION NOTES

- Bel has designed this product to operate in ATM 25.6 Mbps applications with transceivers that incorporate the required differential filtering using digital techniques within the silicon.
- Bel's low profile, surface mount packaging is ideal for high speed pick and place machinery. Parts can be shipped on tape and reel for high speed placement. Construction processes have been implemented for thermal compatibility with high temperature IR reflow assembly processing. Post dipping of leads assist with PC board solderability. Each part is optically inspected to meet rigid coplanarity requirements.

Corporate Office

Bel Fuse Inc.
198 Van Vorst Street, Jersey City, NJ 07302-4496
Tel: 201-432-0463
Fax: 201-432-9542
E-Mail: BelFuse@belfuse.com
Internet: <http://www.belfuse.com>

Far East Office

Bel Fuse Ltd.
8F/8 Luk Hop Street
San Po Kong
Kowloon, Hong Kong
Tel: 852-2328-5515
Fax: 852-2352-3706

European Office

Bel Fuse Europe Ltd.
Preston Technology Management Centre
Marsh Lane, Preston PR1 8UD
Lancashire, U.K.
Tel: 44-1772-556601
Fax: 44-1772-888366