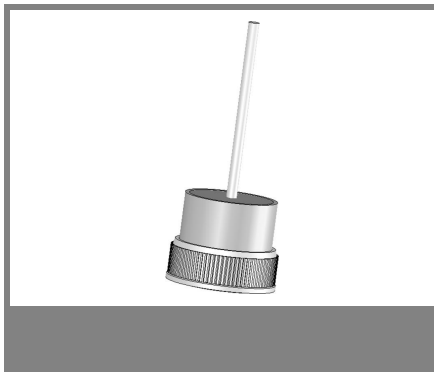


# BYP 60A05...BYP 60K6



Type	Wired to ANODE	Wired to CATHODE	Repetitive peak reverse voltage $V_{RRM}$ V	Surge peak reverse voltage $V_{RSM}$ V	Maximum forward voltage $T_j = 25\text{ }^\circ\text{C}$ $I_F = 60\text{ A}$ $V_F$ V
BYP 60	BYP 60A05	BYP 60K05	50	60	1,1
BYP 60	BYP 60A1	BYP 60K1	100	120	1,1
BYP 60	BYP 60A2	BYP 60K2	200	240	1,1
BYP 60	BYP 60A3	BYP 60K3	300	360	1,1
BYP 60	BYP 60A4	BYP 60K4	400	480	1,1
BYP 60	BYP 60A6	BYP 60K6	600	700	1,1

## Silicon Press-Fit-Diodes

### BYP 60A05...BYP 60K6

**Forward Current: 60 A**

**Reverse Voltage: 50 to 600 V**

Publish Data

### Features

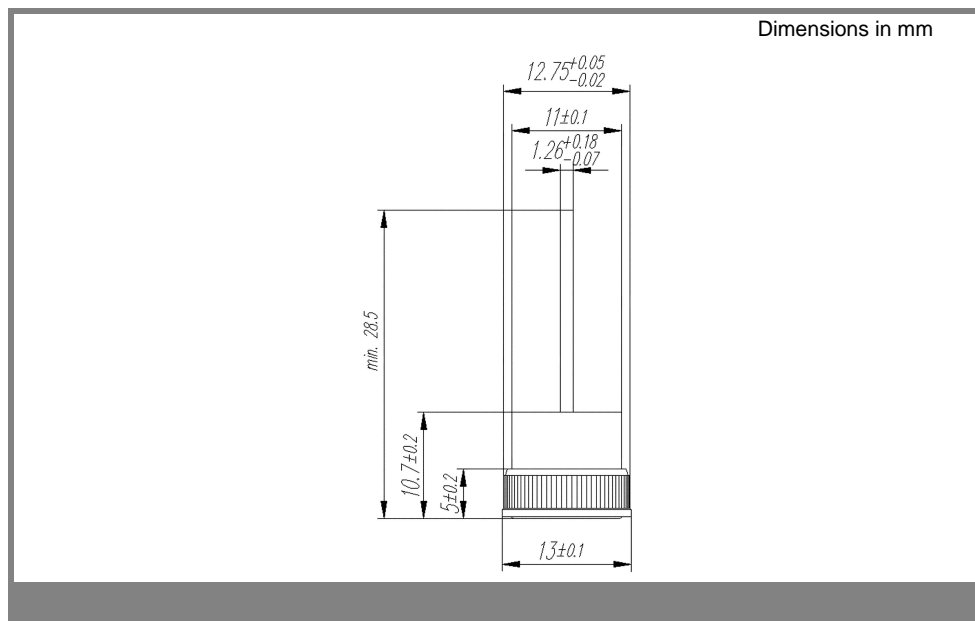
- max. solder temperature 260°C
- UL classification 94V-0
- Standard packaging: bulk

### Mechanical Data

- Weight approx. 10 g
- Terminals: plated terminals solderable per IEC 68-2-20
- Mounting position : any
- Metal press-fit case with plastic cover

Absolute Maximum Ratings		$T_c = 25\text{ }^\circ\text{C}$ , unless otherwise specified	
Symbol	Conditions	Values	Units
$I_{FAV}$	Max. averaged fwd. current, R-load, $T_c = 150\text{ }^\circ\text{C}$	60	A
$I_{FRM}$	Repetitive peak forward current $f > 15\text{ Hz}^{1)}$	120	A
$I_{FSM}$	Peak fwd. surge current 50 Hz half sinus-wave	450	A
$I^2t$	Rating for fusing, $t < 10\text{ ms}$	1000	A <sup>2</sup> s
$R_{thA}$	Thermal resistance junction to case	0,6	K/W
$T_j$	Operating junction temperature	- 50 ... + 215	°C
$T_s$	Storage temperature	- 50 ... + 215	°C

Characteristics		$T_c = 25\text{ }^\circ\text{C}$ , unless otherwise specified	
Symbol	Conditions	Values	Units
$I_R$	Maximum leakage current, $T_A 25\text{ }^\circ\text{C}$ ; $V_R = V_{RRM}$	100	$\mu\text{A}$



# BYP 60A05...BYP 60K6

