

VHF POWER MOSFET

N-Channel Enhancement Mode

DESCRIPTION:

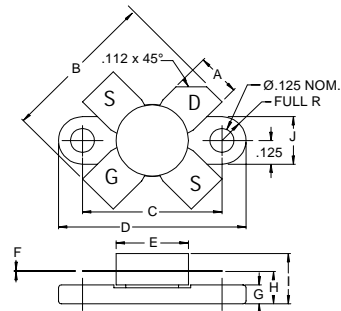
The **ASI BLF145** is Designed for General Purpose Class AB Power Amplifier Applications up to 175 MHz.

FEATURES:

- $P_G = 20$ dB Typ. at 30 W /28 MHz
- **Omnigold™** Metalization System

MAXIMUM RATINGS

I_D	3.0 A
$V_{(BR)DSS}$	65 V
V_{GSS}	20 V
P_{DISS}	68 W @ $T_C = 25^\circ\text{C}$
T_J	-65 °C to +200 °C
T_{STG}	-65 °C to +150 °C
θ_{JC}	2.6 °C/W

PACKAGE STYLE .380 4L FLG


DIM	MINIMUM inches / mm	MAXIMUM inches / mm
A	.220 / 5.59	.230 / 5.84
B	.785 / 19.94	
C	.720 / 18.29	.730 / 18.54
D	.970 / 24.64	.980 / 24.89
E		.385 / 9.78
F	.004 / 0.10	.006 / 0.15
G	.085 / 2.16	.105 / 2.67
H	.160 / 4.06	.180 / 4.57
I		.280 / 7.11
J	.240 / 6.10	.255 / 6.48

CHARACTERISTICS $T_C = 25^\circ\text{C}$

SYMBOL	TEST CONDITIONS		MINIMUM	TYPICAL	MAXIMUM	UNITS
$V_{(BR)DSS}$	$V_{GS} = 0$ V	$I_{DS} = 10$ mA	65	---	---	V
I_{DSS}	$V_{DS} = 28$ V	$V_{GS} = 0$ V	---	---	2.0	mA
I_{GSS}	$V_{DS} = 0$ V	$V_{GS} = 20$ V	---	---	1.0	μA
V_{GS}	$V_{DS} = 10$ V	$I_D = 10$ mA	2.0	---	4.5	V
$V_{GS1}-V_{GS2}$	$V_{DS} = 10$ V	$I_D = 10$ mA			100	mV
G_{FS}	$V_{DS} = 10$ V	$I_D = 1.5$ A	1.2	---	---	S
C_{iss}	$V_{GS} = 28$ V	$V_{DS} = 0$ V	$f = 1.0$ MHz	125		pF
C_{oss}				75		
C_{rss}				11		
P_G	$V_{DD} = 28$	$P_{OUT} = 30$ W	$f = 28$ MHz	20		dB
η_D				40		%