

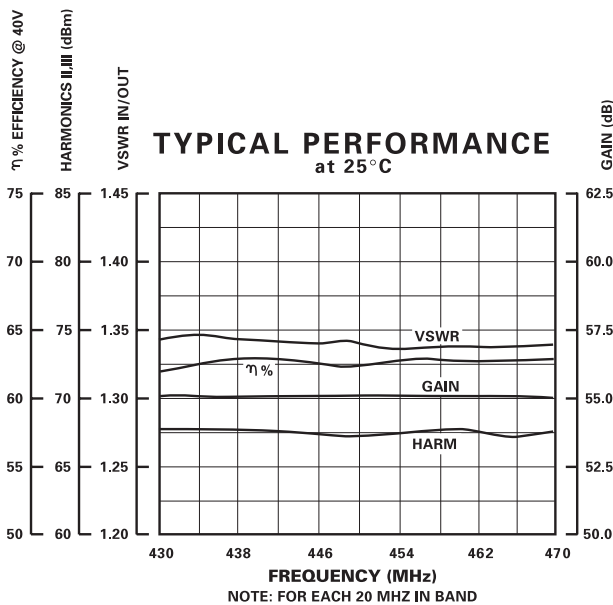
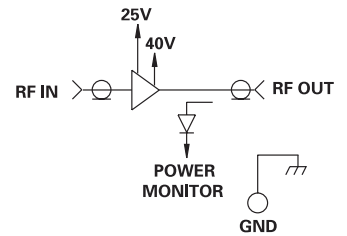
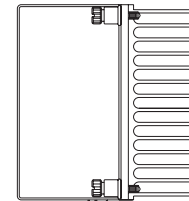
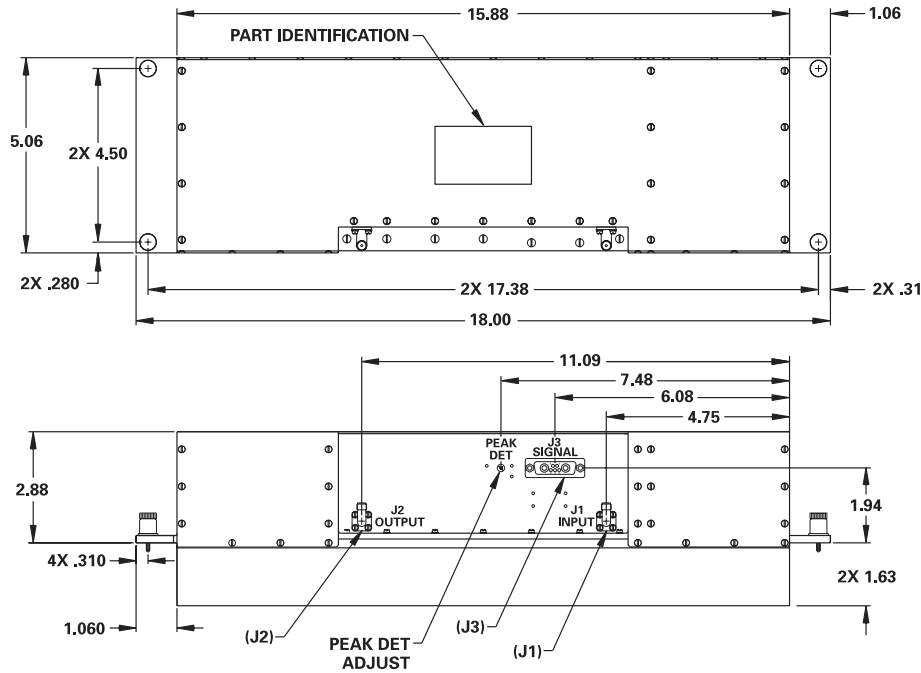
MODEL NUMBER CAM09121

UHF High Power Amplifier (Driver)

FEATURES

- 430-470 MHz
- Power Out +57.8 dBm
- Gain 55 dB
- Efficiently 62% at 40V
- Duty Cycle 15%

AMP



GUARANTEED PERFORMANCE

| Parameter | Min | Typ | Max | Units | Conditions |
|-----------------------------|-------|-------|------|-------|------------------------------------|
| Operating Frequency | 430 | | 470 | MHz | Select 20 MHz in Band |
| RF Power | | | | | |
| <i>Output</i> | +57.6 | +57.8 | | dBm | |
| <i>at 1 dB Compression</i> | | | | | |
| Gain | 54.5 | 55 | | dB | Gain can be Adjusted to 60 dB Min. |
| VSWR In/Out | | 1.3 | 1.4 | | |
| Harmonics | | 65 | | dBc | |
| | | 65 | | dBc | |
| Amplitude Tracking | | ±0.2 | ±0.3 | dB | Between Units |
| Phase Tracking | | ±1.5 | ±2 | DEG | Between Units |
| Impedance | | 50 | | OHMS | |
| Duty Cycle | | | 15 | % | |
| Pulse Droop | | | 0.05 | dB | |
| Transition (Rise/Fall) Time | | 80 | | nSec | |
| DC Current | | | 4 | Amp | At +40 VDC Supply |
| | | | 2.7 | Amp | At +25 VDC Supply |
| Operating Temperature | -20 | +25 | +65 | °C | TA |