

Designing Energy Meters with the PIC16F873A

Author: Sandip Chattopadhyay
Microchip Technology Inc.

INTRODUCTION

The deployment of electronic energy meters has gained a great deal of momentum over the past several years. This is due to their two main advantages over the traditional electromechanical designs: improved accuracy and an expanded set of features. Current microcontroller technology allows designers to build meters that are competitive in price with traditional devices, while maintaining the required IEC 1036 Class 1 accuracy of $\pm 1\%$ for domestic applications. Microcontrollers also allow the easy incorporation of added features, such as rms voltage and current and peak demand metering, as local electric utility companies desire to implement them.

In this application note, we will discuss the implementation of a basic watthour meter using PICmicro[®] Flash microcontrollers. In the process, we will show how one ADC with a single sample-and-hold circuit can effectively measure both voltage and load current and maintain Class 1 accuracy. The firmware discussed measures and displays rms voltage and current, as well as kWh, presented in a clear digital format on an LCD.

Besides basic energy measurement, this design also includes features that many electric utilities are very interested in rolling out on a wider basis. Dual-channel measurement provides a simple method for monitoring for tamper conditions. An on-board RTC provides a time source for calculating and tracking current and historical peak demand. All metered data is securely stored as it is updated in nonvolatile memory.

The design discussed here uses the PIC16F873A and two Current Transformers (CTs) for current sensing. It can be implemented just as easily with the pin compatible PIC18F2320. Current measurement using a shunt may also be used in this design, with little or no change to the current amplifier design.

PRINCIPLES OF MEASUREMENT

Basically, a watthour meter is designed to measure energy or power consumed over time. In simple terms, electrical power is the product of voltage and current. If we make repeated measurements of both instantaneous voltage and current, or V_i and I_i , we can keep a running total of their products over time. By dividing the total accumulated energy over the number of samples, we have the average power (the first expression in Equation 1). Multiplying the average power by time gives the total energy consumed.

EQUATION 1: CALCULATING AVERAGE ENERGY AND CONSUMED POWER

$$\text{Average Power (watts)} = \frac{\left(\sum_{k=1}^N V_{i_k} \cdot I_{i_k} \right)}{N}$$

$$\text{Energy Consumed (wattseconds)} = \frac{\left(\sum_{k=1}^N V_{i_k} \cdot I_{i_k} \right)}{F_s}$$

For alternating current, such as that from the mains, average power also must account for *power factor*, which is the phase relationship between voltage and current. In simple terms, average AC power is $V I \cos\theta$, where V and I are average rms voltage and current, and θ is the phase angle between the two. Instantaneous sampling does not directly use power factor; the value of the phase angle is essentially embedded in the instantaneous current measurement. Recovering the actual phase angle for the purpose of calculating and displaying the power factor can be done separately and is very calculation intensive. If we are just measuring energy consumption, it is not necessary.

To get an accurate picture of power consumption for an AC system, we need to make frequent measurements, preferably many times that of the supply frequency. In this application, we use a sampling rate of 400 Hz, which provides 8 samples per full cycle of the line frequency (for AC supply frequency of 50 Hz). For a sampling rate F_s , we get N samples in N/F_s seconds. By multiplying this expression for time by average power, we obtain an expression for energy consumed in terms of wattseconds (the second expression in Equation 1). From here, we can use simple math to calculate kilowatt-hours.

Of course, it is difficult for a microcontroller to make direct measurements when the supply voltage is coming straight off the mains: say, 230V at up to 50A. This makes it necessary to indirectly measure line voltage and current at a level consistent with a microcontroller, then rescale these measurements to arrive at the original value. The best way to do this is to reduce the voltage to a level and dynamic range that is compatible with digital circuitry. (Measuring current here is essentially the same as measuring voltage, in that we will use a transducer that generates a voltage proportional to the load current.) The actual voltage and current readings can then be derived.

For this application, the derived voltage reading, V_d , is related to the actual instantaneous line voltage V_i by the expression, $V_d = V_i K_d / K_v$ or $V_i = V_d K_v / K_d$, where K_d is the digitization constant for the ADC in this application and K_v is the voltage proportionality constant for the circuit design. For this particular application, K_d is 204.6, the digital value from the ADC that represents 1V. K_v is the factor by which the input line voltage is reduced by a voltage divider; in our design, it is 300.

Similarly, the derived current reading, I_d , is related to I_i by the expression, $I_d = I_i K_d / K_i$ or $I_i = I_d K_i / K_d$, where K_i is the current proportionality constant specific to this design; it is calculated by dividing the CT turn ratio by the product of the current amplifier gain and the input burden resistance. For this application, based on a 5000-turn CT, the value of K_i works out to be approximately 8.7. K_d is the same as before.

Note: The calculation of K_i when using a shunt is somewhat different. The actual circuit design for current measurement, and the design considerations for using a shunt, are discussed in more detail in “**Hardware Design**”, starting on page 10.

By substituting the attenuated values of V_d and I_d for the V_i and I_i in the original power measurement equation, we get an expression that relates the consumed power directly to the indirect voltage and current measurements, as shown in Equation 2.

EQUATION 2: CALCULATING CONSUMED ENERGY FROM INDIRECT MEASUREMENTS

$$\text{Energy Consumed (wattseconds)} = \frac{\left(\sum_{k=1}^N V_{d_k} \cdot I_{d_k} \right) \cdot (K_v \cdot K_i)}{F_s \cdot K_d^2}$$

We could accumulate a running total indefinitely and directly interpret it for energy consumed over time. However, it's more practical to accumulate up to some fixed amount, then increment a counter to indicate energy consumption. For our application, we will accumulate 10 Wh (0.01 kWh) before incrementing the counter. This value represents the resolution limit of the meter. It is equivalent to 36,000 wattseconds (10 Wh x 60 x 60); this means that we increment the counter every time that the right side of Equation 2 reaches 36,000.

We can also rearrange Equation 2 to define the power consumed entirely in terms of V_d and I_d . Since we have already defined F_s , K_v , K_i and K_d in constant terms, we can give the whole quotient on the right side of the equation a constant value, D (Equation 3).

EQUATION 3: REDEFINING POWER IN TERMS OF V_d AND I_d ONLY

When 0.01 kWh is consumed:

$$\sum_{k=1}^N V_{d_k} \cdot I_{d_k} = \frac{3600 \cdot F_s \cdot K_d^2}{K_v \cdot K_i} = D$$

In simple terms, any time that the accumulated sum of the voltage and current products equals or exceeds D , we increment the kWh counter. We also save any remainder in excess of D to be used in the next round of accumulation.

Note that anything which might influence the value of the constants may also affect the value of D and requires changes to the amplifier design. This includes the use of a shunt instead of a CT, or even changing the CT turn ratio, both of which may change K_i .

Sampling Voltage and Current

Calculating power assumes that the voltage and current are sampled exactly the same time. Obviously, using a single ADC with one sample-and-hold circuit makes this impossible. We can do the next best thing, however, by using an interpolated voltage value that very closely approximates what the voltage would be when the current is sampled. The principle is graphically represented in Figure 1. Although current is shown here as a regular sine wave and in phase with voltage, this is not a requirement; current can have any waveform and phase relationship.

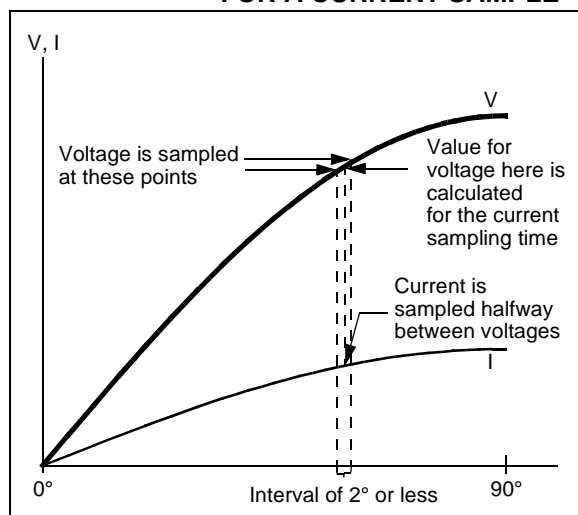
In this method, we assume that it takes some time t to sample an analog voltage and convert it to a digital value. If t is sufficiently small, we can use linear approximation to calculate the value exactly in the middle of an interval of $2t$. We will work on the assumption that a segment of sine curve spanning 2° can be thought of as linear. For AC power in many countries, the frequency is 50 Hz; 2° represents an interval of about 111 μs . If we assume a practical conversion time of 35 μs , the time between voltage measurements would be 70 μs . This is about 1.26° , well within our margin for linearity.

To calculate the voltage for a particular current measurement:

1. Measure the first voltage sample at time $t0$.
2. After an interval of t , measure the current (time $t1$).
3. After another interval of t , measure the voltage again (time $t2$).
4. Calculate the voltage at $t1$ as $(V_{dt0} + V_{dt2})/2$.

The actual shape of the current waveform does not affect this calculation.

FIGURE 1: INTERPOLATING VOLTAGE FOR A CURRENT SAMPLE



Calibration

To compensate for errors introduced by passive components, we need to individually calibrate the meter. We will discuss two varieties here:

- **Gain calibration**, to compensate for gain errors (in K_v and K_i) introduced by normal variations in the values of different resistors, CT ratios and so on.
- **Phase calibration**, to compensate for extraneous phase shifts introduced by the current measurement technique (from the CT, from the small but unwelcome inductance generated by a shunt and so on).

GAIN ERROR CALIBRATION

In theory, the proportionality and digitization constants should adequately calibrate the meter. In practice, individual component variations may cause differences between calculated and actual energy consumption. To account for this, we introduce a gain calibration factor, C_g , to Equation 3. This constant acts to adjust for changes in both K_v and K_i . The accumulated voltage/current sum is then compared to D , also adjusted by the calibration constant C (Equation 4). In theory, C and C_g are the same value. For practical applications, the two constants will have different values to reflect the actual calibration. This is discussed in more detail in “**Firmware**” (page 5).

The value of K_i may also be slightly different at the extremes of the current measurement range. To account for this, we need two different gain calibration constants: one for the low end of the dynamic range and one for the upper end. In practice, this is done for each current measurement channel, for a total of four different values of C_g . The meter firmware chooses the appropriate value to use when a measurement is taken.

EQUATION 4: GAIN CALIBRATION CONSTANT

$$C_g \cdot \sum_{k=1}^N V_{d_k} \cdot I_{d_k} = C \cdot D$$

AN939

PHASE ERROR CALIBRATION

Ideally, the relative size of measurement error should be fairly constant at various PFs, assuming that there is no phase error. In reality, the CTs introduce a small phase error that is generally constant in the amount of current lead or lag they create. The relative size of the measurement error can vary significantly with the power factor, however. If we calculate the percentage of error as $((\cos\theta) - \text{PF})/\text{PF} \times 100$, where θ is the angular difference between the theoretical phase difference and the error introduced by the CT, we can see that measurement error from a constant phase error is much greater at a 0.5 PF (lag) than at UPF.

To show this, assume that a CT introduces a constant phase error of about 1° , regardless of the power factor. At UPF, the error is extremely small, on the order of -0.015% $((\cos(1^\circ) - 1.0)/1.0)$. At 0.5 PF with a 60° lag, however, the error is significantly larger; as high as $+3\%$ $((\cos(60^\circ - 1^\circ) - 0.5)/0.5)$. This is illustrated in Figure 2.

To correct for this type of error, we can individually measure error at UPF and 0.5 PF to come up with a typical error for the entire range; this can be converted back to a fixed angular phase error and corrected by altering the time between the current sample and the next voltage sample.

As an example, assume that a meter is found to have an error of $+0.2\%$ at UPF and $+0.7\%$ at 0.5 PF (current lag). The difference between the errors is $+0.5\%$. From our previous equation, the angle x of the phase error at 0.5 PF would be:

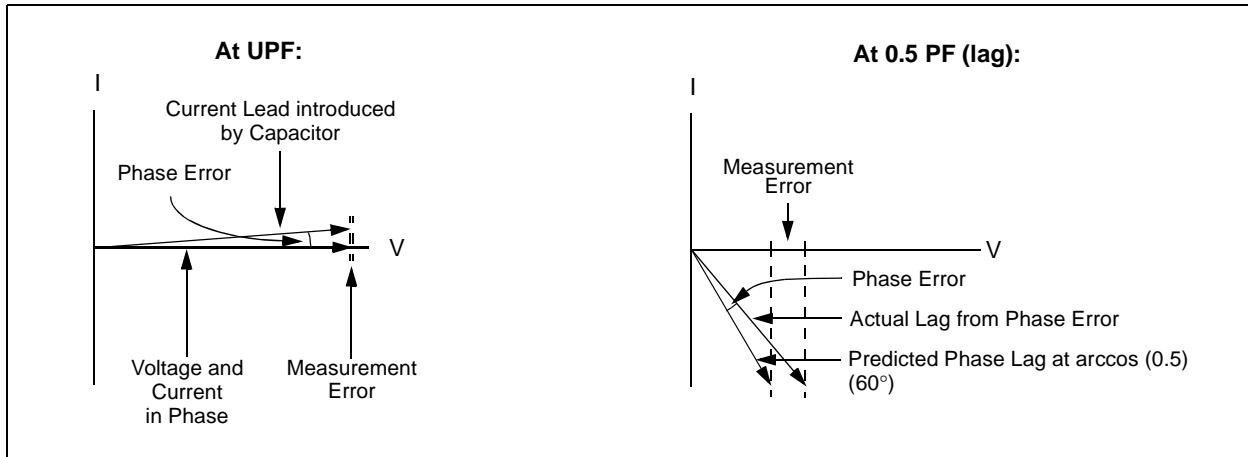
$$\begin{aligned} (\cos(x) - 0.5)/0.5 &= 0.005 \\ \cos(x) &= 0.5025 \end{aligned}$$

or x is approximately 59.83° . This requires an additional lead of 0.17° to get to the desired phase angle of 60° , which translates to approximately $10 \mu\text{s}$ for a 50 Hz waveform. In practical terms, this means delaying the voltage measurement at t_2 by $10 \mu\text{s}$. If we assume that the time between individual conversions is $35 \mu\text{s}$, this means that t_2 is actually sampled at $45 \mu\text{s}$.

Note: If errors at UPF and 0.5 PF are equal in magnitude, phase error correction is not necessary.

Using a CT by itself normally introduces a current lag, typically observed at between 2° to 3° . Introducing a capacitor across the CT, as was done in this design, provides a current lead that is correctable with timing adjustment. It is not necessary to quantify the amount of lead; as long as it is present, it can be measured indirectly through meter error and compensated.

FIGURE 2: COMPARING MEASUREMENT ERRORS FOR A CONSTANT PHASE ERROR AT DIFFERENT POWER FACTORS



FIRMWARE

A high-level overview of the energy metering firmware is shown in Figures 3 through 6.

Before entering the main metering routine, the firmware initializes itself. Measurement buffers and Fault flags are cleared and the timers for the measurement routines are reset. If a calibration signal is present (done by setting a jumper), the firmware waits for calibration data on the serial port. If the signal is absent or no data is received, the data EEPROM is interrogated for a calibration flag. If this flag is set, the calibration data stored there is loaded for the firmware's use. If no calibration data is present, default values in the firmware are used instead.

Initialization also gives users the opportunity to perform a calibration routine, which downloads data from an external meter calibration utility through a serial connection. Details are provided in “**Calibrating the Meter**” (page 11).

The main loop is responsible for updating the kWh counter and maintaining the visual display shown on the LCD. The kWh counter is incremented on the basis of a status flag, set in an interrupt driven power measurement routine, discussed below. A separate display timer is used to determine how long each measured value is displayed before rolling over to the next value. The default value for this application is 6.26s.

An interrupt signal from an external RTC causes the firmware to compare the total energy consumed since the last interrupt to the value stored in data EEPROM and update the value if the consumed power is greater. This provides a record for tracking peak demand for one month. The default value for the interval is 30 minutes.

Voltage and current measurement are performed during an interrupt service routine triggered by the Timer0 interrupt. Measurements are performed in a specific sequence, with the entire sequence being repeated every 2.5 ms. The measurement routine is an Interrupt Service Routine triggered by the Timer0 interrupt. Interleaving samples of voltage and current are taken, with the simultaneous voltage values for the current measurements being interpolated by the application. Calibrations for phase error are included in this calculation by using a delay counter to adjust the voltage readings; in this application, each increment of the counter delays the voltage reading by 1.4 μ s (assuming a 20 MHz clock). The entire sequence of five measurements and their corresponding conversions takes much less time than the interval between sequences, typically less than 300 μ s.

To provide an added measure of accuracy, the offset voltage is periodically monitored to check for a stable baseline. This is done much less frequently than other measurements, approximately once every 1.25 seconds. Adjustments to the offset value, subtracted from voltage and current measurements, are made as needed.

A single sampling sequence is taken during every interrupt routine. The accumulated energy to that point, adjusted by C_g , is compared with the values for $D \times C$, as well as a fraction of the $D \times C$ equivalent to 1/3200 kWh. Prior to calibration, the application uses a value of 200 for both C and C_g . After calibration, C_g may change to compensate for gain inaccuracies; C remains at 200. An increment or decrement of one in C_g can be used to compensate for a deviation of $\pm 0.5\%$. Increasing C_g compensates for negative deviations, while decreasing it compensates for positive deviations. In practical terms, the adjustment range possible runs from -25 to +100%.

If the accumulated value exceeds 1/3200 kWh, an external signal is generated for calibration purposes. If the energy equals or exceeds the adjusted value of D , the kWh flag is set; this will cause the kWh counter to be incremented by one during the next execution of the main loop. For amounts exceeding D , the difference between the energy buffer and D is saved and added to the next round of accumulation.

The ISR executes a housekeeping routine once every 20 interrupts to monitor for other conditions that may affect the energy reading. These include current channel amplifier gain, ground Faults, negative accumulated value and noise.

Because of the large dynamic range for load current, a selectable gain amplifier is used to match the current range to the range of the ADC. The gain is controlled by summing the current for 2½ cycles of the supply frequency. If the value exceeds an equivalent of 3A, the amplifier's gain is switched to low. If the value falls below an equivalent of 2.8A, the gain is switched to high. The small overlap between switching thresholds provides a built-in hysteresis, which prevents constant switching between gain states.

The same summed values are also compared for differences. If the line current exceeds the neutral current by 8% or more, a ground Fault is indicated. When this happens, the meter switches from metering on the neutral current (the default) to the line current. An external signal is also sent to indicate a possible tamper condition.

Also included in the measurement routine is logic to handle reverse-current conditions. Although the energy calculations involve signed operations, the result of the calculation after 2½ cycles should always be positive. This assumes that the current sensors are connected to produce voltage and current signals in phase (or nearly so) at Unity Power Factor (UPF). If this is properly done, the accumulated energy will always be positive, even across a PF range from 0.5 lag to 0.8 lead. Nevertheless, a reverse-current condition, where voltage and current are 180° out of phase, will still produce a negative accumulated energy result. If this happens, a flag is set to permit the energy algorithm to produce a correct (positive) result from the next cycle onward.

AN939

The algorithm also examines the contents of the intermediate results buffers and clears them if the values fall below a certain value. This prevents line and circuit noise from being mistakenly interpreted as actual power consumption.

FIGURE 3: ENERGY METER FIRMWARE (INITIALIZATION ROUTINE)

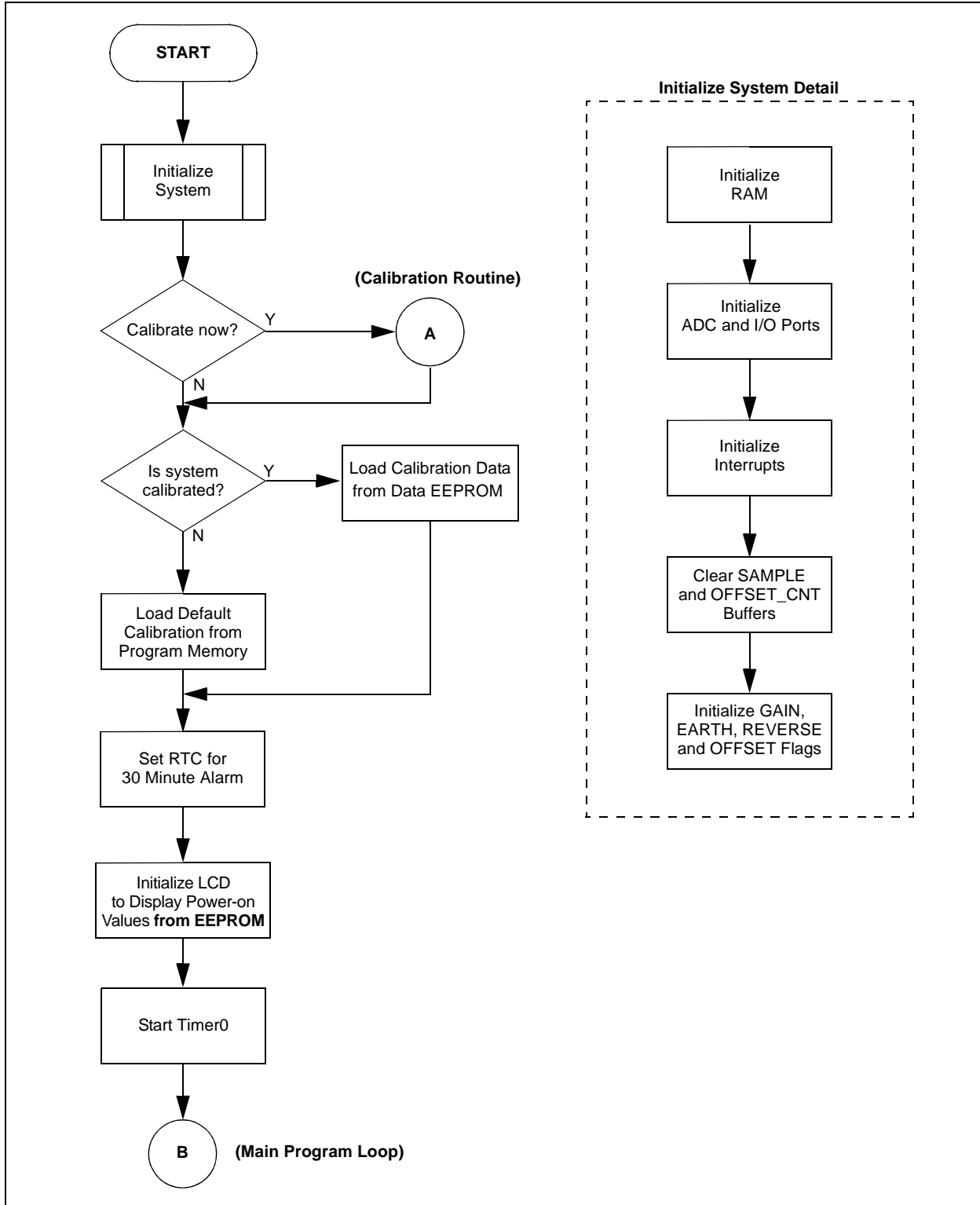


FIGURE 4: ENERGY METER FIRMWARE (MAIN PROGRAM LOOP AND CALIBRATION ROUTINE)

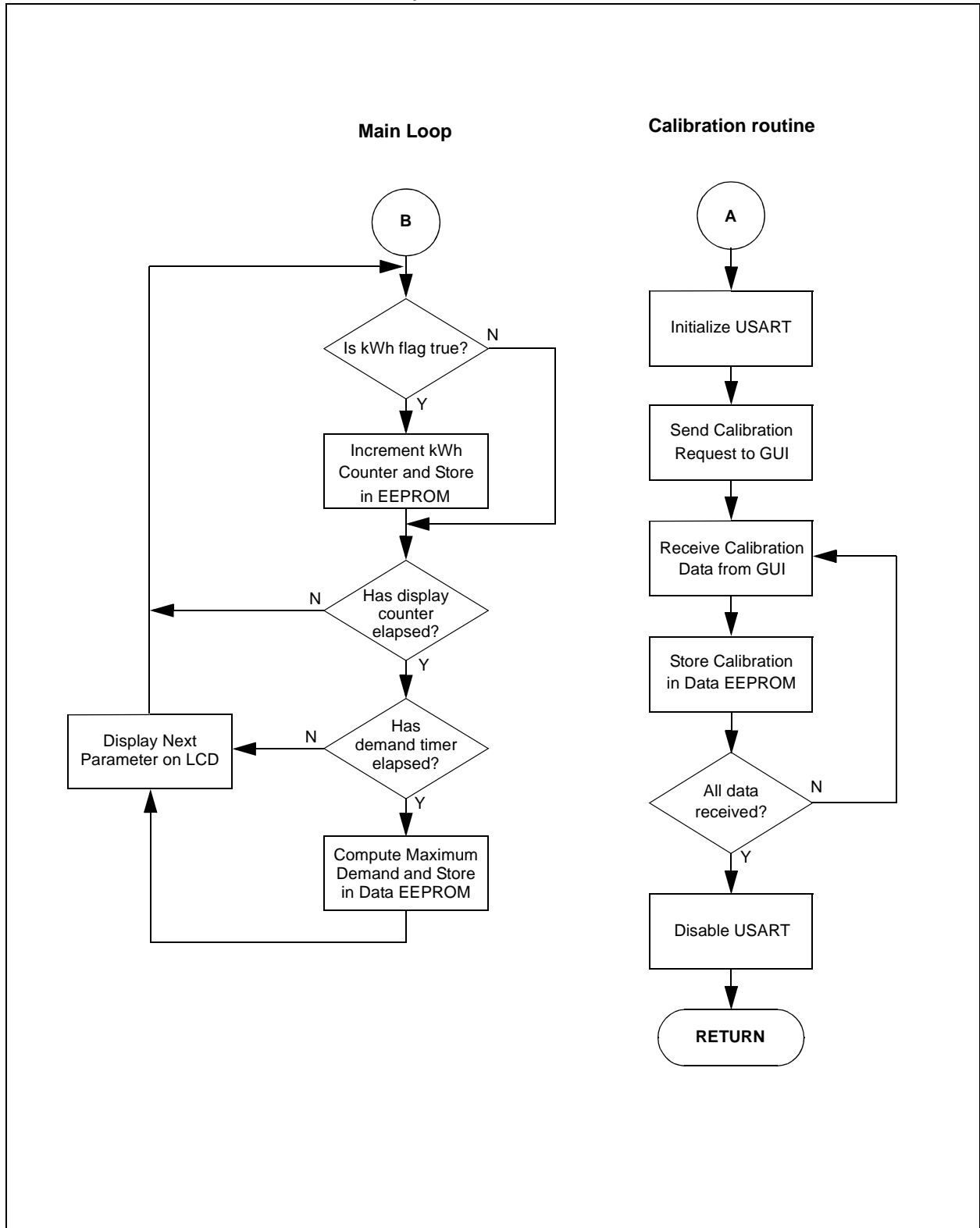


FIGURE 5: ENERGY METER FIRMWARE (ENERGY MEASUREMENT INTERRUPT ROUTINE)

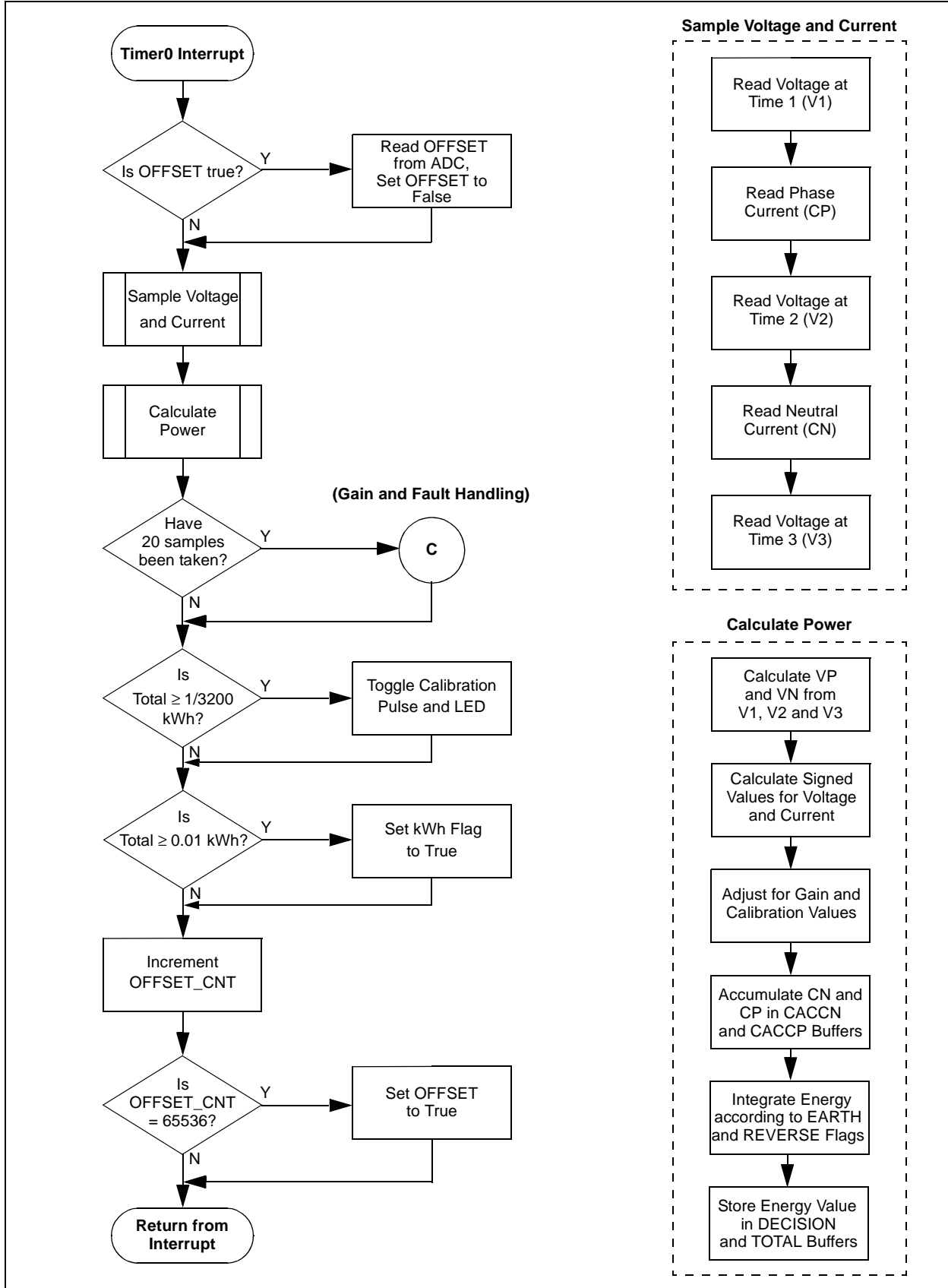
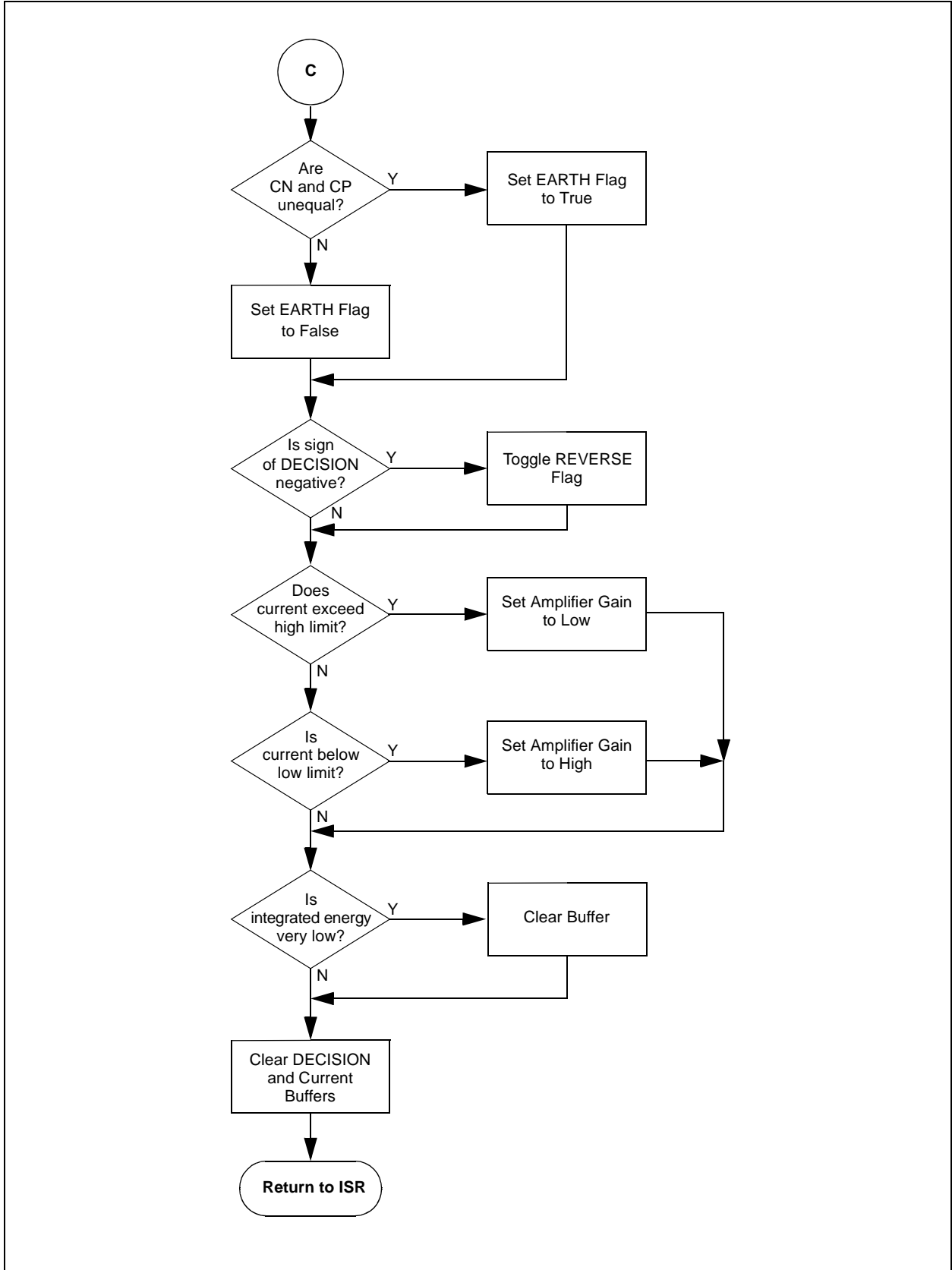


FIGURE 6: ENERGY METER FIRMWARE (GAIN AND FAULT HANDLING ROUTINE)



HARDWARE DESIGN

The conceptual design for the energy meter is shown in Figure 7; a more detailed schematic is presented in **Appendix A: "Schematics"**. As previously noted, this design was prototyped using the PIC16F873A. Users may also implement this design without modification using the pin-compatible PIC18F2320, if desired.

Line voltage and current are sampled sequentially at regular intervals, with voltage and current being presented to different analog input channels. To measure voltage, the AC line is sampled across a potential divider, R19 and R20, which divides the input voltage by about 300. For current measurement, two current transformers create voltage signals across burden resistors (R8 and R9) that are proportional to the load current. As the core design of the energy meter will accommodate different types of transducers, the CTs themselves are not shown on the schematic.

Regardless of the sensor used, current is measured sequentially on both line and neutral, alternating with voltage measurements. Measuring both currents is necessary for detecting ground Faults and error conditions. An analog switch selects between the appropriate channels and ground.

A fixed offset of approximately 2V is added to both the current and voltage signals. This maintains the signal well above V_{SS}, which is an operating requirement of the microcontroller's ADC.

By itself, the ADC does not have the dynamic range or resolution to perform the necessary measurements. For the current signal, an amplifier with two selectable gain stages follows the analog switches; it is used to compensate for the wider dynamic range of the current sample. The application firmware senses if the amplified current signal is above or below the ADC's capabilities and automatically adjusts the gain accordingly. Single stage

gain is set by the values of R5, R6 and R7; together with the turn ratio of the CT and the value of the burden resistors, these determine the value of the current proportionality constant, K_i . (For reference, the formula is $K_i = ((CT \text{ Ratio})((R5 + R6)/R7))/(R8 \text{ or } R9)$.) The microcontroller controls the amplifier gain through an analog switch.

Energy consumption is calculated as previously described in the "Firmware" section. Whenever the energy is incremented by ten counts (i.e., 0.1 kWh), the value is also stored in EEPROM as well. In the event of a power failure and subsequent recovery, the previously accumulated energy is retrieved and accumulation resumes from that value.

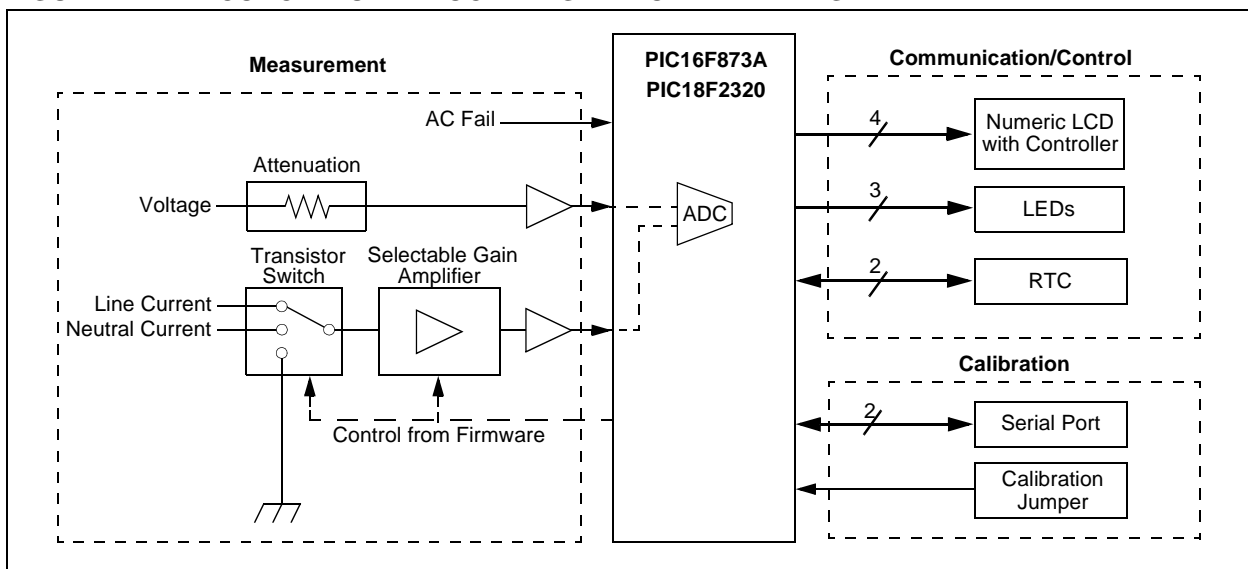
An external Real-Time Clock (RTC) is used to generate an interrupt signal every 30 minutes. This is the external timing source for peak demand period calculations discussed previously. The RTC can also be used to implement other time/date functions.

Information on energy consumption is sent over a 4-wire interface to an external LCD with integrated controller. The current version of the application firmware displays cumulative energy use to date, as well as several other parameters, in a continuous rollover fashion.

Four indicator LEDs are provided to indicate Fault and calibration states. The kWh LED flashes each time that 1/3200 kWh (0.3125 Wh) is consumed, producing an optical signal that test equipment can use for meter calibration. The other LEDs indicate normal operation, reverse-current operation and ground Fault (tamper) conditions.

The core hardware design also includes a serial (RS-232) interface for calibration. The data lines are electrically isolated from the rest of the meter circuitry to reduce the risk of damage to external equipment.

FIGURE 7: CONCEPTUAL BLOCK DIAGRAM OF THE ENERGY METER



Design Considerations with Shunt Measurement

When substituting a shunt for current measurement, the value of K_i is calculated as the reciprocal of the product of the shunt resistance and the amplifier gain. For example, a shunt of 0.005 ohm used with the same amplifier circuit will also produce approximately the same value of K_i (around 9.3).

However, IEC specifications call for a power loss of less than 2W in the measurement circuit. At the design voltage and current, this would mean using a shunt smaller than 0.0001 ohm. To compensate, the amplifier gain would have to be increased by reducing R7, which would create different gain requirements for the CT and shunt circuits. Since a single amplifier is used for both current channels, combining shunt and CT measurement may not be possible in this design.

Tamper Proofing and Current Measurement

As already noted, the energy meter design measures both the phase and neutral currents. Measuring two current channels allows for tamper Fault detection. If tampering is indicated, the meter will automatically measure and calculate usage from the leg with the higher load current. The threshold for detection is set in the firmware at an 8% difference between the two channels.

It is possible to configure the meter to use only one CT and a single current measurement channel. Doing this will disable tamper detection. Provisions are made in the firmware to bypass the tamper detection feature.

If a shunt is used for current measurement, only one current measurement channel is available. As before, doing this disables tamper protection.

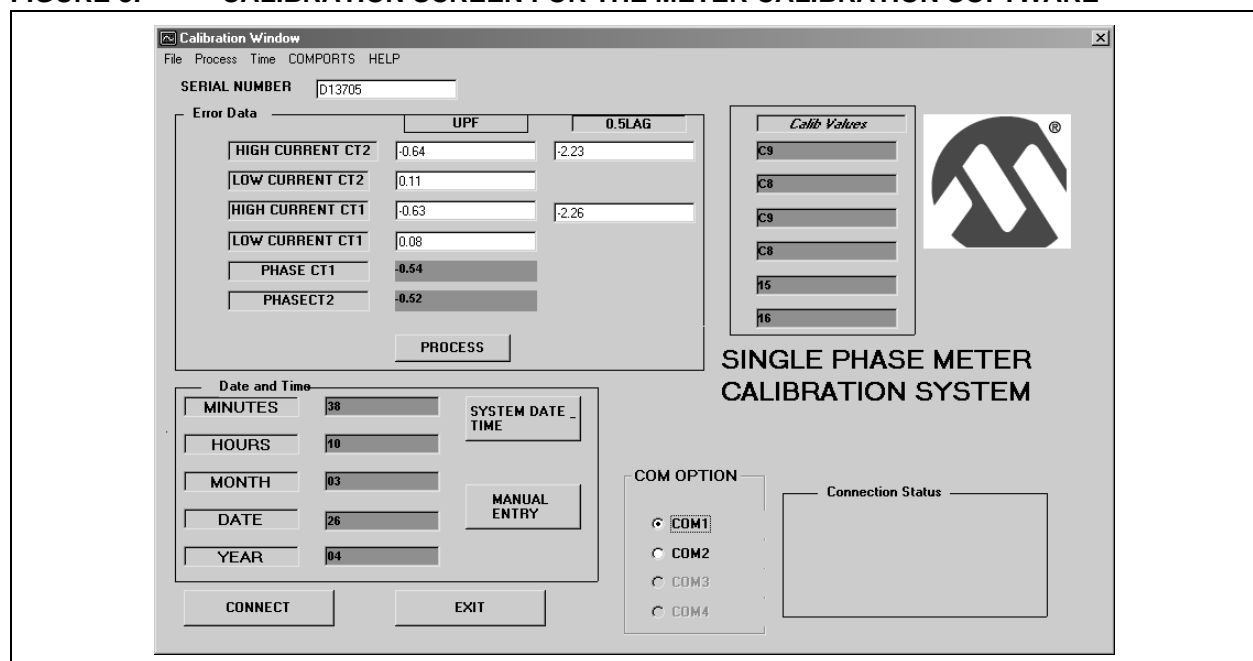
CALIBRATING THE METER

The firmware contains a default set of values for the meter calibration constants. These values assume the use of CTs to measure current and are based on the prototype design. Using different current sensors (shunts or Hall sensors), in addition to component variations in individual devices, may require individual meter calibration to account for intolerance variations and phase error from sensors. To perform calibration, it will be necessary to use the Meter Calibration Software provided with the firmware. Users must also have access to a watt-hour meter test stand, or other system that can provide power at fixed current levels and power factors.

The calibration software uses inputs provided by the user to calculate the gain calibration constant, K_i , for both current channels, for both low-gain and high-gain settings of the current amplifier. In addition, it calculates the phase error and required timing correction from the same inputs. The calibration data is then downloaded to the meter through a serial (RS-232) interface.

The software is designed to run on desktop or laptop computers under any 32-bit version of Microsoft® Windows® operating system. The computer must also have an available serial port.

FIGURE 8: CALIBRATION SCREEN FOR THE METER CALIBRATION SOFTWARE



To calibrate the meter:

1. Connect the meter to a test stand or other system, following the equipment manufacturer's directions.
2. Measure and record the signed error between the meter and the test equipment on both current channels (CT1 and CT2) for each of these parameters:
 - 1A supply at UPF
 - 10A supply at UPF
 - 10A supply at a power factor with 0.5 lag (60 degree current lag)
3. Launch the Meter Calibration Software. At the main screen, click on **Calibration**. The Calibration window appears (Figure 8).
4. Enter the six error measurements in the places indicated. Click on the **Process** button. The software will automatically calculate and display the proper calibration values. At this point, you should also set the meter serial number and date and time to be downloaded, as well as the serial port to be used.
5. Disconnect the meter from the test stand. Connect it to a power source and to the computer using a standard DB9 serial cable.

Note: While the meter's serial data port is isolated from the rest of the meter circuitry, the meter ground is not. This poses a potential risk to the computer and the user. When performing any calibration, always run the computer on a power source that does not share a ground with the meter. The best option is to run the computer from a battery.

6. Place a jumper across JP1 to enable calibration.
7. Click on the **Connect** button. The software automatically connects to the meter, which downloads the calibration data and stores it in data EEPROM. The progress of the data connection and download is displayed in the lower right-hand corner of the window. When complete, the software displays "Calibration Complete".
8. Remove the calibration jumper. Disconnect the serial cable.

RESOURCE USAGE

Although the energy meter design provides both basic and additional special features, other features may be required by a particular customer. This implementation provides additional room, both in terms of memory and hardware resources, to expand the application to the customer's needs. A summary of the resources used for the basic PIC16F873A device-based design is provided in Table 1.

TABLE 1: RESOURCES USED BY ENERGY METER FIRMWARE (PIC16F873A VERSION)

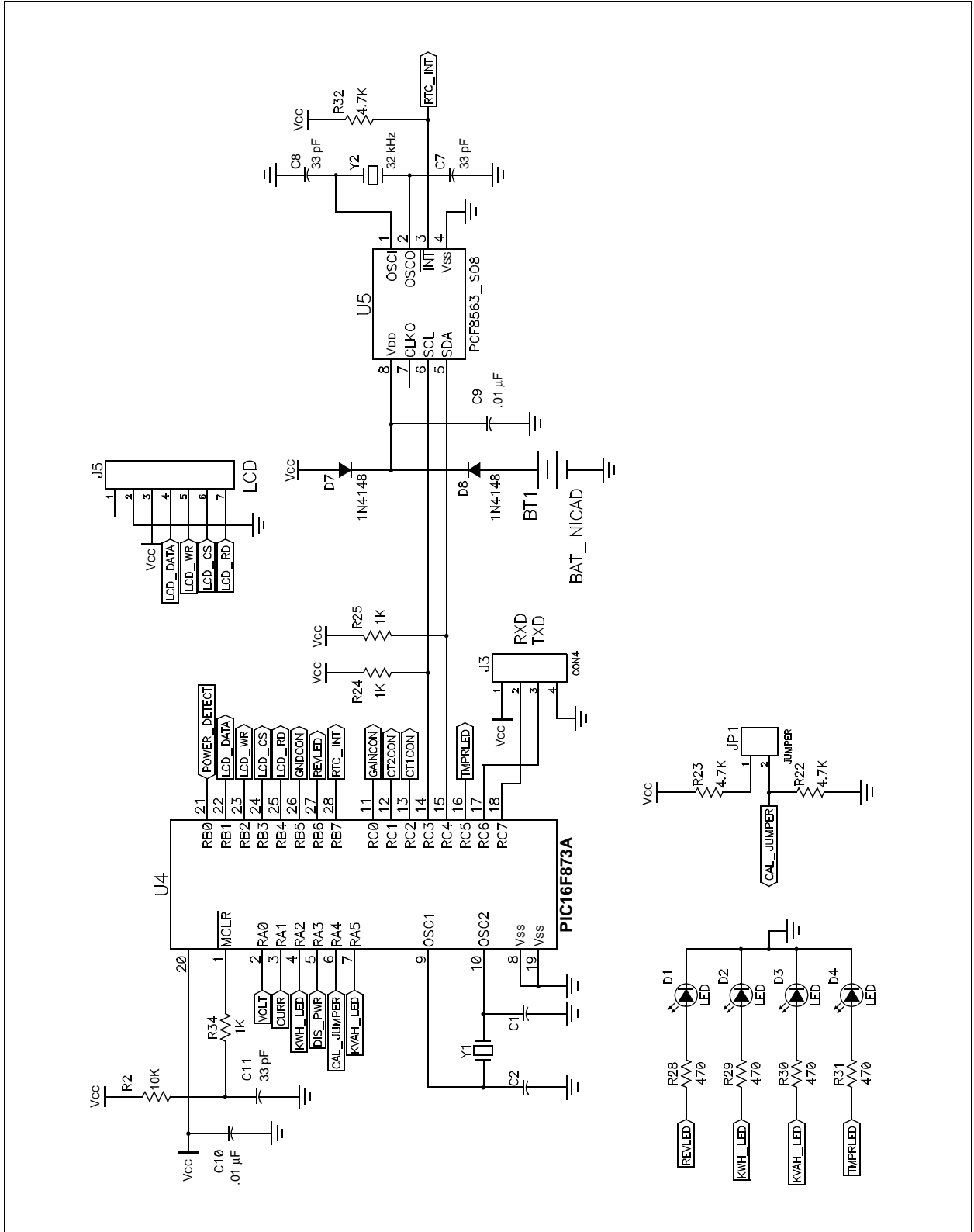
Resource	Used by Application
Program Memory (words)	3.5K
RAM (bytes)	190
Data EEPROM (bytes)	78
I/O Pins	22
Timer Resources	1 (Timer0)
ADC Channels	2

CONCLUSION

Implementing a electronic watt-hour meter with a microcontroller should be a straightforward exercise in design. The PIC16F873A and PIC18F2320 microcontrollers provide a cost-effective way to implement a metering solution with a low part count. Simple current and voltage sampling techniques yield a design that meets Class 1 accuracy for residential metering requirements, while delivering additional features, such as peak demand tracking and tamper detection. All of this can be achieved without sacrificing cost competitiveness.

APPENDIX A: SCHEMATICS

FIGURE A-1: ENERGY METER, SCHEMATIC, PART 1 (MICROCONTROLLER, RTC, LCD INTERFACE AND LEDs)



AN939

FIGURE A-2: ENERGY METER SCHEMATIC, PART 2 (CURRENT AND VOLTAGE SAMPLING, OFFSET GENERATION, GAIN AMPLIFIER AND SERIAL CALIBRATION INTERFACE)

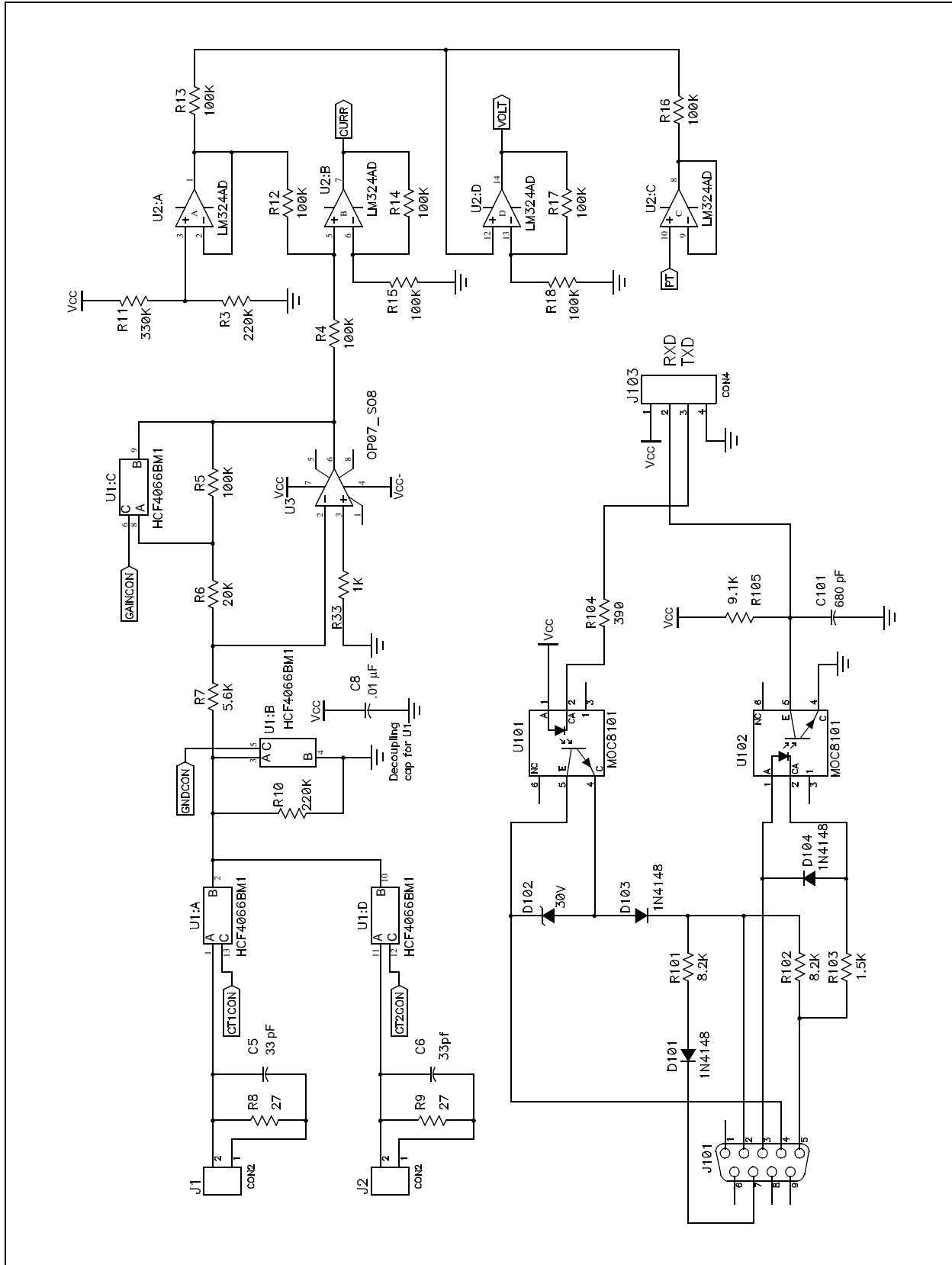
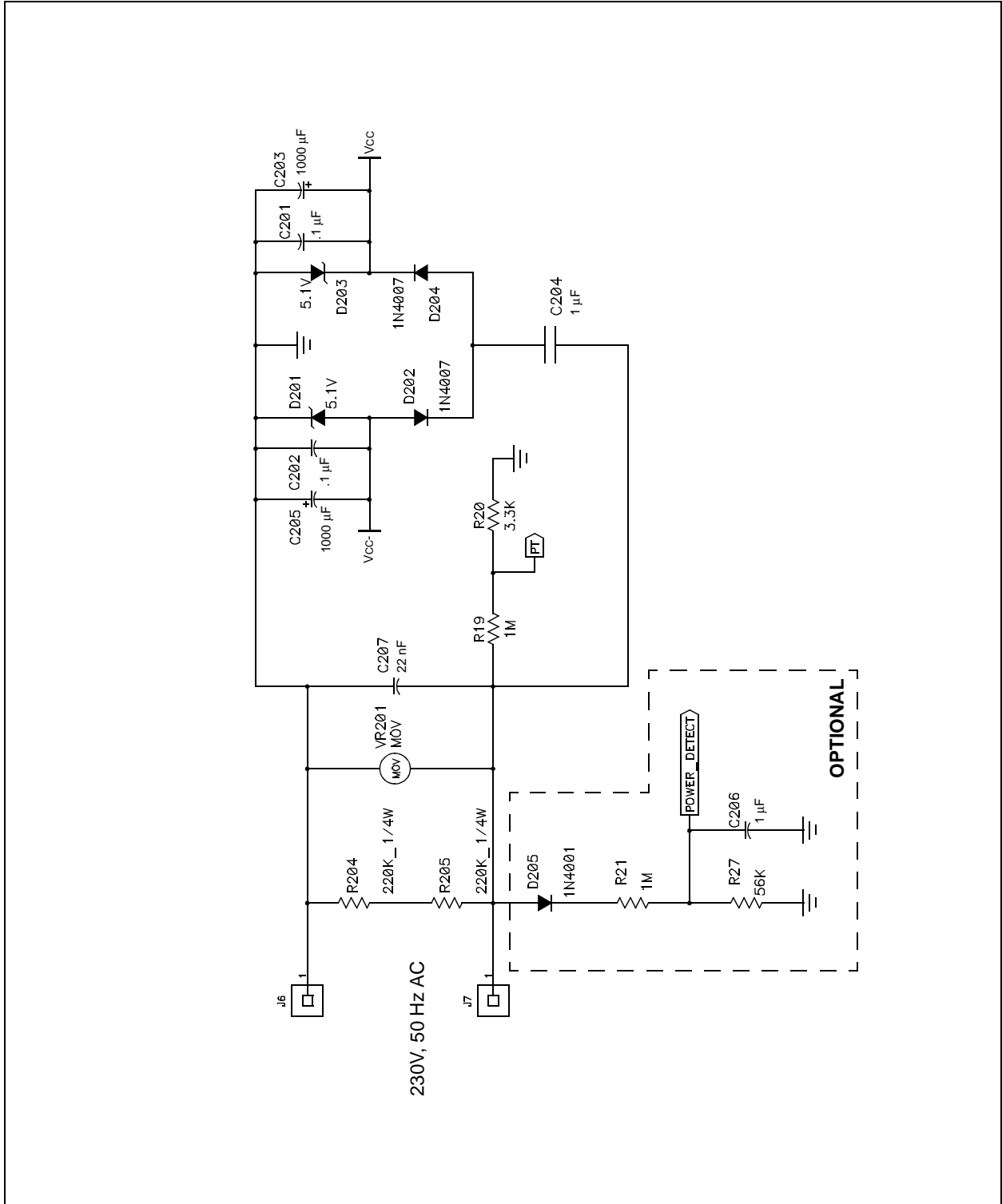


FIGURE A-3: ENERGY METER SCHEMATIC, PART 3 (POWER SUPPLY)



APPENDIX B: SOFTWARE DISCUSSED IN THIS APPLICATION NOTE

For the sake of brevity, a complete listing of the energy meter firmware discussed in this document is not provided here. The complete application, along with the accompanying Meter Calibration utility software, may be downloaded from the Microchip corporate web site at:

www.microchip.com

Note the following details of the code protection feature on Microchip devices:

- Microchip products meet the specification contained in their particular Microchip Data Sheet.
- Microchip believes that its family of products is one of the most secure families of its kind on the market today, when used in the intended manner and under normal conditions.
- There are dishonest and possibly illegal methods used to breach the code protection feature. All of these methods, to our knowledge, require using the Microchip products in a manner outside the operating specifications contained in Microchip's Data Sheets. Most likely, the person doing so is engaged in theft of intellectual property.
- Microchip is willing to work with the customer who is concerned about the integrity of their code.
- Neither Microchip nor any other semiconductor manufacturer can guarantee the security of their code. Code protection does not mean that we are guaranteeing the product as "unbreakable."

Code protection is constantly evolving. We at Microchip are committed to continuously improving the code protection features of our products. Attempts to break Microchip's code protection feature may be a violation of the Digital Millennium Copyright Act. If such acts allow unauthorized access to your software or other copyrighted work, you may have a right to sue for relief under that Act.

Information contained in this publication regarding device applications and the like is provided only for your convenience and may be superseded by updates. It is your responsibility to ensure that your application meets with your specifications. MICROCHIP MAKES NO REPRESENTATIONS OR WARRANTIES OF ANY KIND WHETHER EXPRESS OR IMPLIED, WRITTEN OR ORAL, STATUTORY OR OTHERWISE, RELATED TO THE INFORMATION, INCLUDING BUT NOT LIMITED TO ITS CONDITION, QUALITY, PERFORMANCE, MERCHANTABILITY OR FITNESS FOR PURPOSE. Microchip disclaims all liability arising from this information and its use. Use of Microchip's products as critical components in life support systems is not authorized except with express written approval by Microchip. No licenses are conveyed, implicitly or otherwise, under any Microchip intellectual property rights.

Trademarks

The Microchip name and logo, the Microchip logo, Accuron, dsPIC, KEELOQ, microID, MPLAB, PIC, PICmicro, PICSTART, PRO MATE, PowerSmart, rfPIC, and SmartShunt are registered trademarks of Microchip Technology Incorporated in the U.S.A. and other countries.


AmpLab, FilterLab, Migratable Memory, MXDEV, MXLAB, PICMASTER, SEEVAL, SmartSensor and The Embedded Control Solutions Company are registered trademarks of Microchip Technology Incorporated in the U.S.A.

Analog-for-the-Digital Age, Application Maestro, dsPICDEM, dsPICDEM.net, dsPICworks, ECAN, ECONOMONITOR, FanSense, FlexROM, fuzzyLAB, In-Circuit Serial Programming, ICSP, ICEPIC, MPASM, MPLIB, MPLINK, MPSIM, PICKit, PICDEM, PICDEM.net, PICLAB, PICtail, PowerCal, PowerInfo, PowerMate, PowerTool, rfLAB, rfPICDEM, Select Mode, Smart Serial, SmartTel and Total Endurance are trademarks of Microchip Technology Incorporated in the U.S.A. and other countries.

SQTP is a service mark of Microchip Technology Incorporated in the U.S.A.

All other trademarks mentioned herein are property of their respective companies.

© 2005, Microchip Technology Incorporated, Printed in the U.S.A., All Rights Reserved.

 Printed on recycled paper.

QUALITY MANAGEMENT SYSTEM
CERTIFIED BY DNV
== ISO/TS 16949:2002 ==

Microchip received ISO/TS-16949:2002 quality system certification for its worldwide headquarters, design and wafer fabrication facilities in Chandler and Tempe, Arizona and Mountain View, California in October 2003. The Company's quality system processes and procedures are for its PICmicro® 8-bit MCUs, KEELOQ® code hopping devices, Serial EEPROMs, microperipherals, nonvolatile memory and analog products. In addition, Microchip's quality system for the design and manufacture of development systems is ISO 9001:2000 certified.



WORLDWIDE SALES AND SERVICE

AMERICAS

Corporate Office

2355 West Chandler Blvd.
Chandler, AZ 85224-6199
Tel: 480-792-7200
Fax: 480-792-7277
Technical Support:
<http://support.microchip.com>
Web Address:
www.microchip.com

Atlanta

Alpharetta, GA
Tel: 770-640-0034
Fax: 770-640-0307

Boston

Westford, MA
Tel: 978-692-3848
Fax: 978-692-3821

Chicago

Itasca, IL
Tel: 630-285-0071
Fax: 630-285-0075

Dallas

Addison, TX
Tel: 972-818-7423
Fax: 972-818-2924

Detroit

Farmington Hills, MI
Tel: 248-538-2250
Fax: 248-538-2260

Kokomo

Kokomo, IN
Tel: 765-864-8360
Fax: 765-864-8387

Los Angeles

Mission Viejo, CA
Tel: 949-462-9523
Fax: 949-462-9608

San Jose

Mountain View, CA
Tel: 650-215-1444
Fax: 650-961-0286

Toronto

Mississauga, Ontario,
Canada
Tel: 905-673-0699
Fax: 905-673-6509

ASIA/PACIFIC

Australia - Sydney

Tel: 61-2-9868-6733
Fax: 61-2-9868-6755

China - Beijing

Tel: 86-10-8528-2100
Fax: 86-10-8528-2104

China - Chengdu

Tel: 86-28-8676-6200
Fax: 86-28-8676-6599

China - Fuzhou

Tel: 86-591-8750-3506
Fax: 86-591-8750-3521

China - Hong Kong SAR

Tel: 852-2401-1200
Fax: 852-2401-3431

China - Shanghai

Tel: 86-21-5407-5533
Fax: 86-21-5407-5066

China - Shenyang

Tel: 86-24-2334-2829
Fax: 86-24-2334-2393

China - Shenzhen

Tel: 86-755-8203-2660
Fax: 86-755-8203-1760

China - Shunde

Tel: 86-757-2839-5507
Fax: 86-757-2839-5571

China - Qingdao

Tel: 86-532-502-7355
Fax: 86-532-502-7205

ASIA/PACIFIC

India - Bangalore

Tel: 91-80-2229-0061
Fax: 91-80-2229-0062

India - New Delhi

Tel: 91-11-5160-8631
Fax: 91-11-5160-8632

Japan - Kanagawa

Tel: 81-45-471- 6166
Fax: 81-45-471-6122

Korea - Seoul

Tel: 82-2-554-7200
Fax: 82-2-558-5932 or
82-2-558-5934

Singapore

Tel: 65-6334-8870
Fax: 65-6334-8850

Taiwan - Kaohsiung

Tel: 886-7-536-4818
Fax: 886-7-536-4803

Taiwan - Taipei

Tel: 886-2-2500-6610
Fax: 886-2-2508-0102

Taiwan - Hsinchu

Tel: 886-3-572-9526
Fax: 886-3-572-6459

EUROPE

Austria - Weis

Tel: 43-7242-2244-399
Fax: 43-7242-2244-393

Denmark - Ballerup

Tel: 45-4450-2828
Fax: 45-4485-2829

France - Massy

Tel: 33-1-69-53-63-20
Fax: 33-1-69-30-90-79

Germany - Ismaning

Tel: 49-89-627-144-0
Fax: 49-89-627-144-44

Italy - Milan

Tel: 39-0331-742611
Fax: 39-0331-466781

Netherlands - Drunen

Tel: 31-416-690399
Fax: 31-416-690340

England - Berkshire

Tel: 44-118-921-5869
Fax: 44-118-921-5820