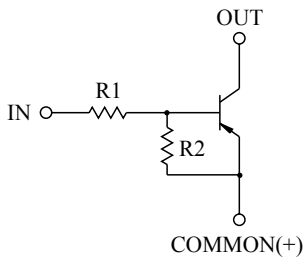


SWITCHING APPLICATION.
INTERFACE CIRCUIT AND DRIVER CIRCUIT APPLICATION.

FEATURES

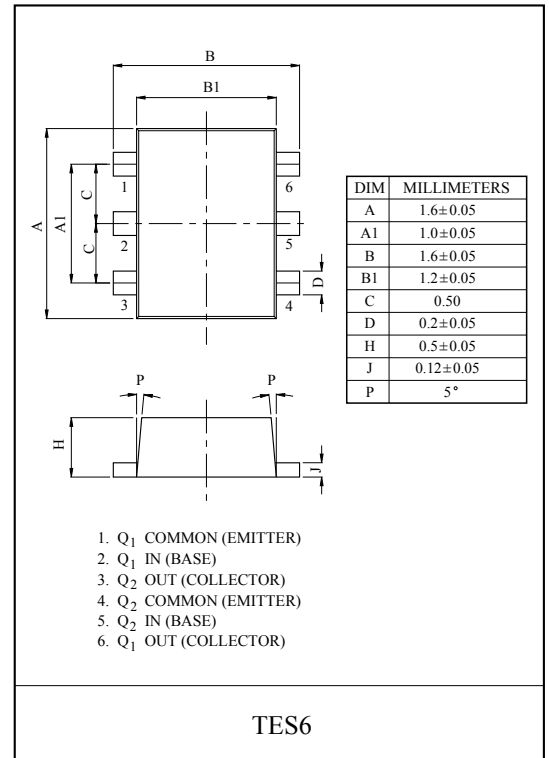
- With Built-in Bias Resistors.
- Simplify Circuit Design.
- Reduce a Quantity of Parts and Manufacturing Process.
- High Packing Density.

EQUIVALENT CIRCUIT

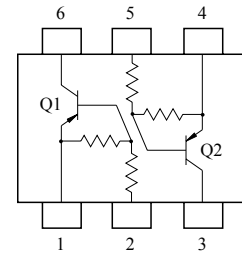


BIAS RESISTOR VALUES

TYPE NO.	R1(kΩ)	R2(kΩ)
KRA751E	4.7	4.7
KRA752E	10	10
KRA753E	22	22
KRA754E	47	47
KRA755E	2.2	47
KRA756E	4.7	47



EQUIVALENT CIRCUIT (TOP VIEW)



MAXIMUM RATING (Ta=25°C)

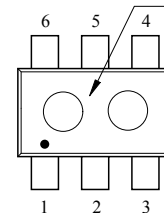
CHARACTERISTIC		SYMBOL	RATING	UNIT
Output Voltage	KRA751E~756E	V_O	-50	V
Input Voltage	KRA751E	V_I	-20, 10	V
	KRA752E		-30, 10	
	KRA753E		-40, 10	
	KRA754E		-40, 10	
	KRA755E		-12, 5	
	KRA756E		-20, 5	
Output Current	KRA751E~756E	I_O	-100	mA
Power Dissipation		P_D^*	200	mW
Junction Temperature		T_j	150	°C
Storage Temperature Range		T_{stg}	-55~150	°C

* Total Rating.

MARK SPEC

TYPE	KRA751E	KRA752E	KRA753E	KRA754E	KRA755E	KRA756E
MARK	PA	PB	PC	PD	PE	PF

Marking Type Name



KRA751E~KRA756E

ELECTRICAL CHARACTERISTICS (Ta=25°C)

CHARACTERISTIC		SYMBOL	TEST CONDITION	MIN.	TYP.	MAX.	UNIT
Output Cut-off Current	KRA751E ~ 756E	$I_{O(OFF)}$	$V_O=-50V, V_I=0$	-	-	-500	nA
DC Current Gain	KRA751E	G_I	$V_O=-5V, I_O=-10mA$	30	55	-	
	KRA752E			50	80	-	
	KRA753E			70	120	-	
	KRA754E			80	200	-	
	KRA755E			80	200	-	
	KRA756E			80	200	-	
Output Voltage	KRA751E ~ 756E	$V_{O(ON)}$	$I_O=-10mA, I_I=-0.5mA$	-	-0.1	-0.3	V
Input Voltage (ON)	KRA751E	$V_{I(ON)}$	$V_O=-0.2V, I_O=-5mA$	-	-1.5	-2.0	V
	KRA752E			-	-1.8	-2.4	
	KRA753E			-	-2.1	-3.0	
	KRA754E			-	-2.8	-5.0	
	KRA755E			-	-0.8	-1.1	
	KRA756E			-	-0.9	-1.3	
Input Voltage (OFF)	KRA751E ~ 754E	$V_{I(OFF)}$	$V_O=-5V, I_O=-0.1mA$	-1.0	-1.2	-	V
	KRA755E ~ 756E			-0.5	-0.65	-	
Transition Frequency	KRA751E ~ 756E	f_T^*	$V_O=-10V, I_O=-5mA$	-	200	-	MHz
Input Current	KRA751E	I_I	$V_I=-5V$	-	-	-1.8	mA
	KRA752E			-	-	-0.88	
	KRA753E			-	-	-0.36	
	KRA754E			-	-	-0.18	
	KRA755E			-	-	-3.6	
	KRA756E			-	-	-1.8	

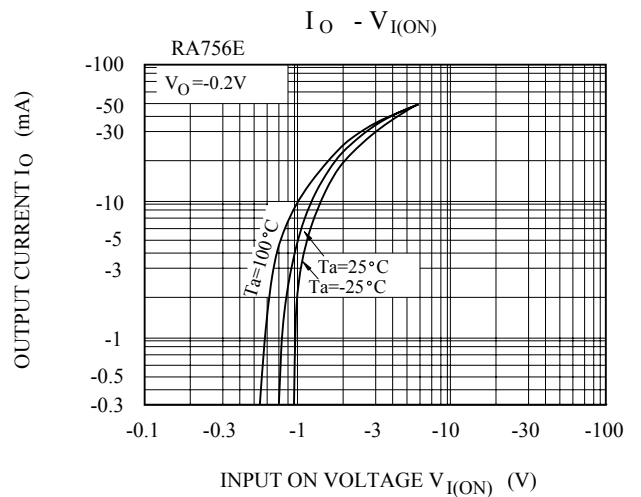
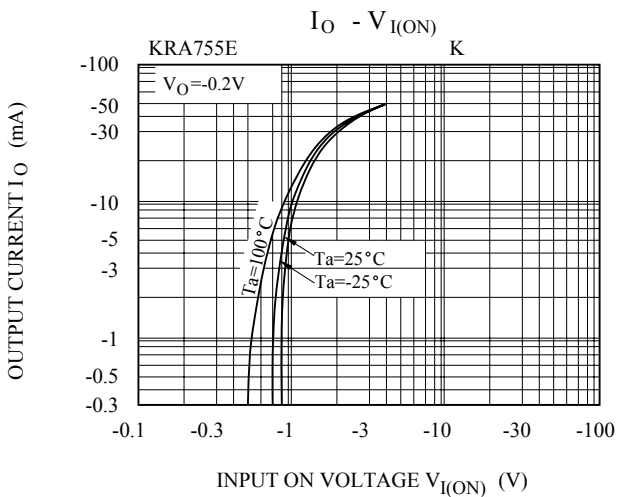
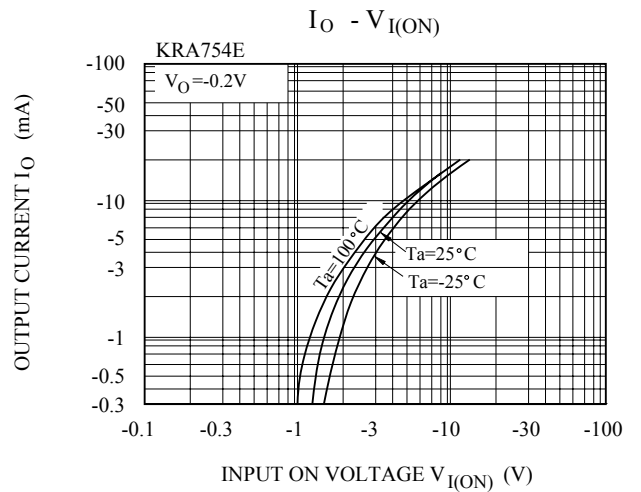
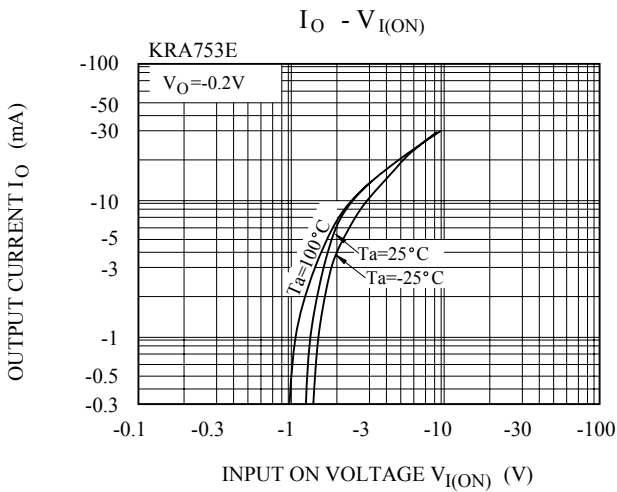
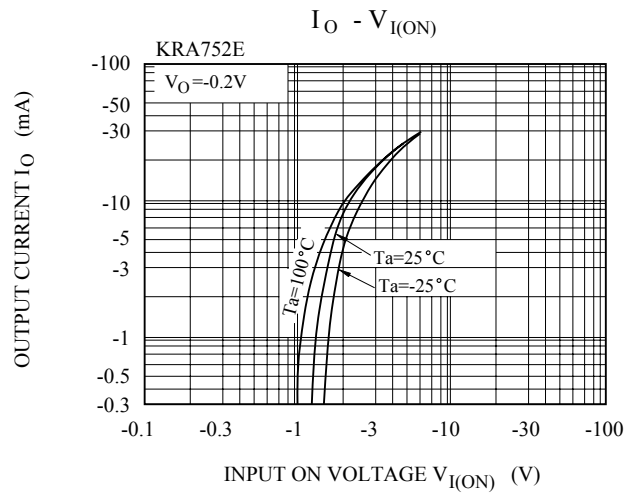
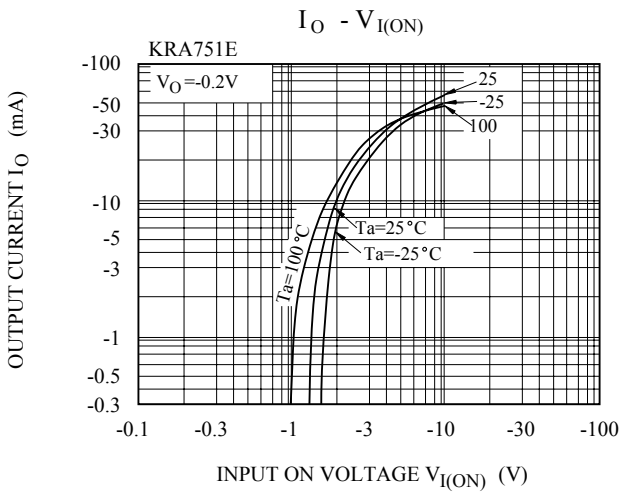
Note : * Characteristic of Transistor Only.

KRA751E~KRA756E

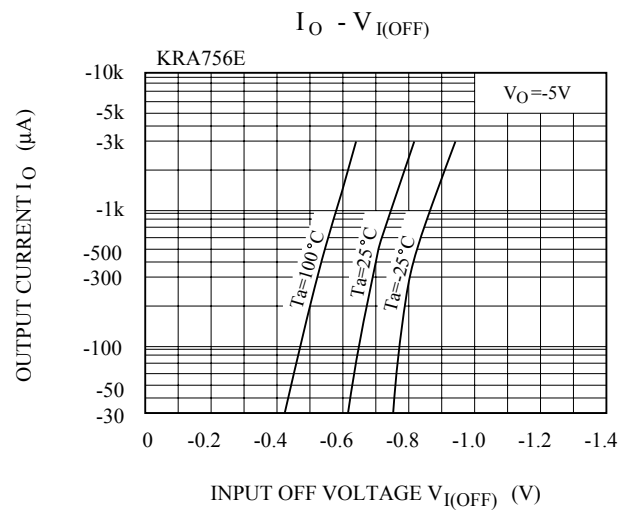
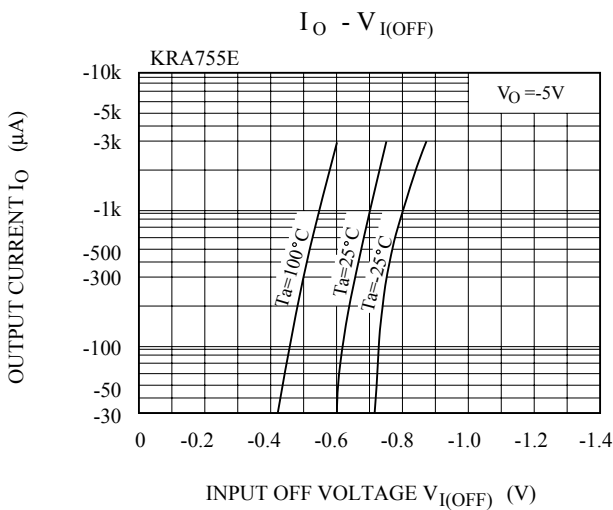
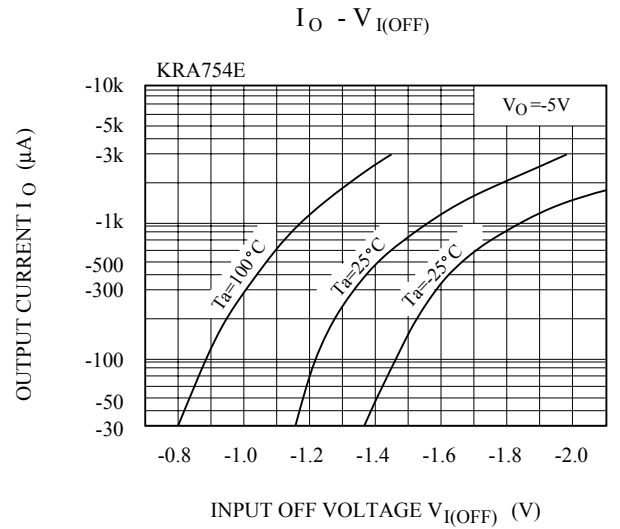
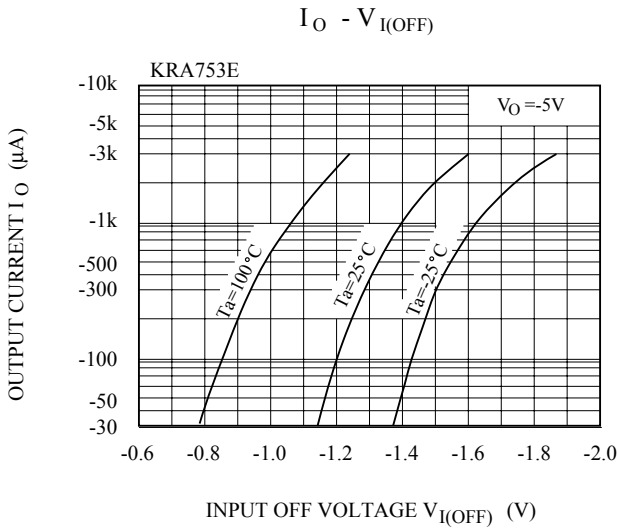
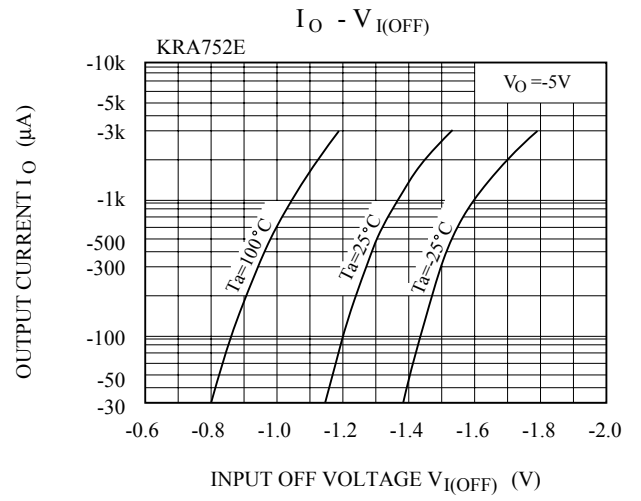
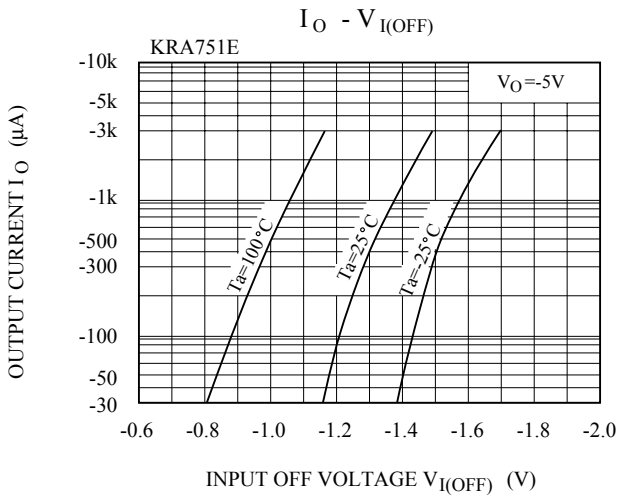
ELECTRICAL CHARACTERISTICS (Ta=25°C)

CHARACTERISTIC		SYMBOL	TEST CONDITION	MIN.	TYP.	MAX.	UNIT	
Switching Time	Rise Time	KRA751E	V _O =-5V V _{IN} =-5V R _L =1kΩ	-	0.07	-	μS	
		KRA752E		-	0.06	-		
		KRA753E		-	0.2	-		
		KRA754E		-	0.24	-		
		KRA755E		-	0.02	-		
		KRA756E		-	0.07	-		
	Storage Time	KRA751E		t _{stg}	-	1.1		-
		KRA752E		-	-	1.1		-
		KRA753E		-	-	1.1		-
		KRA754E		-	-	1.1		-
		KRA755E		-	-	1.1		-
		KRA756E		-	-	1.1		-
	Fall Time	KRA751E		t _f	-	0.15		-
		KRA752E		-	-	0.24		-
		KRA753E		-	-	0.38		-
		KRA754E		-	-	0.63		-
		KRA755E		-	-	0.1		-
		KRA756E		-	-	0.2		-

KRA751E~KRA756E



KRA751E~KRA756E



KRA751E~KRA756E

