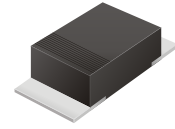


CDBM220-G Thru CDBM2100-G

Reverse Voltage: 20 - 100 Volts
Forward Current: 2.0 Amp
RoHS Device

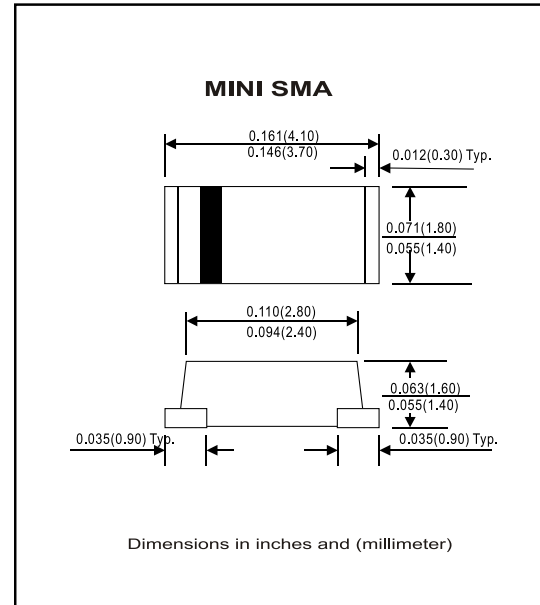


Features

- Ideal for surface mount applications
- Easy pick and place
- Plastic package has Underwriters Lab. flammability classification 94V-0
- Exceeds environmental standard MIL-S-19500/228
- Low leakage current

Mechanical data

- Case: Mini SMA/SOD-123 molded plastic
- Terminals: solderable per MIL-STD-750, method 2026
- Polarity: Color band denotes cathode end
- Approx. Weight: 0.04 gram



Maximum Ratings and Electrical Characteristics

Parameter	Symbol	CDBM220-G	CDBM240-G	CDBM260-G	CDBM280-G	CDBM2100-G	Unit
Max. Repetitive Peak Reverse Voltage	V _{RRM}	20	40	60	80	100	V
Max. DC Blocking Voltage	V _{DC}	20	40	60	80	100	V
Max. RMS Voltage	V _{RMS}	14	28	42	56	70	V
Peak Surge Forward Current 8.3ms single half sine-wave superimposed on rate load (JEDEC method)	I _{FSM}	50					A
Max. Average Forward Current	I _o	2.0					A
Max. Instantaneous Forward Current at 1.0 A	V _F	0.50		0.70		0.85	V
Max. DC Reverse Current at Rated DC Blocking Voltage Ta=25°C	I _R	0.5					mA
Ta=125°C		10					
Typical. Thermal Resistance (Note 1)	R _{θJA} R _{θJL}	85 20					°C/W
Max. Operating Junction Temperature	T _j	125			150		°C
Storage Temperature	T _{STG}	-55 to +150					°C

Note 1: Thermal resistance from junction to ambient and junction to to lead P.C.B. Mounted on 0.2 x 0.2 inch² copper pad areas

Rating and Characteristic Curves (CDBM220-G Thru CDBM2100-G)

Fig. 1 - Reverse Characteristics

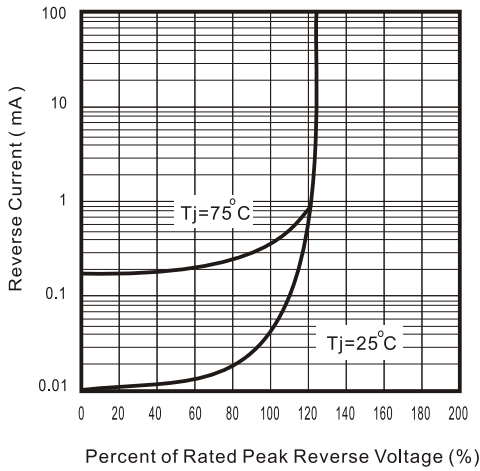


Fig.2 - Forward Characteristics

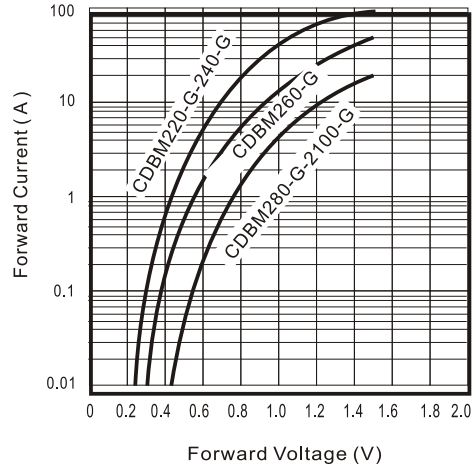


Fig. 3 - Junction Capacitance

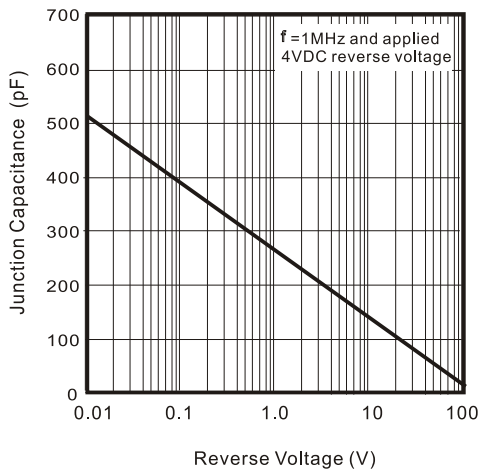


Fig. 4 - Current Derating Curve

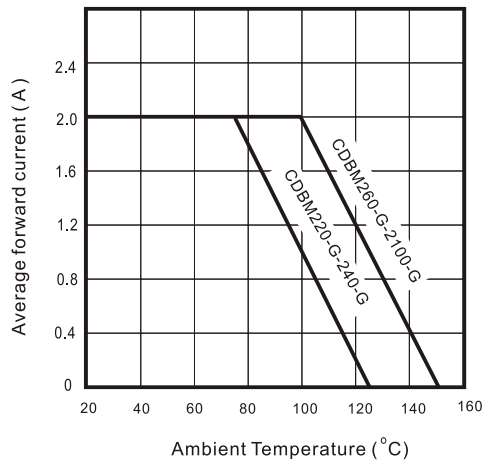


Fig. 5 - Non repetitive Forward Surge Current

