

FEATURES

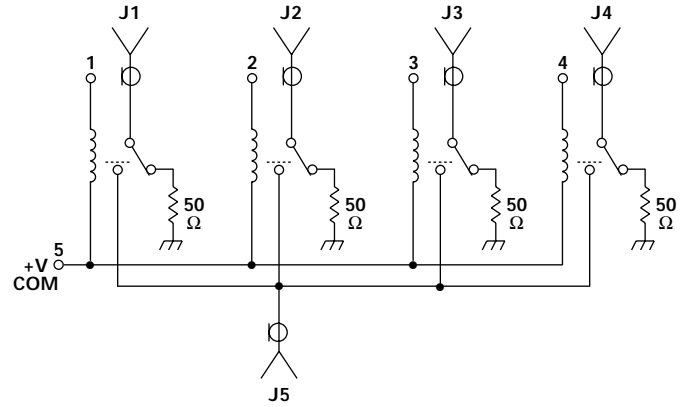
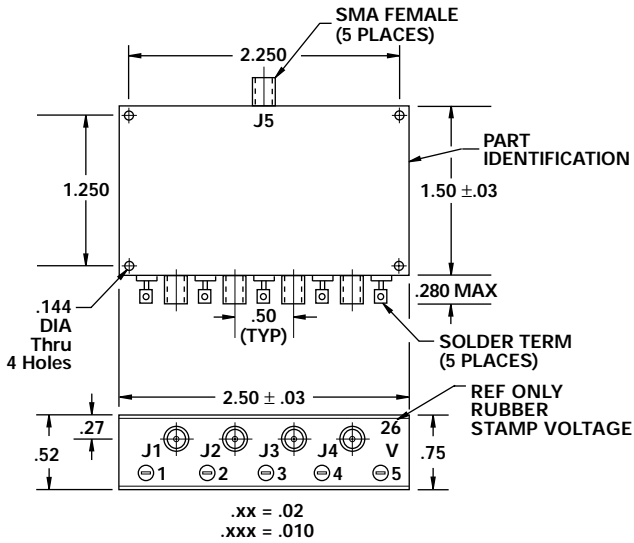
- DC - 500 MHz
- 70 dB Isolation
- Non-Reflective
- 50 Watt CW
- SMA Connectors



MODEL NO.
100C0485

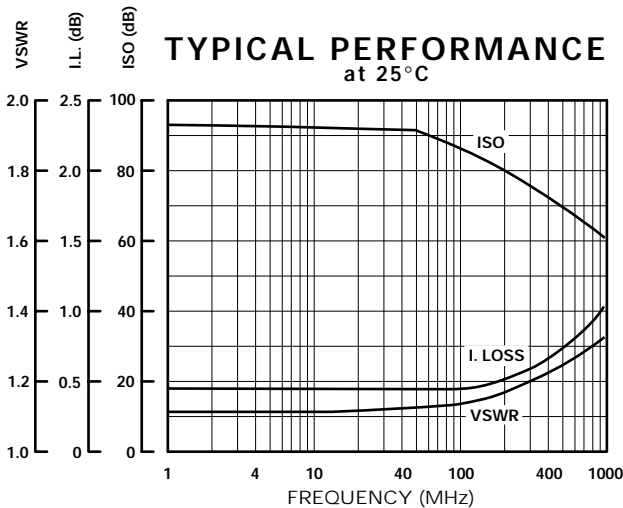
SP4T RELAY

SP4T



GUARANTEED PERFORMANCE

Parameter	Min	Typ	Max	Units	Conditions
Operating Frequency	DC		500	MHz	
DC Voltage					See Table
Insertion Loss		0.7	1.0	dB	
Isolation	70	74		dB	
VSWR		1.35/1	1.6/1		
Impedance		50		OHMS	
Switching Speed			3	mSEC	
RF Power			50	W	CW
Operating Temperature	-20	+25	+55	°C	TA



CONTROL VOLTAGE TABLE	
Voltage	Current - Typical
6	130 mA per throw
12	64 mA per throw
18	42 mA per throw
26	34 mA per throw

PART NO. EXAMPLE - SEE TABLE
100C0485 - 6

Basic Part Number | Dash No. per Control Voltage Table

This datasheet has been download from:

www.datasheetcatalog.com

Datasheets for electronics components.