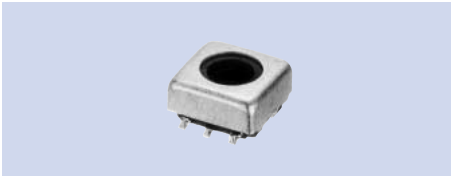


# Adjustable Type Coils M Type Series

Coils, Filters

## M5-S2

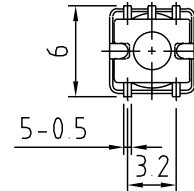
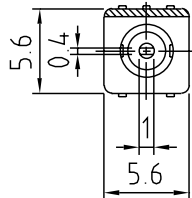


### Specifications

- (1) 0.03~3 $\mu$ H
- (2) 10~200MHz
- (3) F: $\pm$ 1.5%  
L: $\pm$ 3%
- (4) -
- (5) 40~70

### Features

- SMD
- 2000pcs./Reel



## M5-N1

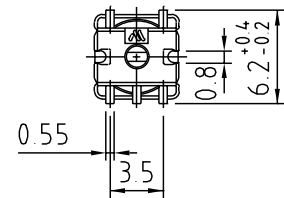
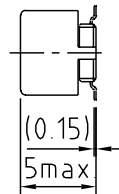
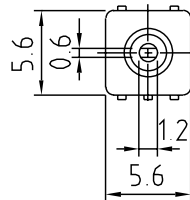


### Specifications

- (1) 0.03~40 $\mu$ H
- (2) 3~200MHz
- (3) F: $\pm$ 2%  
L: $\pm$ 4%
- (4) -
- (5) 30~80

### Features

- SMD
- 1000pcs./Reel



## M5-N

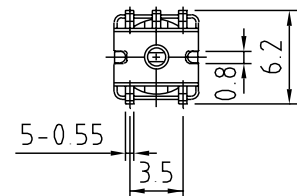
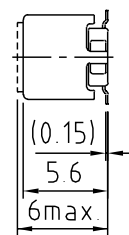
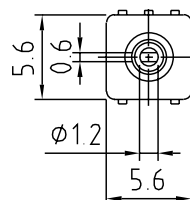


### Specifications

- (1) 0.03~130 $\mu$ H
- (2) 3~200MHz
- (3) F: $\pm$ 2%  
L: $\pm$ 4%
- (4) -
- (5) 30~80

### Features

- SMD
- 1000pcs./Reel

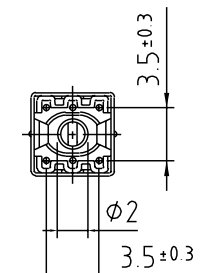
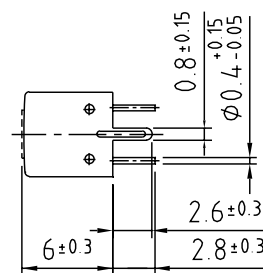
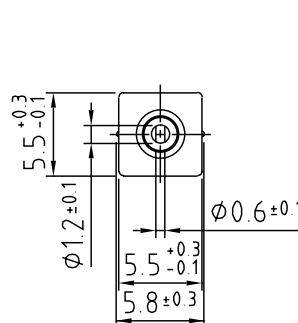


## M5-H1



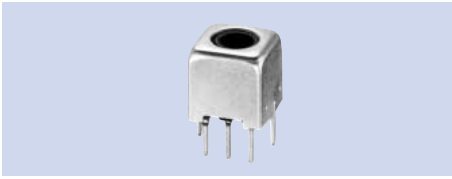
### Specifications

- (1) 0.03~130 $\mu$ H
- (2) 10~200MHz
- (3) F: $\pm$ 2%  
L: $\pm$ 4%
- (4) -
- (5) 30~80

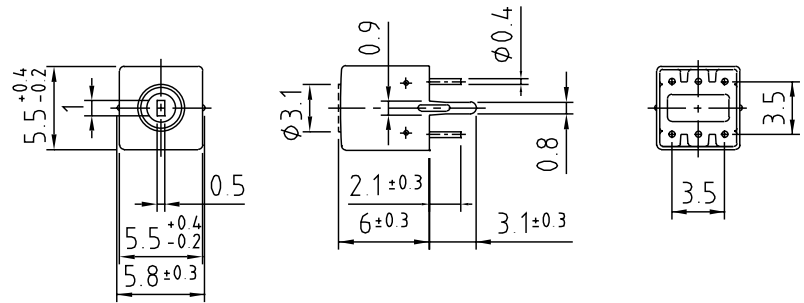


- (1) Inductance
- (2) Operational frequency
- (3) Variable range of F & L
- (4) Internal capacitance
- (5) Unloaded Q

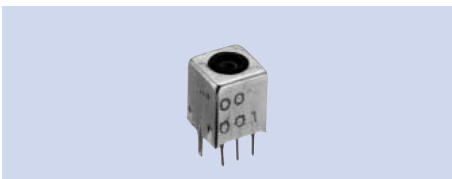
### M5-D2



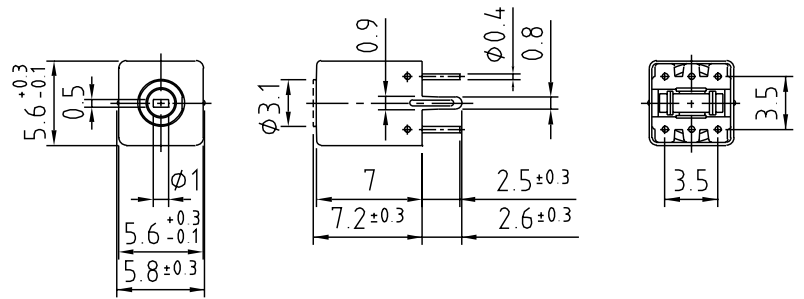
- Specifications**  
 (1) 0.03~10 $\mu$ H  
 (2) 10~200MHz  
 (3) F: $\pm$ 2%  
 L: $\pm$ 4%  
 (4) -  
 (5) 30~80



### M5-F1



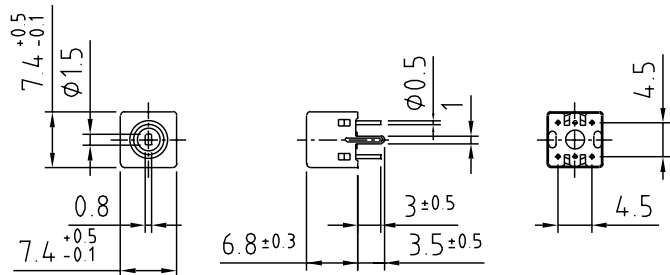
- Specifications**  
 (1) 0.03~18 $\mu$ H  
 (2) 10~200MHz  
 (3) F: $\pm$ 2%  
 L: $\pm$ 4%  
 (4) 10~82pF  
 (5) 30~80



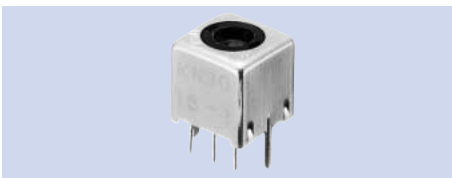
### M7-C



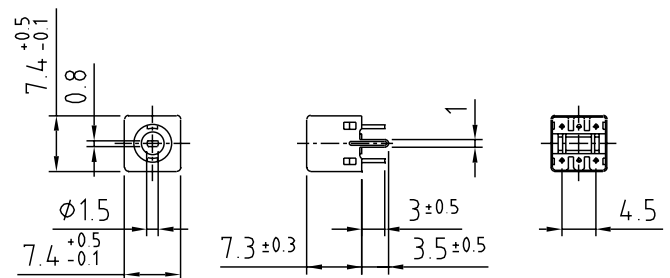
- Specifications**  
 (1) 0.1~40 $\mu$ H  
 (2) 10~120MHz  
 (3) F: $\pm$ 2%  
 L: $\pm$ 5%  
 (4) -  
 (5) 70~110



### M7-B

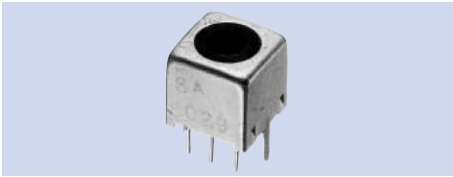


- Specifications**  
 (1) 0.1~80 $\mu$ H  
 (2) 10~120MHz  
 (3) F: $\pm$ 2%  
 L: $\pm$ 4%  
 (4) 10~120pF  
 (5) 40~100



- (1) Inductance  
 (2) Operational frequency  
 (3) Variable range of F & L  
 (4) Internal capacitance  
 (5) Unloaded Q

### M7-F1

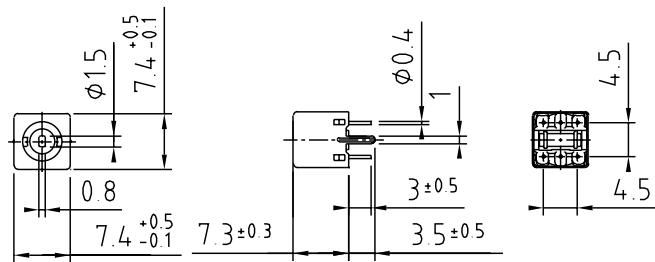


**Specifications**

- (1) 0.1~95μH
- (2) 10~200MHz
- (3) F:±2%  
L:±4%
- (4) 10~200pF
- (5) 30~100

**Features**

FM-detector with Phase discriminator.



### M7-A

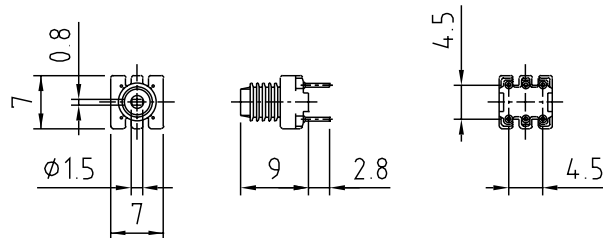


**Specifications**

- (1) 0.1~40μH
- (2) 10~200MHz
- (3) F:±2%  
L:±5%
- (4) -
- (5) 40~100

**Features**

Can be soldered by a reflow furnace.

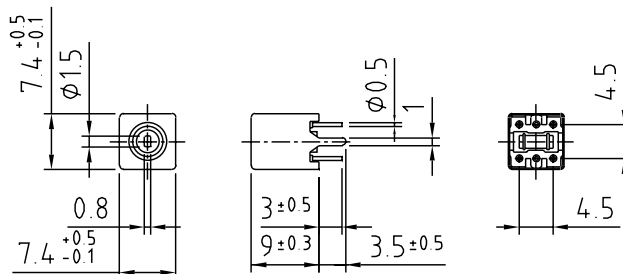


### M7-T1

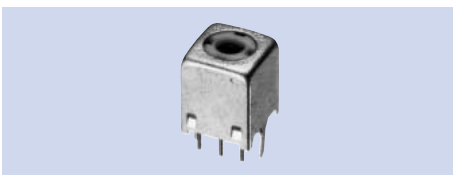


**Specifications**

- (1) 0.1~40μH
- (2) 10~200MHz
- (3) F:±2%  
L:±5%
- (4) 10~120pF
- (5) 40~100



### M7-F

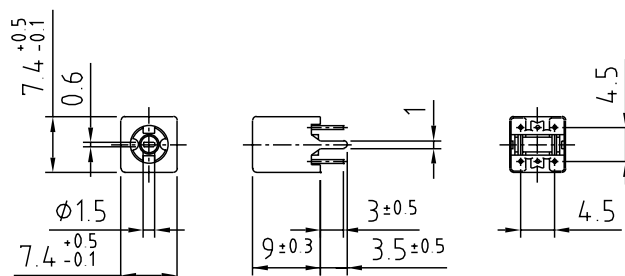


**Specifications**

- (1) 0.1μ~95μH
- (2) 10~200MHz
- (3) F:±2%  
L:±4%
- (4) 10~120pF
- (5) 30~100

**Features**

FM-detector with Phase discriminator.



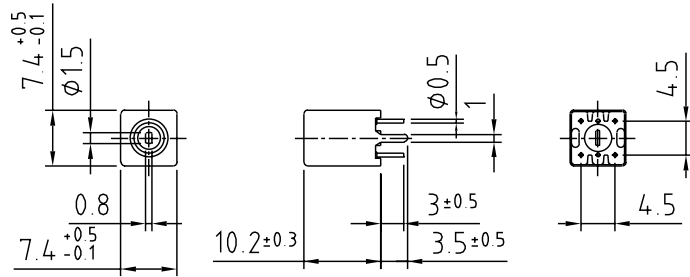
- (1) Inductance
- (2) Operational frequency
- (3) Variable range of F & L
- (4) Internal capacitance
- (5) Unloaded Q

## M7-D3



**Specifications**

- (1) 0.1~40 $\mu$ H
- (2) 10~200MHz
- (3) F: $\pm$ 3%  
L: $\pm$ 6%
- (4) -
- (5) 40~100

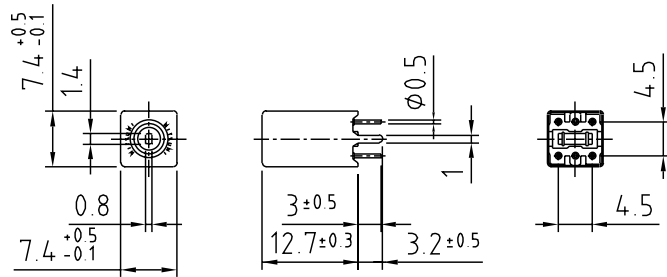


## M7-M



**Specifications**

- (1) 0.1~150 $\mu$ H
- (2) 1~200MHz
- (3) F: $\pm$ 3%  
L: $\pm$ 6%
- (4) 10~120pF
- (5) 40~100



- (1) Inductance
- (2) Operational frequency
- (3) Variable range of F & L
- (4) Internal capacitance
- (5) Unloaded Q