



### Features

- Thin 5 mm square SMD
- Three different operating forces
- 0.8 mm height without knob (1.5 mm with knob)
- Compatible with surface mount reflow soldering processes
- RoHS compliant\*

Model STJN-5 is currently available, although not recommended for new designs.

## STJN-5 SMD Thin Tact Switch

### Electrical Characteristics

Max. Power Rating	.....12 VDC max., 50 mA
Contact Resistance	.....100 milliohms max.
Insulation Resistance	.....100 megohms min., 100 VDC
Dielectric Strength	.....AC 250 V for 1 minute
Bounce	
On	.....3 ms max.
Off	.....10 ms max.
Circuit	.....N.O. SPST

### Mechanical Characteristics

Mechanical Life	
100 gf + 160 gf	.....500,000 cycles min.
260 gf	.....200,000 cycles min.
Actuation Force	
.....100 gf ±50 gf (1.0 N ±0.5 N)	
.....160 gf ±50 gf (1.6 N ±0.5 N)	
.....260 gf ±60 gf (2.6 N ±0.6 N)	
Stroke	.....0.25 mm +0.10/-0.20

### General Characteristics

Switch Type	.....(N.O.) SPST
Operating Temperature Range	.....-20 °C to +70 °C
Storage Temperature Range	.....-40 °C to +85 °C

### How to Order

**STJ N - 5 08 - N TR**

Model \_\_\_\_\_  
Thin SMD Tact Switch

Product Code \_\_\_\_\_  
N = Non-washable

Size \_\_\_\_\_  
5 = 5 mm

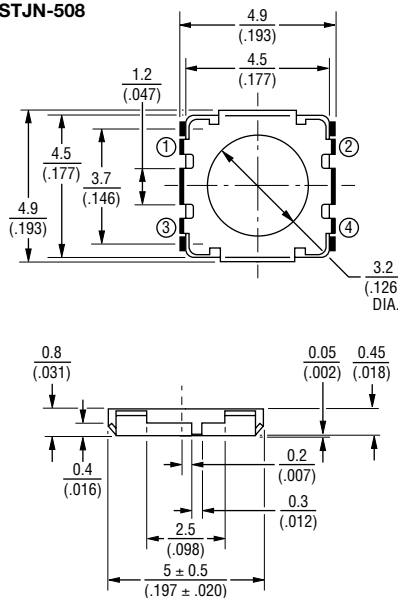
Height \_\_\_\_\_  
08 = 0.8 mm (without knob)  
15 = 1.5 mm (with knob)

Actuating Force \_\_\_\_\_  
K = 100 gf (1.0 N)  
N = 160 gf (1.6 N)  
R = 260 gf (2.6 N)

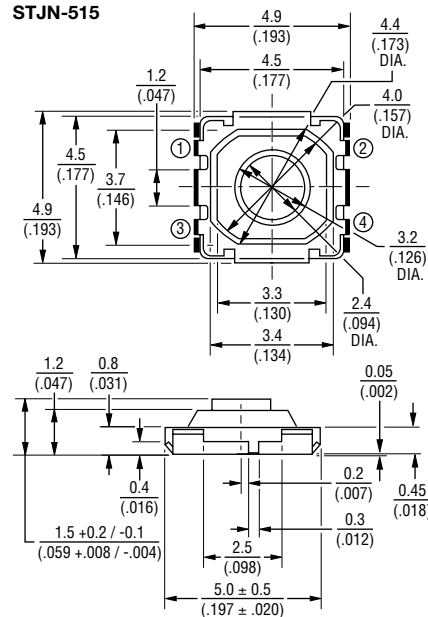
Packaging \_\_\_\_\_  
TR = Embossed Tape  
5,000 pcs./reel

### Product Dimensions

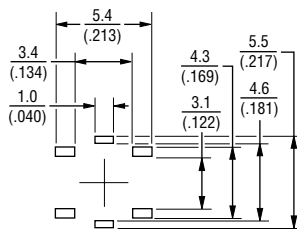
STJN-508



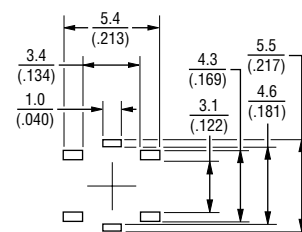
STJN-515



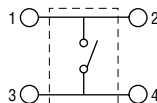
### Recommended PCB Layout



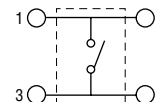
### Recommended PCB Layout



### Circuit Diagram



### Circuit Diagram



TOLERANCES: ±.38 EXCEPT WHERE NOTED.  
DIMENSIONS:  $\frac{MM}{(IN)}$

### Reflow Soldering Profile

