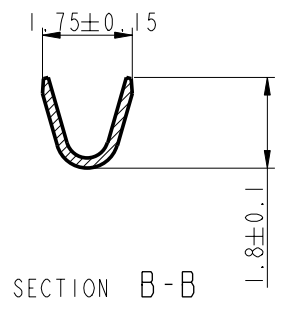
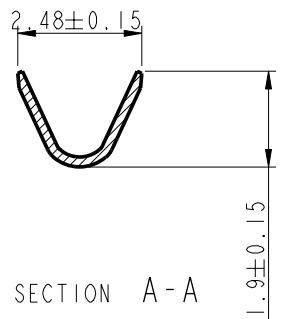
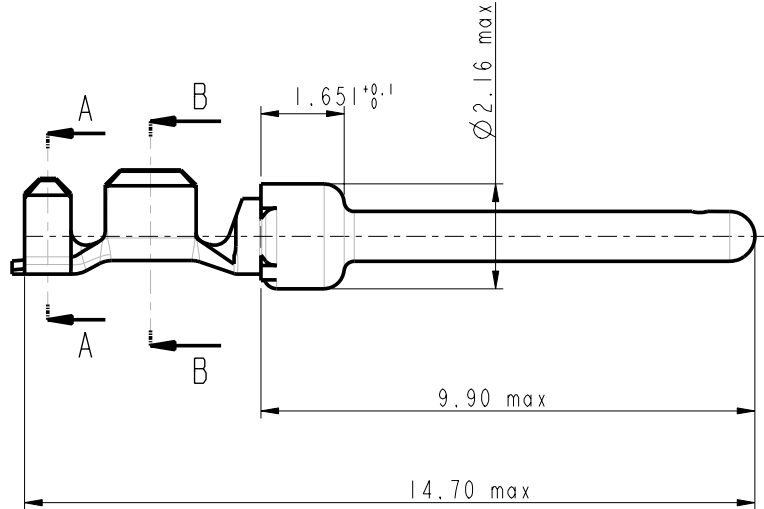
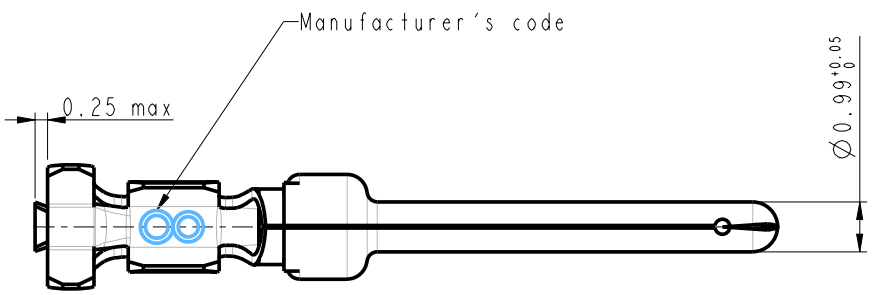


Tous droits strictement réservés. Reproduction ou communication à des tiers interdite sans autorisation écrite de son propriétaire. Property of FCI. All rights reserved. Reproduction or communication to third parties without written authority from the proprietor. Copyright FCI.

FCI

All rights strictly reserved. Reproduction or issue to third parties in any form without written authority from the proprietor. Property of FCI. Copyright FCI.



NOTES:

- 1-Material:brass,thickness 0.20
- 2-Finish on contact area:see table
finish on termination:bright tin lead over nickel
- 3-Wire range:20 to 24 AWG
- 4-Max outer dia of wire insulator:1.73 mm
- 5-Current carrying capacity per contact:
5 Amps max when crimped to #20 AWG
5 Amps max when crimped to #22 AWG
3 Amps max when crimped to #24 AWG
- 6-After 5 insertions into connector,
contact retention must be 5 pounds axial load min
- 7-When contact is crimped to 20 AWG,the insulation support crimped height must be 1.78 mm max to ensure a proper insertion into housing
- 6-Packaging:Box of 500 contacts

NOTE : ROHS INFORMATIONS

The LF products meet European union directives and other country regulations as described in GS-22-008
Terminations plating spec : 2um Nickel min + 2um Sn min
Packaging Spec : see GS-14-930

Core range	-
8656352064LF	Flash Au
8656352064	Flash Au
PART NUMBER	Plating

lfr	ecn no	dr	date
C	LS05-006	MPE	24/06/05
-	-	-	-
-	-	-	-
-	-	-	-
-	-	-	-
-	-	-	-
-	-	-	-
-	-	-	-
-	-	-	-

FCI www.fciconnect.com		surface - ✓	tolerance	projection	size A3	Scale 10:1
Dr	C JARRY	28/01/97	Product family -	Material	SEE NOTES	ECN
Eng			Spec ref			
Chr						
Appr						
CRIMP PIN				#wire 20-24 in box 500 cts		Rev. C
catalog no				- CUSTOMER COPY		sheet 1 of 1