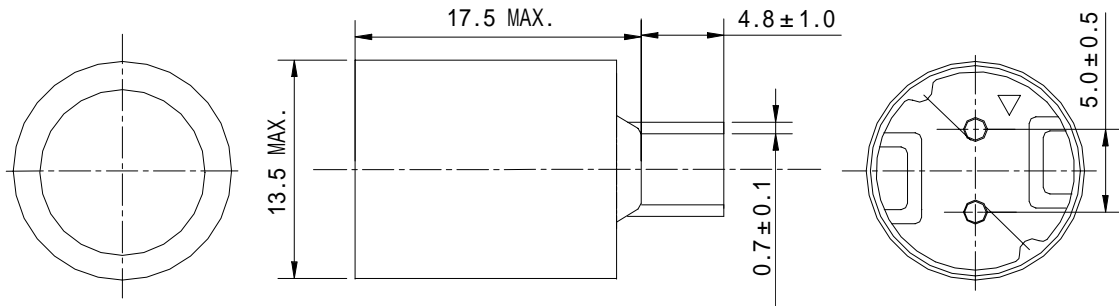


# 仕様書

形名  
RCP1317

## 1. 外形

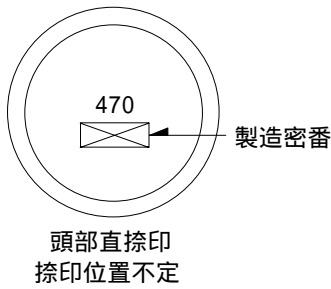
### 1-1. 寸法図(mm)



\* 端子の寸法は、はんだつららを除く。

\* 端子のピッチは、端子根元での寸法。

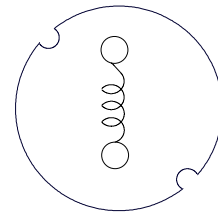
### 1-2. 捺印表示例



**RoHS**  
compliance  
Cd: Max. 0.01wt%  
others: Max. 0.1wt%

## 2. コイル仕様

### 2-1. 端子接続図(裏面図)



### 2-2. 電気的特性

| NO. | 品名             | 表示  | インダクタンス<br><以内><br>1 | D.C.R.( )<br><以下><br>(at 20 )<br>2 | 直流重畳許容電流(A)<br>3 |           | 温度上昇許容電流(A)<br>4 | スミダコード |
|-----|----------------|-----|----------------------|------------------------------------|------------------|-----------|------------------|--------|
|     |                |     |                      |                                    | (at 20 )         | (at 100 ) |                  |        |
| 01  | RCP1317NP-33ØM | 330 | 33 µH ± 20%          | 58m (46m)                          | 4.80             | 4.40      | 3.60             | -0005  |
| 02  | RCP1317NP-47ØM | 470 | 47 µH ± 20%          | 69m (55m)                          | 4.30             | 3.80      | 3.30             | -0006  |
| 03  | RCP1317NP-68ØM | 680 | 68 µH ± 20%          | 101m (81m)                         | 3.30             | 3.00      | 2.60             | -0007  |
| 04  | RCP1317NP-82ØM | 820 | 82 µH ± 20%          | 110m (88m)                         | 3.10             | 2.70      | 2.50             | -0008  |
| 05  | RCP1317NP-1Ø1M | 101 | 100 µH ± 20%         | 125m (100m)                        | 2.80             | 2.50      | 2.30             | -0009  |

# 仕様書

形名  
RCP1317

| NO. | 品名                    | 表示  | インダクタンス<br><以内><br>1  | D.C.R.( )<br><以下><br>(at 20 )<br>2 | 直流重畳許容電流(A)<br>3 |           | 温度上昇許容電流(A)<br>4 | スミダコード |
|-----|-----------------------|-----|-----------------------|------------------------------------|------------------|-----------|------------------|--------|
|     |                       |     |                       |                                    | (at 20 )         | (at 100 ) |                  |        |
| 06  | RCP1317NP-121L        | 121 | 120 $\mu$ H $\pm$ 15% | 139m (116m)                        | 2.60             | 2.30      | 2.20             | -0010  |
| 07  | RCP1317NP-151L        | 151 | 150 $\mu$ H $\pm$ 15% | 195m (156m)                        | 2.40             | 2.10      | 1.90             | -0011  |
| 08  | RCP1317NP-181L        | 181 | 180 $\mu$ H $\pm$ 15% | 213m (171m)                        | 2.20             | 1.80      | 1.80             | -0012  |
| 09  | RCP1317NP-221L        | 221 | 220 $\mu$ H $\pm$ 15% | 278m (223m)                        | 1.90             | 1.70      | 1.60             | -0013  |
| 10  | RCP1317NP-271L        | 271 | 270 $\mu$ H $\pm$ 15% | 0.33 (0.26)                        | 1.70             | 1.60      | 1.55             | -0014  |
| 11  | RCP1317NP-331L        | 331 | 330 $\mu$ H $\pm$ 15% | 0.36 (0.29)                        | 1.60             | 1.40      | 1.50             | -0015  |
| 12  | RCP1317NP-391L        | 391 | 390 $\mu$ H $\pm$ 15% | 0.44 (0.35)                        | 1.45             | 1.28      | 1.30             | -0016  |
| 13  | RCP1317NP-471L        | 471 | 470 $\mu$ H $\pm$ 15% | 0.53 (0.42)                        | 1.35             | 1.17      | 1.15             | -0017  |
| 14  | RCP1317NP-561L        | 561 | 560 $\mu$ H $\pm$ 15% | 0.59 (0.47)                        | 1.25             | 1.05      | 1.10             | -0018  |
| 15  | RCP1317NP-681L        | 681 | 680 $\mu$ H $\pm$ 15% | 0.78 (0.62)                        | 1.12             | 0.95      | 1.00             | -0019  |
| 16  | RCP1317NP-821L        | 821 | 820 $\mu$ H $\pm$ 15% | 0.95 (0.76)                        | 1.02             | 0.85      | 0.85             | -0020  |
| 17  | RCP1317NP-1 $\phi$ 2L | 102 | 1.0mH $\pm$ 15%       | 1.18 (0.94)                        | 0.90             | 0.70      | 0.82             | -0021  |
| 18  | RCP1317NP-122L        | 122 | 1.2mH $\pm$ 15%       | 1.28 (1.07)                        | 0.80             | 0.65      | 0.74             | -0022  |
| 19  | RCP1317NP-152L        | 152 | 1.5mH $\pm$ 15%       | 1.40 (1.16)                        | 0.72             | 0.60      | 0.72             | -0023  |
| 20  | RCP1317NP-182L        | 182 | 1.8mH $\pm$ 15%       | 2.00 (1.70)                        | 0.68             | 0.56      | 0.58             | -0024  |
| 21  | RCP1317NP-222L        | 222 | 2.2mH $\pm$ 15%       | 2.28 (1.90)                        | 0.62             | 0.52      | 0.52             | -0025  |
| 22  | RCP1317NP-272L        | 272 | 2.7mH $\pm$ 15%       | 3.07 (2.56)                        | 0.58             | 0.50      | 0.48             | -0026  |
| 23  | RCP1317NP-332L        | 332 | 3.3mH $\pm$ 15%       | 3.31 (2.76)                        | 0.51             | 0.45      | 0.45             | -0027  |
| 24  | RCP1317NP-392L        | 392 | 3.9mH $\pm$ 15%       | 4.52 (3.77)                        | 0.47             | 0.42      | 0.42             | -0028  |
| 25  | RCP1317NP-472L        | 472 | 4.7mH $\pm$ 15%       | 5.02 (4.18)                        | 0.43             | 0.37      | 0.37             | -0029  |

1 測定周波数 インダクタンス at 1kHz

2 ( )内は、標準値とする。

3 直流重畳許容電流：直流重畳特性について、インダクタンスが初期値より65%となる電流値。

4 温度上昇許容電流：通電時、コイルの温度上昇が T=40 になる電流値。(Ta=20 を基準とする。)

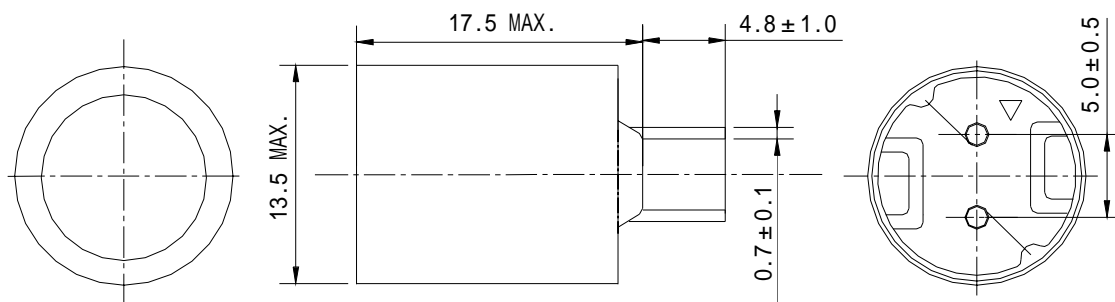
- 3 . 保存温度範囲 - 40 ~ + 100  
 使用温度範囲 - 40 ~ + 100 (コイルの発熱を含む。)

# SPECIFICATION

TYPE  
RCP1317

## 1 . APPEARANCE

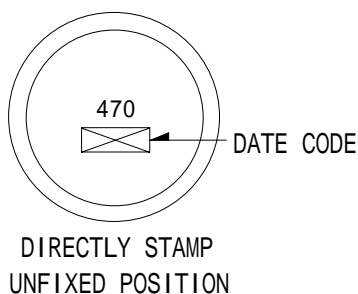
### 1-1 . DIMENSIONS(mm)



\* DIMENSION DOES NOT INCLUDE SOLDER USED ON COIL.

\* PIN PITCH SHALL BE MEASURED AT THE ROOT OF TERMINAL

### 1-2 . STAMP (E.G.)

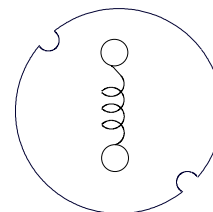


**RoHS**

compliance  
Cd:Max.0.01wt%  
others:Max.0.1wt%

## 2 . COIL SPECIFICATION

### 2-1 . CONNECTION (BOTTOM VIEW)



### 2-2 . ELECTRICAL CHARACTERISTICS

| NO. | PART NO.       | STAMP | INDUCTANCE<br><WITHIN><br>1 | D.C.R.( )<br><MAX.><br>(at 20 )<br>2 | DC SUPERPOSITION<br>PERMISSION CURRENT<br>3 |           | TEMPERATURE<br>RISE<br>PERMISSION<br>CURRENT<br>(A)<br>4 | SUMIDA<br>CODE |
|-----|----------------|-------|-----------------------------|--------------------------------------|---|-----------|--|----------------|
|     |                |       |                             |                                      | (at 20 )                                    | (at 100 ) |  |                |
| 01  | RCP1317NP-33ØM | 330   | 33 $\mu$ H $\pm$ 20%        | 58m (46m)                            | 4.80  | 4.40      | 3.60   |                |
| 02  | RCP1317NP-47ØM | 470   | 47 $\mu$ H $\pm$ 20%        | 69m (55m)                            | 4.30  | 3.80      | 3.30   |                |
| 03  | RCP1317NP-68ØM | 680   | 68 $\mu$ H $\pm$ 20%        | 101m (81m)                           | 3.30  | 3.00      | 2.60   |                |
| 04  | RCP1317NP-82ØM | 820   | 82 $\mu$ H $\pm$ 20%        | 110m (88m)                           | 3.10  | 2.70      | 2.50   |                |
| 05  | RCP1317NP-1Ø1M | 101   | 100 $\mu$ H $\pm$ 20%       | 125m (100m)                          | 2.80  | 2.50      | 2.30   |                |

# SPECIFICATION

|                 |
|-----------------|
| TYPE<br>RCP1317 |
|-----------------|

## 2-2 . ELECTRICAL CHARACTERISTICS

| NO. | PART NO.              | STAMP | INDUCTANCE<br><WITHIN><br>1 | D.C.R.( )<br><MAX.><br>(at 20 )<br>2 | DC SUPERPOSITION<br>PERMISSION CURRENT<br>3 |           | TEMPERATURE<br>RISE<br>PERMISSION<br>CURRENT<br>(A)<br>4 | SUMIDA<br>CODE |
|-----|-----------------------|-------|-----------------------------|--------------------------------------|---|-----------|--|----------------|
|     |                       |       |                             |                                      | (at 20 )                                    | (at 100 ) |  |                |
| 06  | RCP1317NP-121L        | 121   | 120 $\mu$ H $\pm$ 15%       | 139m (116m)                          | 2.60  | 2.30      | 2.20   |                |
| 07  | RCP1317NP-151L        | 151   | 150 $\mu$ H $\pm$ 15%       | 195m (156m)                          | 2.40  | 2.10      | 1.90   |                |
| 08  | RCP1317NP-181L        | 181   | 180 $\mu$ H $\pm$ 15%       | 213m (171m)                          | 2.20  | 1.80      | 1.80   |                |
| 09  | RCP1317NP-221L        | 221   | 220 $\mu$ H $\pm$ 15%       | 278m (223m)                          | 1.90  | 1.70      | 1.60   |                |
| 10  | RCP1317NP-271L        | 271   | 270 $\mu$ H $\pm$ 15%       | 0.33 (0.26)                          | 1.70  | 1.60      | 1.55   |                |
| 11  | RCP1317NP-331L        | 331   | 330 $\mu$ H $\pm$ 15%       | 0.36 (0.29)                          | 1.60  | 1.40      | 1.50   |                |
| 12  | RCP1317NP-391L        | 391   | 390 $\mu$ H $\pm$ 15%       | 0.44 (0.35)                          | 1.45  | 1.28      | 1.30   |                |
| 13  | RCP1317NP-471L        | 471   | 470 $\mu$ H $\pm$ 15%       | 0.53 (0.42)                          | 1.35  | 1.17      | 1.15   |                |
| 14  | RCP1317NP-561L        | 561   | 560 $\mu$ H $\pm$ 15%       | 0.59 (0.47)                          | 1.25  | 1.05      | 1.10   |                |
| 15  | RCP1317NP-681L        | 681   | 680 $\mu$ H $\pm$ 15%       | 0.78 (0.62)                          | 1.12  | 0.95      | 1.00   |                |
| 16  | RCP1317NP-821L        | 821   | 820 $\mu$ H $\pm$ 15%       | 0.95 (0.76)                          | 1.02  | 0.85      | 0.85   |                |
| 17  | RCP1317NP-1 $\phi$ 2L | 102   | 1.0mH $\pm$ 15%             | 1.18 (0.94)                          | 0.90  | 0.70      | 0.82   |                |
| 18  | RCP1317NP-122L        | 122   | 1.2mH $\pm$ 15%             | 1.28 (1.07)                          | 0.80  | 0.65      | 0.74   |                |
| 19  | RCP1317NP-152L        | 152   | 1.5mH $\pm$ 15%             | 1.40 (1.16)                          | 0.72  | 0.60      | 0.72   |                |
| 20  | RCP1317NP-182L        | 182   | 1.8mH $\pm$ 15%             | 2.00 (1.70)                          | 0.68  | 0.56      | 0.58   |                |
| 21  | RCP1317NP-222L        | 222   | 2.2mH $\pm$ 15%             | 2.28 (1.90)                          | 0.62  | 0.52      | 0.52   |                |
| 22  | RCP1317NP-272L        | 272   | 2.7mH $\pm$ 15%             | 3.07 (2.56)                          | 0.58  | 0.50      | 0.48   |                |
| 23  | RCP1317NP-332L        | 332   | 3.3mH $\pm$ 15%             | 3.31 (2.76)                          | 0.51  | 0.45      | 0.45   |                |
| 24  | RCP1317NP-392L        | 392   | 3.9mH $\pm$ 15%             | 4.52 (3.77)                          | 0.47  | 0.42      | 0.42   |                |
| 25  | RCP1317NP-472L        | 472   | 4.7mH $\pm$ 15%             | 5.02 (4.18)                          | 0.43  | 0.37      | 0.37   |                |

1: MEASURED FREQUENCY INDUCTANCE : at 1 kHz

2 ( ) TYPICAL VALUE.

3: DC SUPERPOSITION PERMISSION CURRENT: THE VALUE OF D.C. CURRENT WHEN THE INDUCTANCE IS OVER 65% OF THE INITIAL VALUE.

4: TEMPERATURE RISE PERMISSION CURRENT: THE DC CURRENT WHEN COIL ' S SELF TEMPERATURE RISE IS 40 .  
(Ta=20 )

3 . STORAGE TEMPERATURE RANGE : - 40 ~ +100

OPERATING TEMPERATURE RANGE: - 40 ~ +100 (INCLUDING SELF TEMPERATURE RISE)