

## High Power Chipped - EOC - 20 Series

### Preliminary Data

#### Features

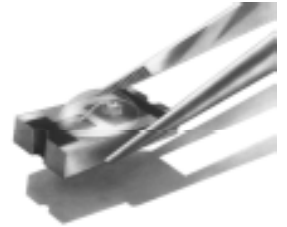
<b>Directive characteristic</b>	110° (optional with lens 40°)
<b>Size</b>	3.2 (L) x 2.8 (W)
<b>Soldering patterns</b>	Gold plated
<b>Technology</b>	AllnGaP, InGaN
<b>Tape &amp; Reel</b>	8 mm blister tape with 2000pcs./reel Ø 180mm or 8000 pcs./reel Ø 330mm
<b>Grouping parameter</b>	sorted into luminous intensity groups, color groups or color coordinates
<b>ESD resistance voltage</b>	up to 2 kV
<b>Assembly methods</b>	Suitable for all SMT assembly methods
<b>Soldering methods</b>	IR reflow soldering and TTW soldering

#### Applications

Substitution of incandescent lamps  
Signal and indicators  
Marker lights  
Indoor and outdoor displays  
Backlighting  
Interior and exterior automotive lighting

#### Special features

The SMT LED elements of the EOC-20 series operate from 50 mA to 200 mA:  
For optimal use of the EOC-20 SMT LEDs please ask for our special assistance regarding the PCB layout to optimise the thermal management.  
Please see the fields of application from the ordering code.  
With an optimal thermal management power dissipation up to 1500 mW can be realised.



### **Electro-optical Characteristics**

Type	Emission colour	$\lambda_D$ (nm) colour coordinates	$I_F$ [ mA ]	$I_V$ [ mcd ]		$\Phi_V$ [ mlm ] typ.	2 $\varphi$ [ deg. ]
				min.	typ		
EOC-20 UW 50	white	0.32 / 0.33	50	200 - 400	880	110	
EOC-20 MW 50	white	0.32 / 0.33	50	600 - 820	1800	110	
EOC-20 MB 460 50	blue	460	50	100 - 250	550	110	
EOC-20 MB 470 50	blue	470	50	125 - 300	660	110	
EOC-20 UG 505 50	green	505	50	210 - 500	1100	110	
EOC-20 UG 525 50	green	525	50	210 - 500	1100	110	
EOC-20 HYG 50	green	572	50	125 - 220	480	110	
EOC-20 HY 50	yellow	590	50	260 - 500	1100	110	
EOC-20 SUD 50	orange	605	50	260 - 600	1320	110	
EOC-20 HD 50	orange	615	50	260 - 600	1320	110	
EOC-20 HSD 50	red	625	50	260 - 500	1100	110	
EOC-20 HR 50	red	632	50	140 - 280	610	110	
EOC-20 UW 100	white	0.32 / 0.33	100	300 - 600	1320	110	
EOC-20 MW 100	white	0.32 / 0.33	100	600 - 1250	2750	110	
EOC-20 MB 460 100	blue	460	100	100 - 250	550	110	
EOC-20 MB 470 100	blue	470	100	125 - 300	660	110	
EOC-20 UG 505 100	green	505	100	315 - 750	1650	110	
EOC-20 UG 525 100	green	525	100	315 - 750	1650	110	
EOC-20 HYG 100	green	572	100	125 - 325	710	110	
EOC-20 HY 100	yellow	590	100	400 - 750	1650	110	
EOC-20 SUD 100	orange	605	100	400 - 900	1980	110	
EOC-20 HD 100	orange	615	100	400 - 900	1980	110	
EOC-20 HSD 100	red	625	100	400 - 750	1650	110	
EOC-20 HR 100	red	632	100	200 - 425	930	110	
EOC-20 UW 200	white	0.32 / 0.33	200	600 - 1200	2640	110	
EOC-20 MW 200	white	0.32 / 0.33	200	1200 - 2500	5500	110	
EOC-20 MB 460 200	blue	460	200	200 - 500	1100	110	
EOC-20 MB 470 200	blue	470	200	250 - 600	1320	110	
EOC-20 UG 505 200	green	505	200	630 - 1500	3300	110	
EOC-20 UG 525 200	green	525	200	630 - 1500	3300	110	
EOC-20 HYG 200	green	572	200	250 - 650	1430	110	
EOC-20 HY 200	yellow	590	200	800 - 1500	3300	110	
EOC-20 SUD 200	orange	605	200	800 - 1500	3300	110	
EOC-20 HD 200	orange	615	200	800 - 1500	3300	110	
EOC-20 HSD 200	red	625	200	800 - 1500	3300	110	