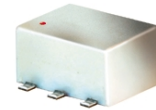


# Surface Mount Frequency Mixer

## ADE-2+ ADE-2

Level 7 (LO Power +7 dBm) 5 to 1000 MHz



### Maximum Ratings

Operating Temperature	-40°C to 85°C
Storage Temperature	-55°C to 100°C
RF Power	50mW
IF Current	40mA

### Pin Connections

LO	6
RF	3
IF	2
GROUND	1,4,5

### Features

- excellent L-R isolation, 47 dB typ.
- low profile package
- aqueous washable
- protected by U.S. Patent 6,133,525

CASE STYLE: CD542  
PRICE: \$1.99 ea. QTY (100)

**+ RoHS compliant in accordance with EU Directive (2002/95/EC)**

The +Suffix identifies RoHS Compliance. See our web site for RoHS Compliance methodologies and qualifications.

### Applications

- cellular
- PCS

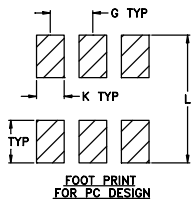
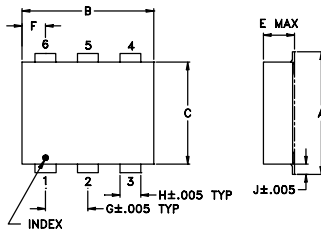
### Electrical Specifications

FREQUENCY (MHz)	CONVERSION LOSS (dB)	LO-RF ISOLATION (dB)			LO-IF ISOLATION (dB)			IP3 at center band (dBm)										
		L	M	U	L	M	U											
5-1000	DC-1000	6.67	0.26	8.0	9.5	60	40	47	25	32	22	62	35	45	25	32	20	20

1 dB COMP.: +1 dBm typ.

L = low range [ $f_l$  to  $10 f_l$ ] M = mid range [ $10 f_l$  to  $f_u/2$ ] U = upper range [ $f_u/2$  to  $f_u$ ]  
m = mid band [ $2 f_l$  to  $f_u/2$ ]

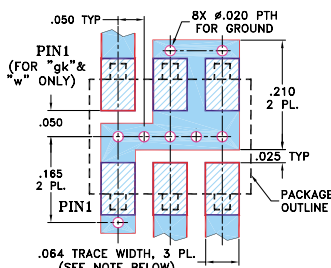
### Outline Drawing



### Outline Dimensions (inch/mm)

A	B	C	D	E	F	G
.280	.310	.220	.100	.112	.055	.100
7.11	7.87	5.59	2.54	2.84	1.40	2.54
H	J	K	L	wt		
.030	.030	.065	.300	grams		
0.76	0.76	1.65	7.62	0.20		

### Demo Board MCL P/N: TB-03 Suggested PCB Layout (PL-052)



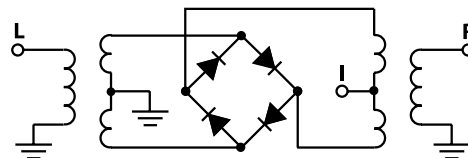
- NOTES: 1. TRACE WIDTH IS SHOWN FOR ROGERS R04350B WITH DIELECTRIC THICKNESS .030" ± .002"; COPPER: 1/2 OZ. EACH SIDE. FOR OTHER MATERIALS TRACE WIDTH MAY NEED TO BE MODIFIED.  
2. BOTTOM SIDE OF THE PCB IS CONTINUOUS GROUND PLANE.

- DENOTES PCB COPPER LAYOUT WITH SMOBC (SOLDER MASK OVER BARE COPPER)
- DENOTES COPPER LAND PATTERN FREE OF SOLDER MASK

### Typical Performance Data

Frequency (MHz)		Conversion Loss (dB)	Isolation L-R (dB)	Isolation L-I (dB)	VSWR RF Port (:1)	VSWR LO Port (:1)
RF	LO	LO +7dBm	LO +7dBm	LO +7dBm	LO +7dBm	LO +7dBm
5.0	35.0	7.24	67.56	56.62	1.74	2.77
14.0	44.0	6.89	66.00	55.21	1.40	2.76
23.0	53.0	6.84	64.66	53.92	1.35	2.75
32.0	62.0	6.85	63.45	52.89	1.34	2.74
41.0	71.0	6.86	62.35	51.97	1.33	2.73
50.0	80.0	6.83	61.27	51.17	1.33	2.72
200.0	230.0	6.78	50.90	44.28	1.35	2.79
350.0	380.0	6.78	45.63	39.09	1.37	2.87
500.0	530.0	6.85	42.11	35.34	1.40	2.76
502.5	532.5	6.81	42.09	35.27	1.41	2.76
586.0	616.0	6.87	40.83	32.80	1.44	2.77
632.0	662.0	6.91	39.73	32.12	1.47	2.92
678.0	708.0	6.96	39.35	31.50	1.47	2.90
724.0	754.0	6.98	38.67	30.57	1.50	3.11
770.0	800.0	7.08	37.90	29.63	1.52	3.08
816.0	846.0	7.09	37.06	28.64	1.52	3.26
862.0	892.0	7.14	36.56	28.19	1.54	3.24
908.0	938.0	7.22	35.71	27.46	1.53	3.28
954.0	984.0	7.26	35.35	26.91	1.49	3.28
1000.0	1030.0	7.37	35.01	26.18	1.50	3.23

### Electrical Schematic



**Mini-Circuits**

INTERNET <http://www.minicircuits.com>

P.O. Box 350166, Brooklyn, New York 11235-0003 (718) 934-4500 Fax (718) 332-4661

Distribution Centers NORTH AMERICA 800-654-7949 • 417-335-5935 • Fax 417-335-5945 • EUROPE 44-1252-832600 • Fax 44-1252-837010

Mini-Circuits ISO 9001 & ISO 14001 Certified



REV. A  
M98898  
ADE-2  
RVN/TD/CP/AM  
060308  
Page 1 of 2

# Performance Charts

# ADE-2+ ADE-2

