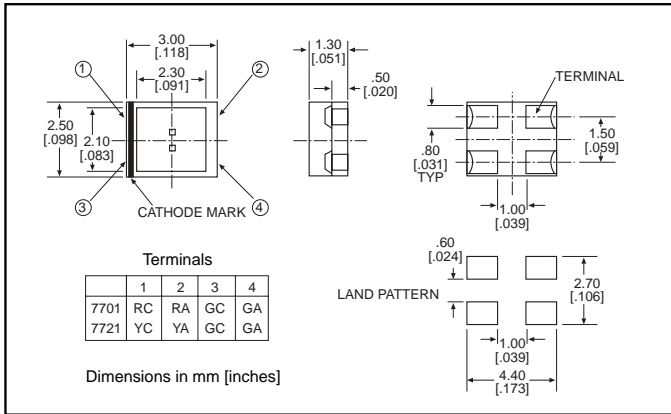




Surface Mount LED Bi-Color



1

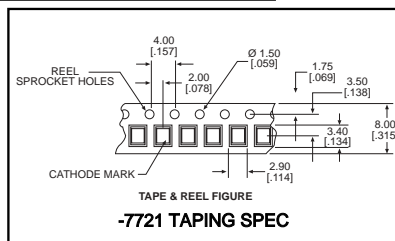
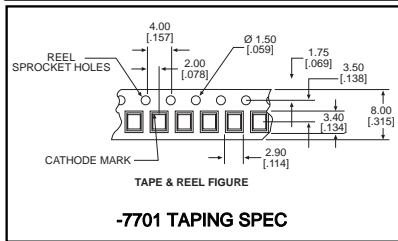


PART NO.*
597-7701-5xx
597-7721-5xx

COLOR
Red/Green
Yellow/Green

Features

- Compatible with automatic placement equipment
- Compatible with infrared reflow processes
- Packaged on 8mm tape, 7" reels (meets EIA-481-1 standard)
- Helps to eliminate mixed technology PC board processing
- Compatible with Dialight's Optopipe™ Series light pipes



***ORDERING INFORMATION**

597-77x1-5xx

packaging option

02	20 pieces on tape
07	7" reel, 2500 pcs/reel

ABSOLUTE MAXIMUM RATINGS ($T_A=25^\circ\text{C}$)

	Red/Green -7701	Yellow/Green -7721
Power Dissipation (mW)	60/60	60/60
Derating (mA/°C) From 25°C	.4/.3	.4/.3
Forward Current (mA)	25/25	25/25
Peak Current (mA) Pulse width = 10 μs	60/60	60/60
Operating Temperature (°C)	-30/+85	-25/+80
Storage Temperature (°C)	-40/+85	-30/+85
Soldering Profile	240°C to 245°C, 5 seconds max.	

Solder Adherence per MIL-STD-202E, Method 208C

OPERATING CHARACTERISTICS ($T_A=25^\circ\text{C}$)

		Red/Green -7701	Yellow/Green -7721
Luminous Intensity (mcd)	Min.	3.6/9	3.6/9
	Typical	6.3/20	6.3/20
Peak Wavelength (nm)	Typical	650/570	585/563
Viewing Angle ($2\Theta_{1/2}$)	Typical	104°	104°
Forward Voltage (V)	Typical	2/2.2	2.1/2.2
	Max.	2.8/2.8	2.8/2.8
Reverse Current (μA) ($V_R=4\text{V}$)		100/100	100/100

$\Theta_{1/2}$ is the off axis angle at which the luminous intensity is half the axial luminous intensity