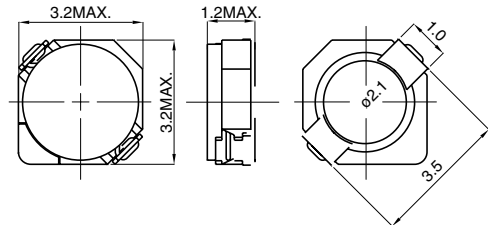
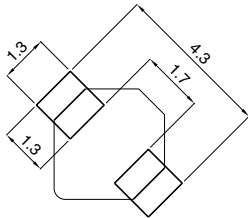
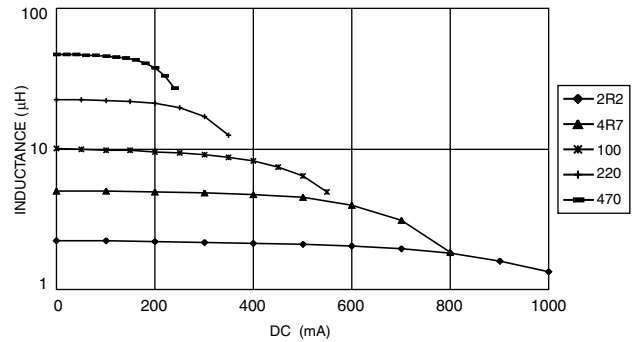


**NEW**

# CDRH2D11

**OUTLINE**

It is suitable for the smaller footprint and lower profile demand for chopper DC/DC converter circuit.  
 This type is the smaller size and lower profile type of CDRH2D16. (H : Max.1.2 mm).  
 Application is DC/DC converter for LCD of PDA.

**DIMENSIONS (mm)**

**LAND PATTERNS (mm)**

**SATURATION CURRENT**

**SPECIFICATIONS**

Parts No.	Stamp	Inductance <WITHIN>*1 (at 100kHz)	D.C.R.(mΩ)<MAX.> (at 20°C)*2	DC Superimposition(A)*3		Temperature rise(A) *4
				(at 20°C)	(at 100°C)	
CDRH2D11-1R5NC	A	1.5µH±30%	68(54)	0.90	0.68	1.48
CDRH2D11-2R2NC	C	2.2µH±30%	98(78)	0.78	0.58	1.27
CDRH2D11-3R3NC	E	3.3µH±30%	123(98)	0.60	0.45	1.02
CDRH2D11-4R7NC	G	4.7µH±30%	170(135)	0.50	0.37	0.88
CDRH2D11-6R8NC	I	6.8µH±30%	260(210)	0.44	0.33	0.88
CDRH2D11-100NC	K	10.0µH±30%	400(320)	0.35	0.26	0.65

\*1: Measurement frequency of inductance : at 100kHz. 1V

\*2: ( ) is typical value.

\*3: DC superimposition : It indicates the D.C. current value when inductance value become more than 65% of the nominal one.

\*4: The temperature rise : The value of D.C. current when temperature rise is Δt=40°C (Ta=20°C).

**Sales Contact**

**North America**  
 1701 Golf Road, Tower 3  
 Suite 400, Rolling  
 Meadows, IL 60008, USA  
 Tel: (1) 847 545-6700  
 Fax: (1) 847 545-6720

**Japan**  
 Nihonbashi- ingyocho  
 2-Chome, Chuo-ku,  
 Tokyo, Japan  
 Tel: (81) 03 3667-3301  
 Fax: (81) 03 3667-3456

**Hong Kong**  
 14/F, Eastern Centre,  
 1065 King's Road, Quarry  
 Road, Hong Kong  
 Tel: (852) 2880-6688  
 Fax: (852) 2880-9596

**Taiwan**  
 No. 171, Futech Street,  
 Hsin-I, Taipei, Taiwan,  
 ROC  
 Tel: (886) 2 2726-2177  
 Fax: (886) 2 2728-2726

**Singapore**  
 996 Bendemeer  
 Road #04-05 to 06  
 Singapore 339944  
 Tel: (65) 2963-388  
 Fax: (65) 2963-390

**Europe**  
 Chaussee de Tervuren113A,  
 1160 Brussels  
 Belgium  
 Email:  
 europe.sales@hk.sumida.com