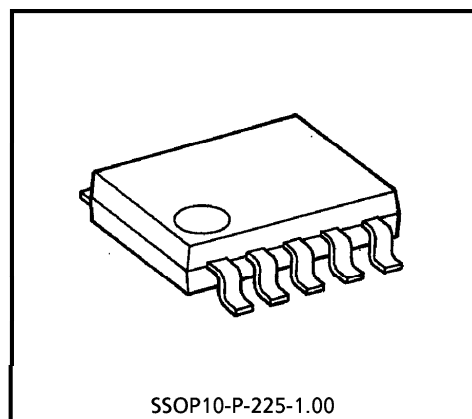


# TA8462F

## FAN MOTOR DRIVER IC

The TA8462F is a 2 phase half-wave hall motor driver IC. This IC is best suited for the fan motor driving. The output current of this IC is 1.5 A (peak) and all functions needed for fan motor driving have been incorporated into a 1 chip, enabling it to largely reduce peripheral parts and a space, thus realizing down-sizing. Further, the TA8462F is provided with the FG output pin (outputs pulses proportional to the motor speed) and the RD output pin (outputs the motor ON/OFF statuses).

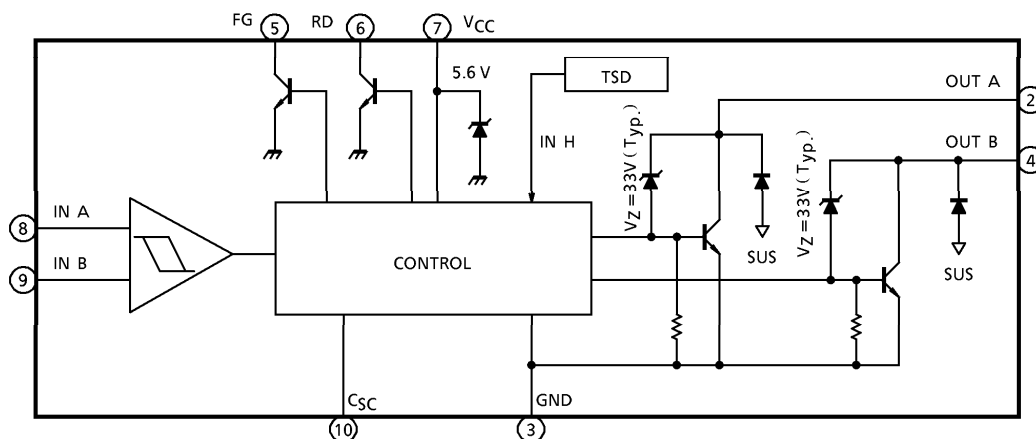


SSOP10-P-225-1.00  
Weight : 0.09 g (Typ.)

### FEATURES

- Built-in Automatic Self Rotation Recovery Circuit After Release of Motor Locking.
- Thermal Shutdown Circuit Incorporated.
- Operating Voltage : 4~15 V
- Recommended Operating Voltage :  $V_{CC} = 5 V, 12 V$
- No  $V_{CC}$ -GND Reverse Connection Preventive Diode Required.

### BLOCK DIAGRAM



980910EBA2

- TOSHIBA is continually working to improve the quality and the reliability of its products. Nevertheless, semiconductor devices in general can malfunction or fail due to their inherent electrical sensitivity and vulnerability to physical stress. It is the responsibility of the buyer, when utilizing TOSHIBA products, to observe standards of safety, and to avoid situations in which a malfunction or failure of a TOSHIBA product could cause loss of human life, bodily injury or damage to property. In developing your designs, please ensure that TOSHIBA products are used within specified operating ranges as set forth in the most recent products specifications. Also, please keep in mind the precautions and conditions set forth in the TOSHIBA Semiconductor Reliability Handbook.
- The products described in this document are subject to the foreign exchange and foreign trade laws.
- The information contained herein is presented only as a guide for the applications of our products. No responsibility is assumed by TOSHIBA CORPORATION for any infringements of intellectual property or other rights of the third parties which may result from its use. No license is granted by implication or otherwise under any intellectual property or other rights of TOSHIBA CORPORATION or others.
- The information contained herein is subject to change without notice.

## PIN FUNCTION

PIN No.	SYMBOL	FUNCTIONAL DESCRIPTION
1	NC	Non connection
2	OUT A	Output terminal
3	GND	GND terminal
4	OUT B	Output terminal
5	FG	Rotation speed output terminal
6	RD	Rotation detect output terminal
7	V <sub>CC</sub>	Power voltage supply terminal
8	IN A	Hall input terminal
9	IN B	Hall input terminal
10	C <sub>SC</sub>	Lock protector time constant determined terminal

- FG and RD outputs

Both the FG and RD outputs are the open collector outputs.

The FG output is pulse proportional to the number of revolutions (the cycle is the same as OUT B) and the RD output is at the GND level (actually, at V<sub>sat</sub>(RD) level) when the motor is being driven and the RD output at the potential level that is to be applied to the RD terminal as shown in Figure 2 is output when the motor is kept restrained.

- Automatic self rotation recovery circuit

If the rotation of the fan motor is forced to stop by any physical power, the driving coil may be burnt as inducing voltage caused when the motor is running disappears and large current flows to the driving coil.

Therefore, it becomes necessary to provide the fan motor with a circuit to prevent the driving coil from being burned by detecting the forced stop of the motor rotation from the outside by some method and a circuit to automatically rotate the motor when it is released from the restraint.

The TA8462F is an IC that has cleared the above problems by the burning preventive automatic return circuit.

This operation is shown in Figure 1.

The capacitor C<sub>SC</sub> connected to the C<sub>SC</sub> terminal is charged by the charging current I<sub>SL</sub> (6.3 μA Typ.) and its potential rises as shown below :

$$V = \frac{1}{C_{SC}} \int I_{SL} dt$$

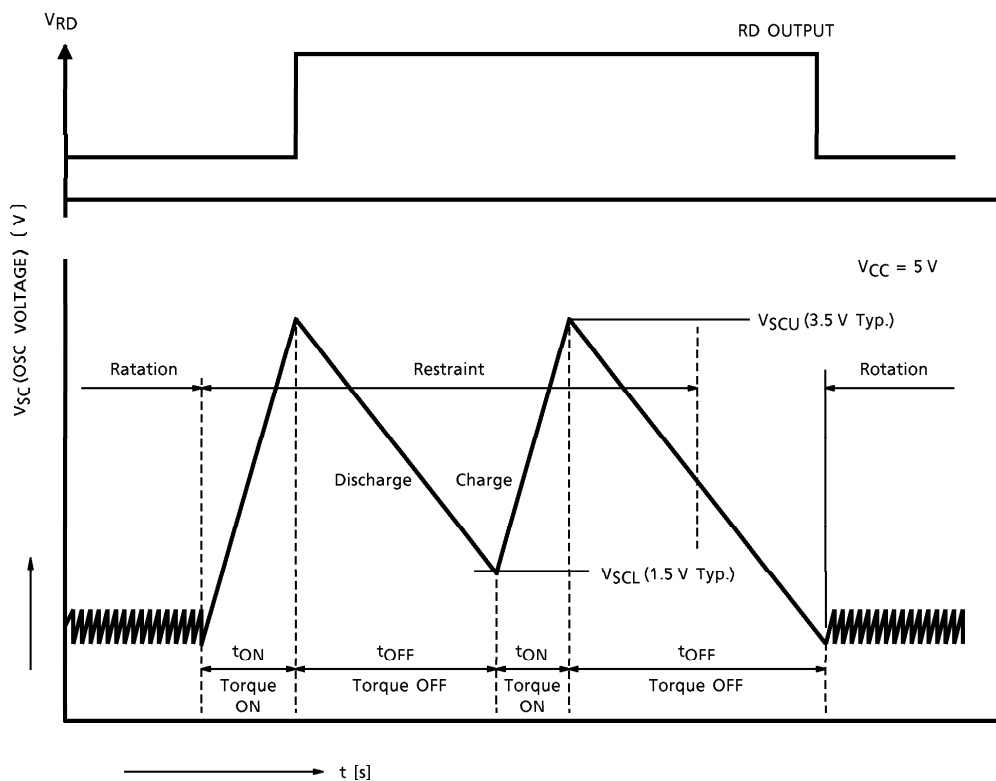


Fig.1 Auto mAtic Self Rotation Recovery Circuit Operation

When the motor is rotating, it is charged and discharged repeatedly by trigger pulse but if the motor rotation is physically restrained,  $C_{SC}$  discharge by trigger pulse is stopped and the potential further increases. During this period, current flows continuously to the motor. If  $V_{SC}$  (OSC potential) reaches  $V_{SCU}$  (3.5V Typ.), discharge starts slowly and at the same time, the output is turned OFF to cur off current flowing to the motor. When the  $V_{SC}$  potential reaches  $V_{SCCL}$  (1.5V Typ.), the output is turned ON to allow current flow to the motor and torque is generated.

As long as the motor rotation is kept restrained, this operation is repeated and the output is turned ON/OFF at a ratio of nearly 1 : 5.

By this operation, the motor is heated and cooled and its temperature rise can be suppressed to a certain level. If the motor is released from the above restraint, the motor is started to run again by the generated torque and is continuously rotated by the generated trigger pulse.

## MAXIMUM RATINGS (Ta = 25°C)

CHARACTERISTIC	SYMBOL	RATING	UNIT
Output Terminal Breakdown Voltage	V <sub>CER</sub>	35	V
Output Current (PEAK)	I <sub>O</sub> (PEAK)	1.5 (Note 1)	A
FG Output Current (PEAK)	I <sub>FG</sub> (PEAK)	10 (Note 1)	mA
RD Output Current (PEAK)	I <sub>RD</sub> (PEAK)	10 (Note 1)	mA
Hall Input Voltage	V <sub>HM</sub>	300 (Note 2)	mV
Power Dissipation	P <sub>D</sub>	735 (Note 3)	mW
Operating Temperature	T <sub>opr</sub>	-30~85	°C
Storage Temperature	T <sub>stg</sub>	-55~150	°C

(Note 1) t = 0.1 s

(Note 2) T<sub>j</sub> = -25~150°C

(Note 3) This value is obtained by 50 × 50 × 1.6 mm PCB mounting occupied in excess of 30% of copper area.

ELECTRICAL CHARACTERISTICS (Ta = 25°C, V<sub>CC</sub> = 12 V, R<sub>VCC</sub> = 200 Ω, C<sub>SC</sub> = 1.0 μF)

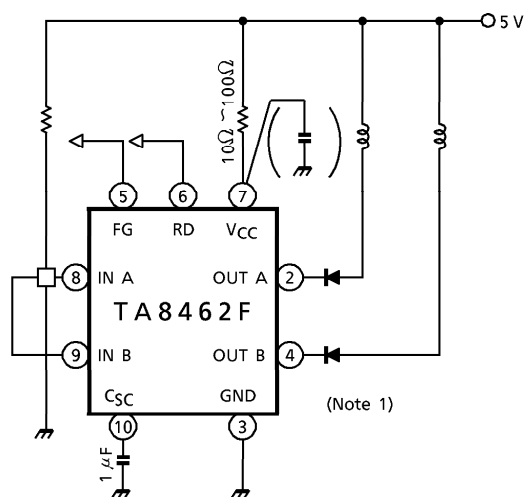
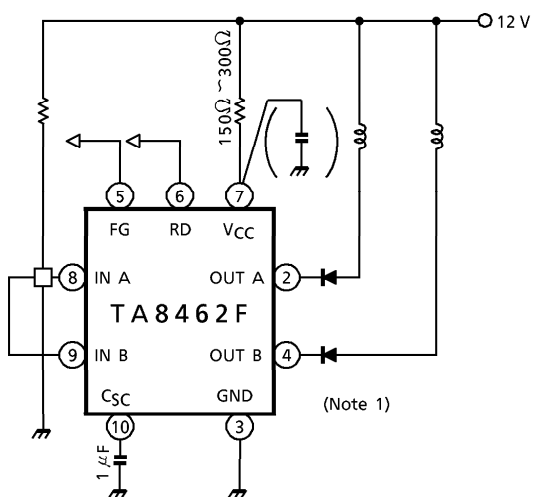
CHARACTERISTIC	SYMBOL	TEST CIRCUIT	TEST CONDITION	MIN.	TYP.	MAX.	UNIT	
Supply Current	I <sub>CC</sub>	—	V <sub>CC</sub> = 5 V, R <sub>VCC</sub> = 0 Ω, Output open	A : ON	—	8.7	13.0	mA
			B : ON	—	7.7	12.0		
			V <sub>CC</sub> = 12 V, R <sub>VCC</sub> = 200 Ω, Output open	A : ON	—	28	35	
			B : ON	—	28	35		
Output Saturation Voltage	V <sub>SAT</sub>	—	I <sub>O</sub> = 0.2 A, T <sub>j</sub> = 25°C	—	0.8	1.0	V	
			I <sub>O</sub> = 1.0 A, T <sub>j</sub> = 25°C	—	1.15	1.6		
Output Terminal Clamp Voltage	V <sub>CER</sub>	—	—	31	—	35	V	
Automatic Self Rotation Recovery Circuit	Charge Current	I <sub>c</sub>	—	C <sub>SC</sub> = GND	3.0	6.2	8.2	μA
	Discharge Current	I <sub>d</sub>	—	C <sub>SC</sub> = 4 V	0.5	1.15	1.3	
	Output OFF Voltage	V <sub>SCU</sub>	—	V <sub>CC</sub> = 5 V	—	3.5	—	V
	Output ON Voltage	V <sub>SCL</sub>	—	V <sub>CC</sub> = 5 V	—	1.5	—	
	Duty	DR	—	I <sub>d</sub> /I <sub>c</sub> = t <sub>OFF</sub> /t <sub>ON</sub>	3	5	8	s
	ON Time	t <sub>ON</sub>	—	—	—	0.35	—	
	OFF Time	t <sub>OFF</sub>	—	—	—	1.75	—	

CHARACTERISTIC		SYMBOL	TEST CIR-CUIT	TEST CONDITION	MIN.	TYP.	MAX.	UNIT
Hall Amp.	Sensitivity	$V_{HS}$	—	Include offset / hysteresis	10	—	—	mV
	Hysteresis	$V_{HH}$	—	—	—	2.5	—	
	Operating DC Potential	CMR	—	—	0	~	3	V
Supply Zener Voltage		$V_Z$	—	—	5.4	6.0	6.3	V
FG Output Saturation Voltage		$V_{sat}(FG)$	—	$I_{FG} = 5\text{ mA}$	—	0.2	0.4	V
RD Output Saturation Voltage		$V_{sat}(RD)$	—	$I_{RD} = 5\text{ mA}$	—	0.2	0.4	V
Thermal Shutdown Operating Temperature		$T_{SD}$	—	$T_j$	150	—	—	$^{\circ}\text{C}$

**APPLICATION CIRCUIT**

- 12 V use

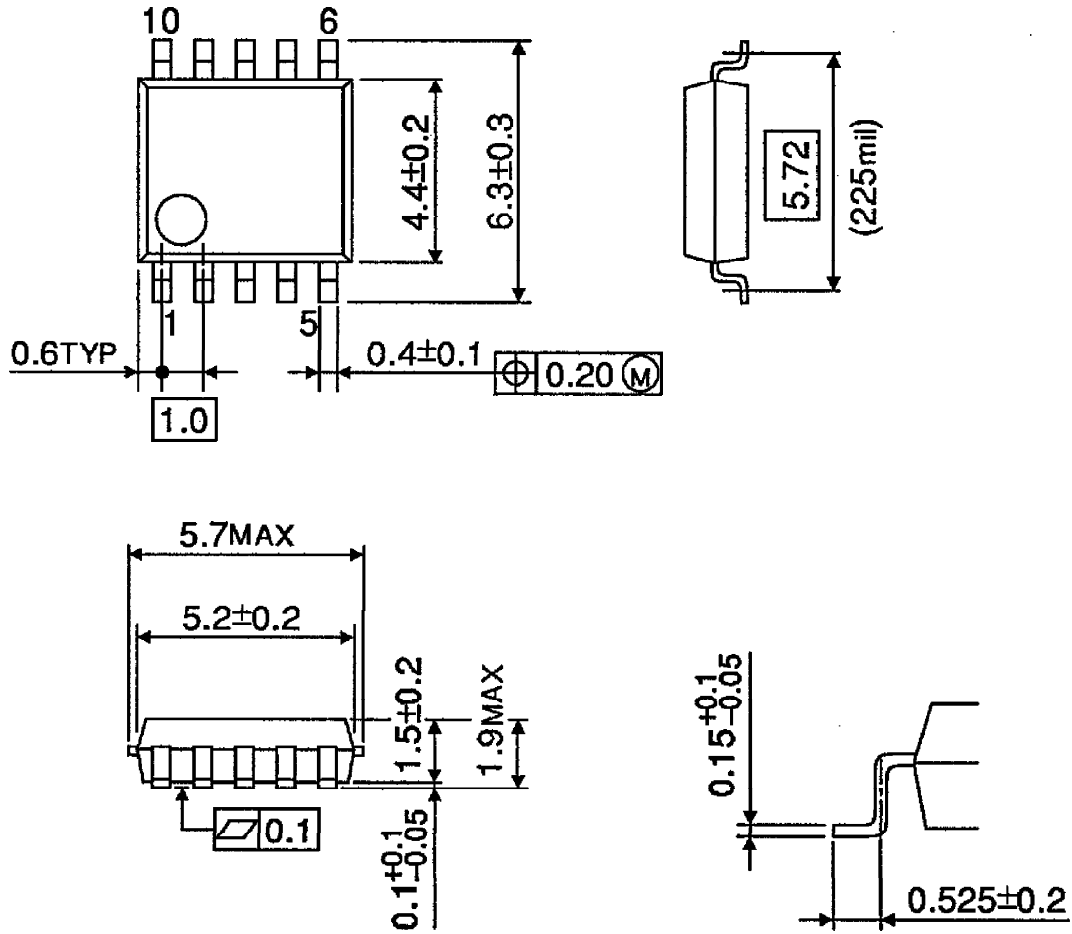
- 5 V use



- (Note 1) In order to prevent the mutual induction of a motor, connect a additional diode between each output to motor.
- (Note 2) Utmost care is necessary in the design of the output line,  $V_{CC}$  and GND line since IC may be destroyed due to short-circuit between outputs, air contamination fault, or fault by improper grounding.

**OUTLINE DRAWING**  
SSOP10-P-225-1.00

Unit : mm



Weight : 0.09 g (Typ.)