



# E-Series Surface Mount Mixer 1800-2000 MHz

## Features

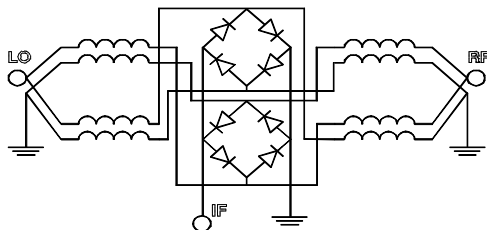
- LO Power +17 dBm
- Up to +14 dBm RF
- Surface Mount



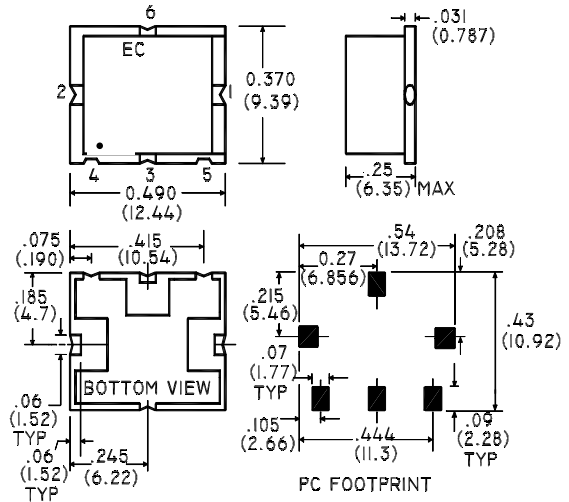
## Description

M/A-COM's MAMXES0009 is a Low Cost, Passive Double Double Balanced Mixer. Constructed using very broad band ferrite balun transformers and matched silicon schottky diodes, it's performance is especially suited to high dynamic range receivers. Given it's high 1dB compression point, the MAMXES0009 is also suitable for Transmitter upconversion at any frequency up to 2.5GHz.

## Schematic



## SM-2 Package



Part Number	Packaging
MAMXES0009	Tube
MAMXES0009TR	Tape and Reel

## Electrical Specifications @ +25°C

Parameter	Units	Minimum	Typical	Maximum	Mean (x)	Sigma (σ)
Frequency Range	1800-2000MHz	—	—	—	—	—
IF 1.0 dB Bandwidth = 10 - 300 MHz	—	—	—	—	—	—
Conversion Loss	1800-2000MHz	dB	—	9.5	—	—
L - R Isolation	1800-2000MHz	dB	25.0	30.0	—	—
L - I Isolation	1800-2000MHz	dB	25.0	30.0	—	—
Input IP3	1800-2000MHz	dBm	30.0	35.0	—	—

Test Conditions: LO Drive = +17dBm, IF frequency = 70MHz. Mean and Sigma calculated at 900MHz & 1800MHz.

S 1584 A



M/A-COM ■ North America: Tel. (800) 366-2266, Fax (800) 618-8883 ■ Asia/Pacific: Tel.+85 2 2111 8088, Fax +85 2 2111 8087 ■ Europe: Tel. +44 (1344) 869 595, Fax+44 (1344) 300 020

**Absolute Maximum Ratings**

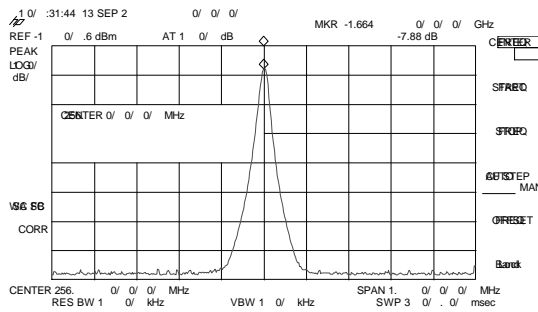
Parameter	Absolute Maximum
RF Input Power	+23dBm
LO Drive Power	+23 dBm
Operating/Storage Temperature	-40°C to +85°C

**Pin Configuration**

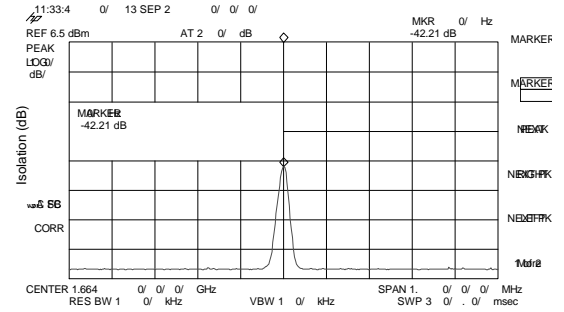
Function	Pin No.
RF	1
LO	2
IF	3
Ground	4,5,6

**Typical Performance @ +25°C**

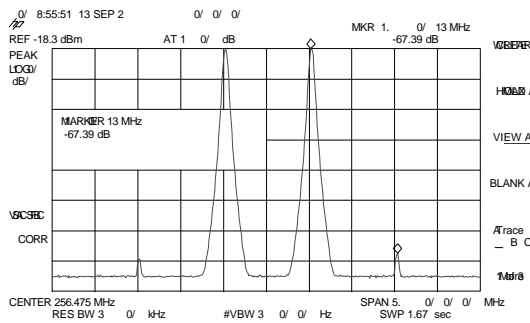
**Conversion Loss**



**L-I Isolation**



**IIP3**



**L-R Isolation**

