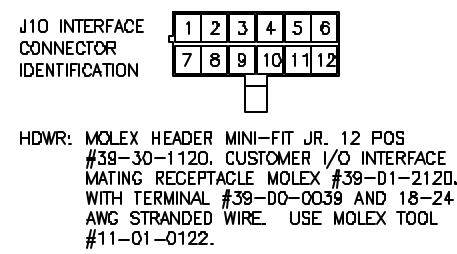


PROPRIETARY DATA:
 This document and information contained may not be reproduced, used or disclosed without prior written permission of WESTCOR a division of VICOR Corporation.

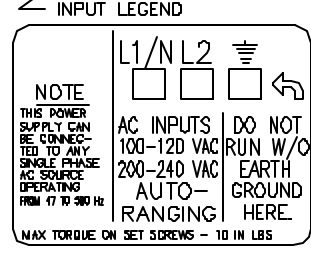
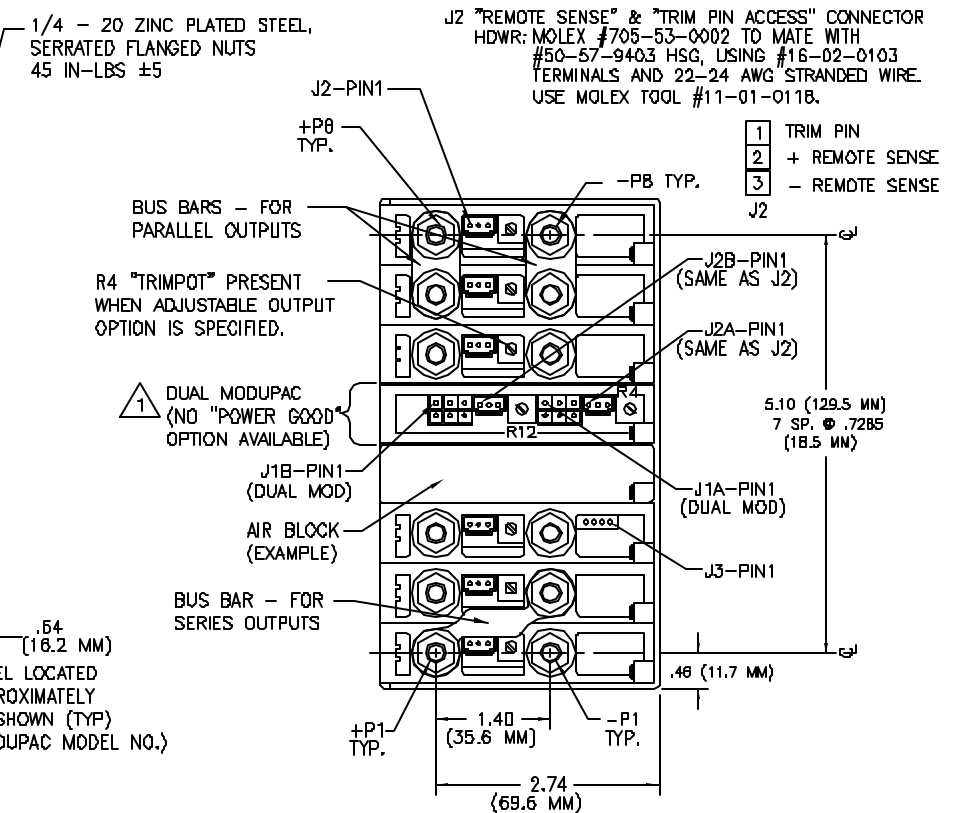
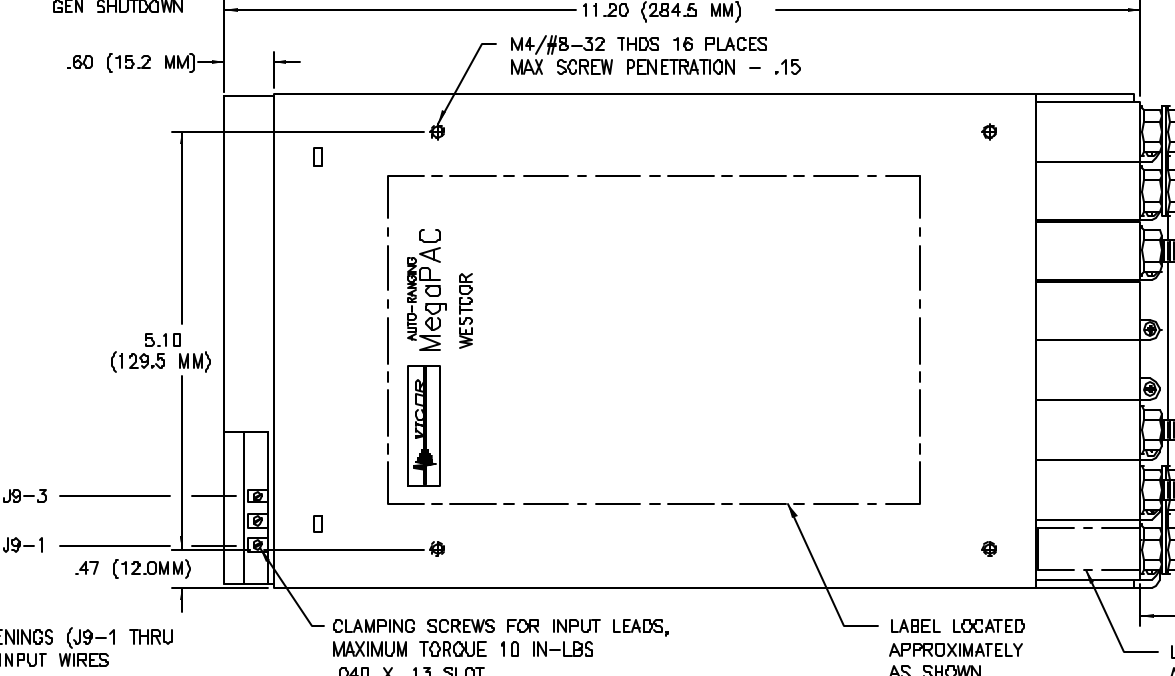
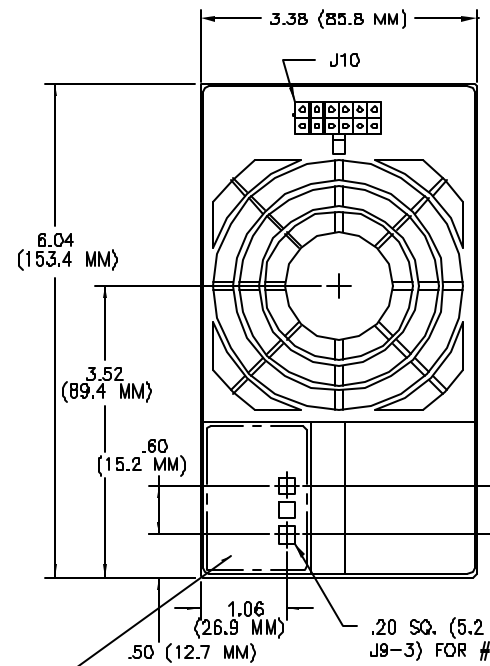
REVISIONS				
ECO	REV	DESCRIPTION	DATE	APPROVED
256	A	PRODUCTION RELEASE	1/13/94	RBD
280	B	REVISED PER ECO	3/14/94	RBD
482	B1	CHG PIN 1 LOCATION ON J3	12/21/95	RBD
---	B2	CHG: .45 (11.4MM) TO .47 (12.0MM)	30/30/99	LGK
---	B3	ADD MISSING DIMENSIONS	06/16/00	LGK
1137	C	ADD REFERENCE TO VICOR WEB PAGE	3/21/02	RME

NOTE: A DETAILED DESIGN GUIDE IS AVAILABLE @ www.vicorpower.com



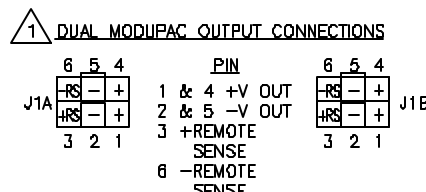
J10 INTERFACE PIN OUT

J10-1	E/D-1
J10-2	E/D-2
J10-3	E/D-3
J10-4	E/D-4
J10-5	E/D-5
J10-6	E/D-6
J10-7	E/D-7
J10-8	E/D-8
J10-9	Vcc +5V, 0.3A
J10-10	SIGNAL GROUND
J10-11	AC POWER OK
J10-12	GEN SHUTDOWN

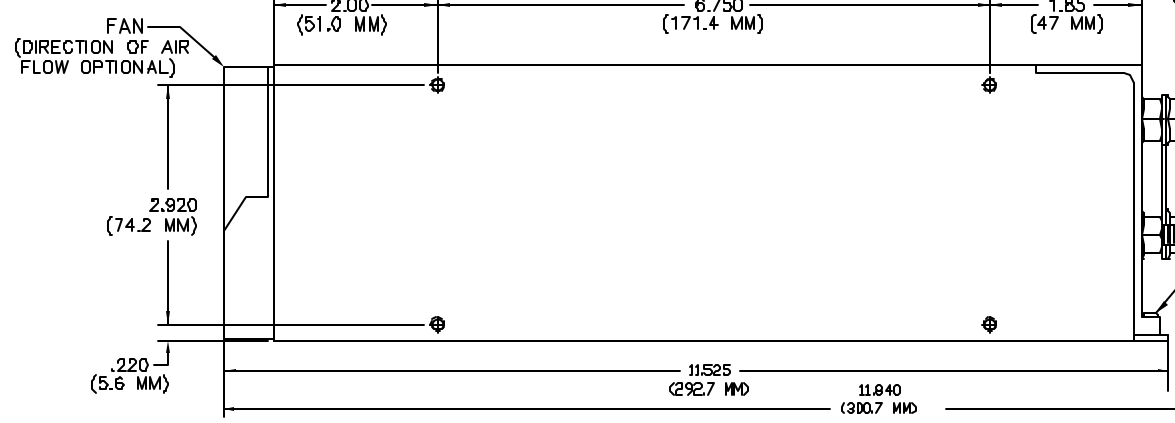


J9 INPUT CONNECTIONS
 J9-1 EARTH GROUND
 J9-2 AC HOT
 J9-3 AC NEUTRAL

NOTES: UNLESS OTHERWISE SPECIFIED



J1A & J1B REMOTE SENSE/OUTPUT CONNECTORS ARE MOLEX #39-30-1060 MINI-FIT JR. HDRS. MATING RECEPTACLE IS MOLEX #39-01-2060 HOUSING WITH #39-00-0039 TERMINALS AND 18-24 AWG STRANDED WIRE. USE MOLEX TOOL #11-01-0122.



UNLESS OTHERWISE SPECIFIED DIMENSIONS ARE IN INCHES TOLERANCES ARE:		CONTRACT NO. ---		WESTCOR a division of VICOR Corp.	
FRACTIONS	DECIMALS	ANGLES	APPROVALS		
± ---	.XX ± .02	± ---	DRAWN	LSANTOS	01/04/94
	.XXX ± .010		CHECKED	H.A.POWERS	1/13/94
MATERIAL	---		APPROVED	R.B.DRABING	1/13/94
FINISH	---		DESIGNED	---	---
---	SEE MIS				
NEXT ASSY	USED ON				
APPLICATION	DO NOT SCALE DRAWING				

SIZE	CAGE CODE	DWG NO.	REV
B	0E5V2	08-040831	C
SCALE	1/2	FILENAME: 08-040831	SHEET 1 OF 1