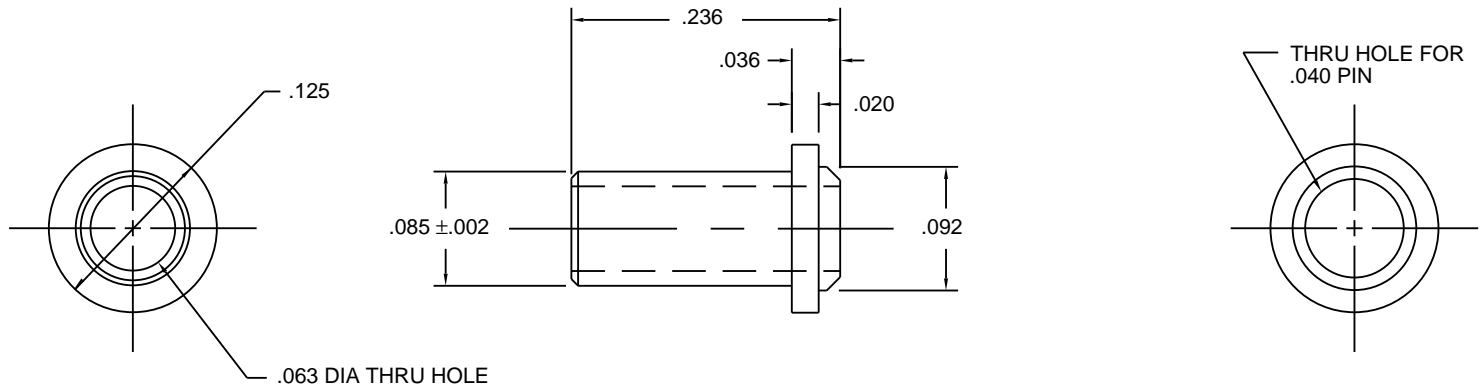


THIS DOCUMENT AND THE DATA DISCLOSED
HEREIN OR HEREWITH IS NOT TO BE REPRODUCED,
USED, OR DISCLOSED IN WHOLE OR IN PART
TO ANYONE WITHOUT PERMISSION OF VICOR CORP.



NOTES:

1. MATERIAL: BRASS QQ-B-626 ALLOY 360 1/2 HARD.
ELECTRO-TIN PER MIL-T-10727, TYPE I
WITH BERYLLIUM COPPER SPRING INSERT
CAPTIVATED.
2. CONCORD P/N 09-9002-1-04 OR APPROVED EQUIV.



DRAWN:		<p style="text-align: center;">∅.040 P.C. PIN SOCKET</p>	
CHECKED:			
APPD:			
ALL DIMENSIONS ARE IN INCHES (MILLIMETERS) DO NOT SCALE DRAWING	TOLERANCES (EXCEPT AS NOTED) .XX ± .01 .XXX ± .005 FRACT ± 1/64 ANGLES ± 1°0		DRAWING NO.
			01827
NEXT ASSY:	SCALE: 10X	SHEET	REV. 2