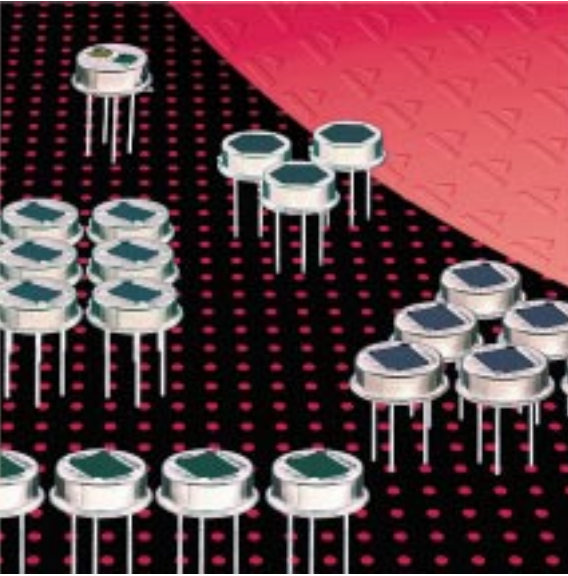


Pyroelectric Infrared Detectors

# Dual Element Detector LHi 778



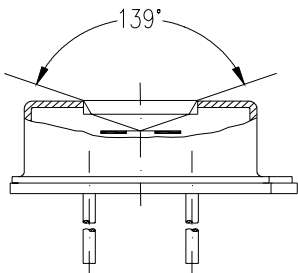
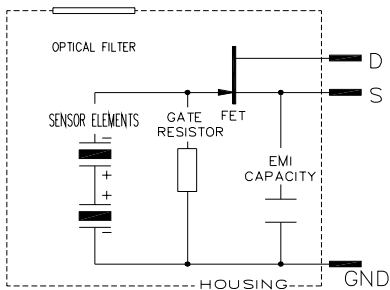
**TO-5 housing**

**Competitive cost version**

**Designed for motion control**

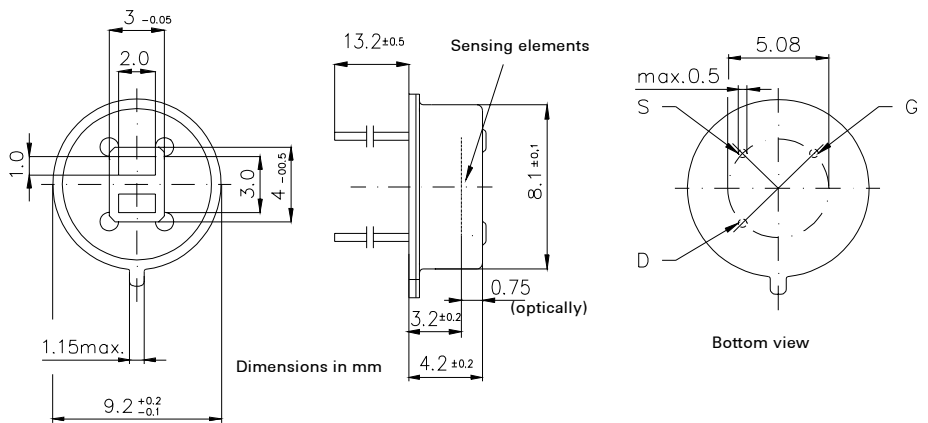
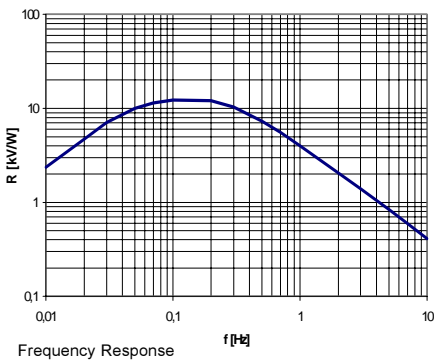
The **LHi 778** pyroelectric infrared-detector series are the standard dual element design recommended for all variants of motion control. They include a dual element pyro-electric ceramic element with Fet in source follower connection.

**LHi 778** detector is available in **TO-5** housing with standard infrared filter. It provides high responsivity with excellent common mode performance (match) and low noise at steady state and temperature changes.



Parameters		LHi 778			
	min	typical	max	units	condition
<b>Element size</b>		2x1		mm <sup>2</sup>	2 elements
<b>Responsivity</b>	3 300	4000		V/W	100°C, 1 Hz
<b>Match</b>		1	10	%	
<b>Noise</b>		20	50	µVpp	25°C, 0,3...10Hz
<b>Offset Voltage</b>	0,2		1,55	V	R <sub>s</sub> =47kΩ, 25°C
<b>NEP</b>		7,5x10 <sup>-10</sup>	28x10 <sup>-10</sup>	W √Hz	1Hz Bw, 100°C, 1 Hz
<b>D*</b>	5x10 <sup>7</sup>	19x10 <sup>7</sup>		cm √Hz/W	1Hz Bw, 100°C, 1 Hz
<b>Output Impedance</b>		5	10	kΩ	47kΩ Load Res.
<b>Operating Voltage</b>	2		15	V	R <sub>s</sub> =47kΩ, 25°C
<b>Operating Temperature</b>	-40		85	°C	non permanent
<b>Storage Temperature</b>	-40		85	°C	non permanent

Right for modification reserved / WS / 27. 4.2001



Europe:  
**PerkinElmer** Optoelectronics GmbH  
 Wenzel Jaksch Str 31  
 Wiesbaden / Germany  
 Phone +49(0)611 492 0  
 Fax +49(0)611 492 170

USA:  
**PerkinElmer** Optoelectronics  
 2175 Mission College Blvd  
 Santa Clara, CA 95054  
 Phone +408 565 0830  
 Fax +408 565 0703

Asia:  
**PerkinElmer** Optoelectronics  
 47, Ayer Rajah Crescent #06-12  
 Singapore 139947  
 Phone +65 775 2022  
 Fax +65 775 1008

