



LA5000 Series

2 to 5V 60mA

Low Saturation Voltage Regulators

Overview

The LA5002, 5003, 5004, 5005 are voltage regulators having a small input-output voltage drop (0.2V typ). They are especially suited for use in battery-powered low voltage equipment and commercial or industrial equipment having a large voltage regulation.

Features

- Small input-output voltage drop (0.2V/ $I_{OUT}=20\text{mA}$ typ).
- Minimum number of external parts required.
- Highly resistant against load short.
- Radio noise (radiation) control pin.

Specifications

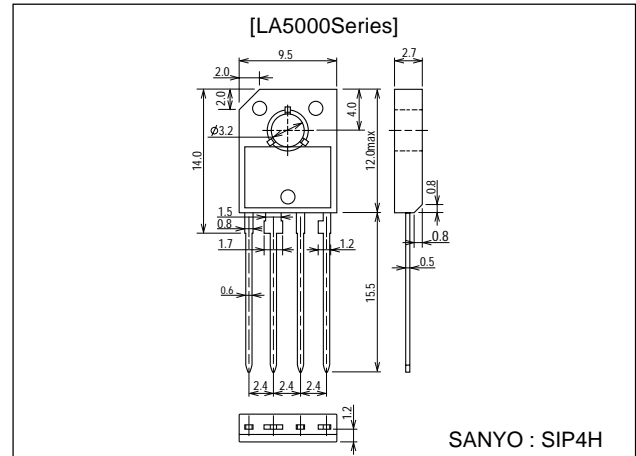
Maximum Ratings at $T_a = 25^\circ\text{C}$

Parameter	Symbol	Conditions	Ratings	Unit
Input supply voltage	V_{IN} max		12	V
Output current	I_{OUT} max		60	mA
Allowable power dissipation	P_d max	$T_a=80^\circ\text{C}$	560	mW
Operating temperature	T_{opr}		-20 to +80	$^\circ\text{C}$
Storage temperature	T_{stg}		-30 to +125	$^\circ\text{C}$

Package Dimensions

unit:mm

3027A-SIP4H



Electrical Characteristics at $T_a = 25^\circ\text{C}$, $C_{OUT}=10\mu\text{F}$, $I_{OUT}=20\text{mA}$, $V_{IN}=3\text{V}$ [LA5002], $V_{IN}=4\text{V}$ [5003], $V_{IN}=5\text{V}$ [5004], $V_{IN}=6\text{V}$ [LA5005]

Parameter	Symbol	Conditions	Ratings			Unit
			min	typ	max	
Output voltage	V_O	LA5002	1.85	2.0	2.15	V
		LA5003	2.8	3.0	3.2	V
		LA5004	3.75	4.0	4.25	V
		LA5005	4.75	5.0	5.25	V
Line regulation	V_{Oline}	LA5002 : $2.5\text{V} < V_{IN} < 8\text{V}$			50	mV
		LA5003 : $3.5\text{V} < V_{IN} < 9\text{V}$			50	mV
		LA5004 : $4.5\text{V} < V_{IN} < 10\text{V}$			50	mV
		LA5005 : $5.5\text{V} < V_{IN} < 11\text{V}$			50	mV
Load regulation	V_{Oload}	$1\text{mA} < I_{OUT} < 40\text{mA}$			20	mV
		$1\text{mA} < I_{OUT} < 50\text{mA}$			25	mV

Continued on next page.

■ Any and all SANYO products described or contained herein do not have specifications that can handle applications that require extremely high levels of reliability, such as life-support systems, aircraft's control systems, or other applications whose failure can be reasonably expected to result in serious physical and/or material damage. Consult with your SANYO representative nearest you before using any SANYO products described or contained herein in such applications.

■ SANYO assumes no responsibility for equipment failures that result from using products at values that exceed, even momentarily, rated values (such as maximum ratings, operating condition ranges, or other parameters) listed in products specifications of any and all SANYO products described or contained herein.

SANYO Electric Co., Ltd. Semiconductor Company

TOKYO OFFICE Tokyo Bldg., 1-10, 1 Chome, Ueno, Taito-ku, TOKYO, 110-8534 JAPAN

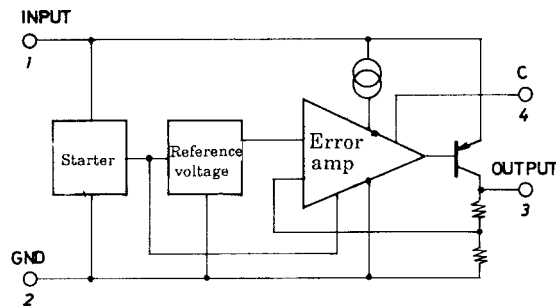
33100TN (KT)/N069YT, TS No.1187-1/5

LA5000Series

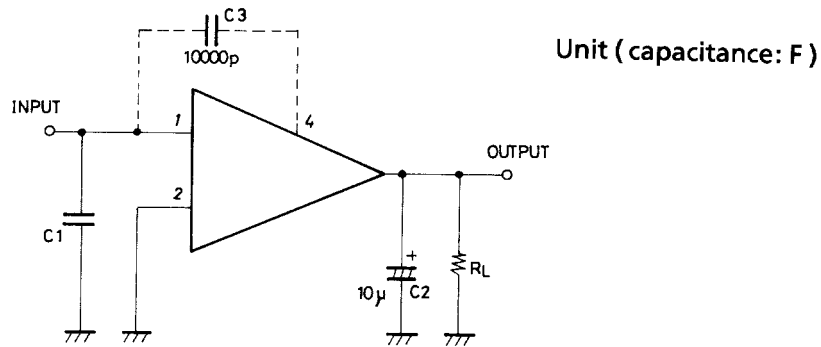
Continued from preceding page.

Parameter	Symbol	Conditions	Ratings			Unit
			min	typ	max	
Quiescent current	I_{CCO}	LA5002		1.2	2.0	mA
		LA5003		1.4	2.0	mA
		LA5004		1.5	2.3	mA
		LA5005		1.7	2.5	mA
Ripple voltage	R_r	LA5002, LA5004, LA5005 : $f=120\text{Hz}$	40			dB
		LA5003 : $f=120\text{Hz}$	43			dB
Input/output voltage drop	V_{drop}			0.2	0.3	V
Temperature coefficient of output voltage	$K\Delta V_o/\Delta T$		-1		+1	mV/°C
Output noise voltage	V_N	$10\text{Hz} < f < 100\text{kHz}$		30		μV

Equivalent Circuit Block Diagram

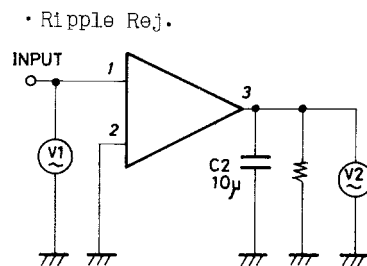
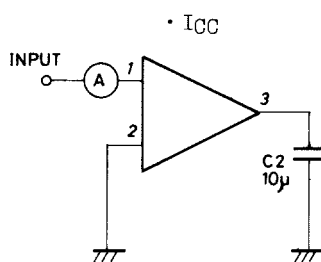
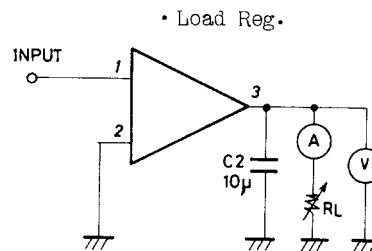
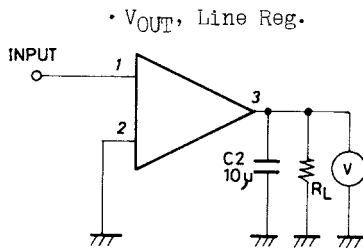


Sample Application Circuit



Note : Capacitor C3 is not required unless radio noise is a problem.

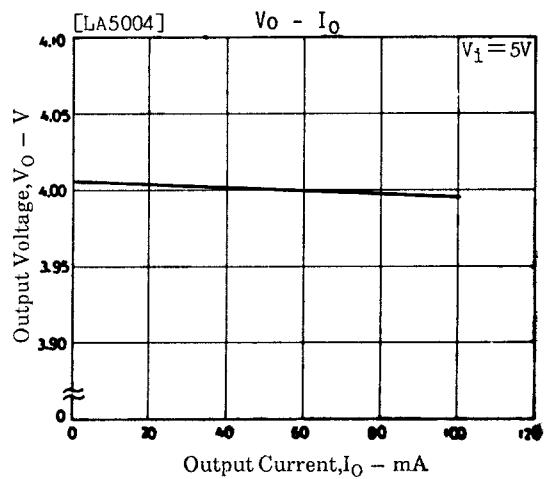
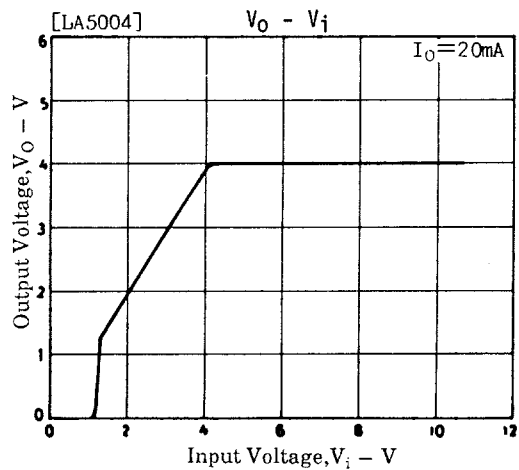
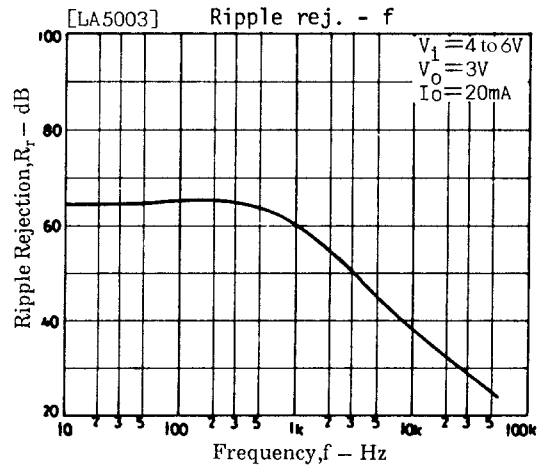
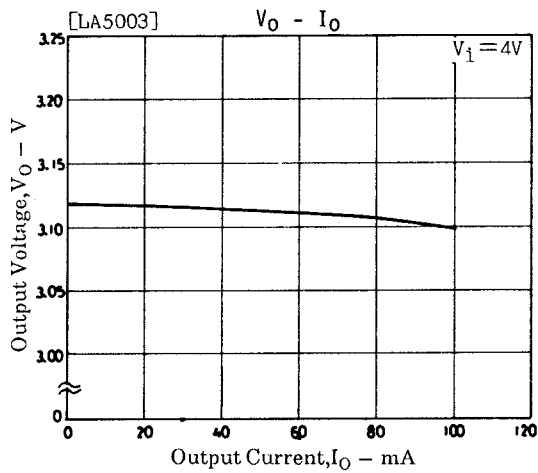
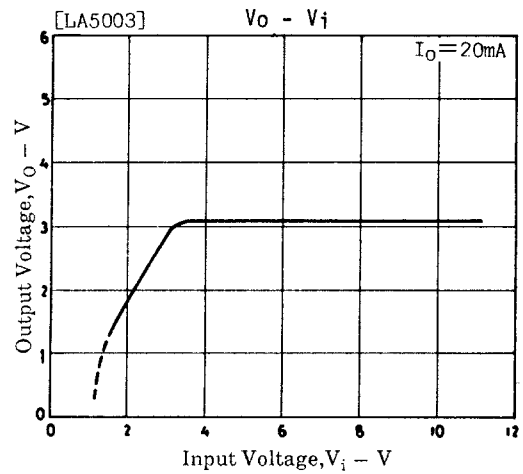
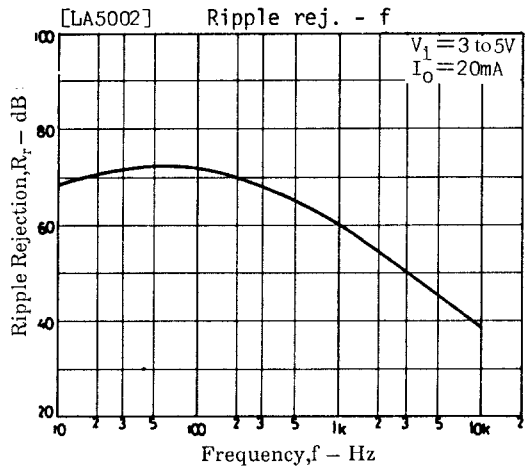
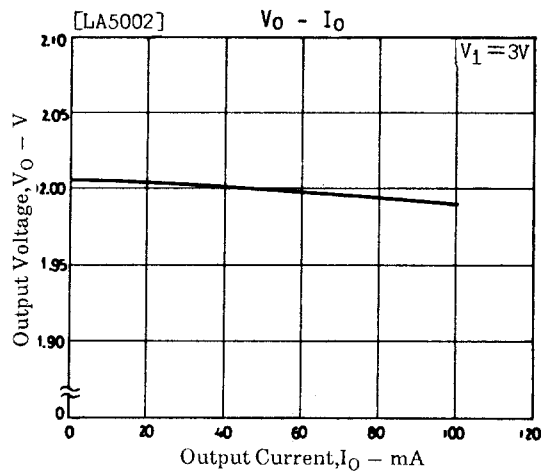
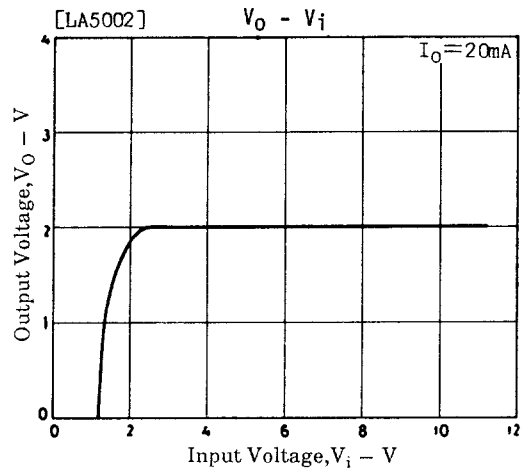
Test Circuits



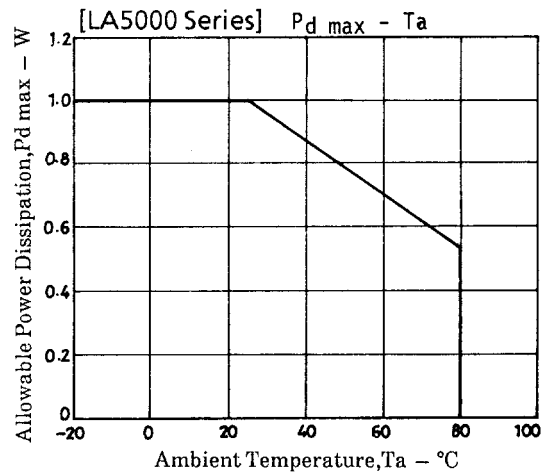
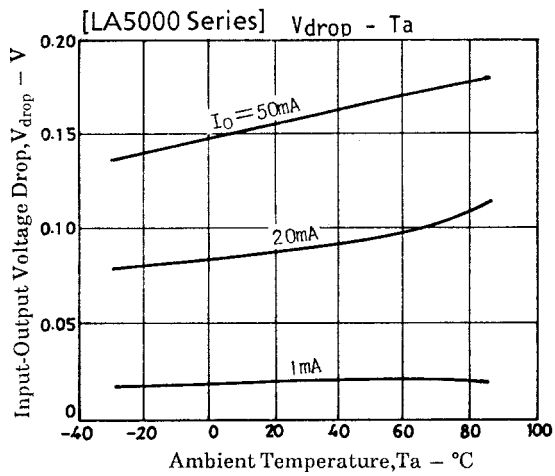
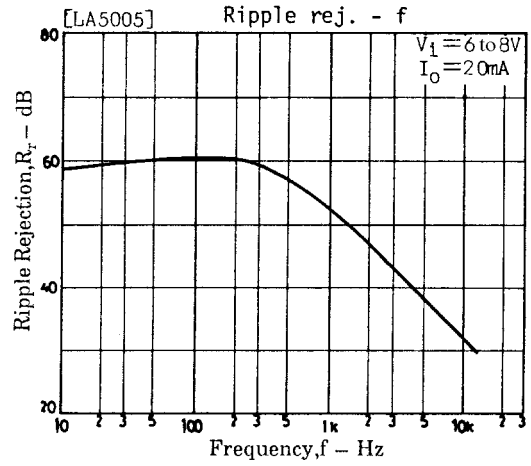
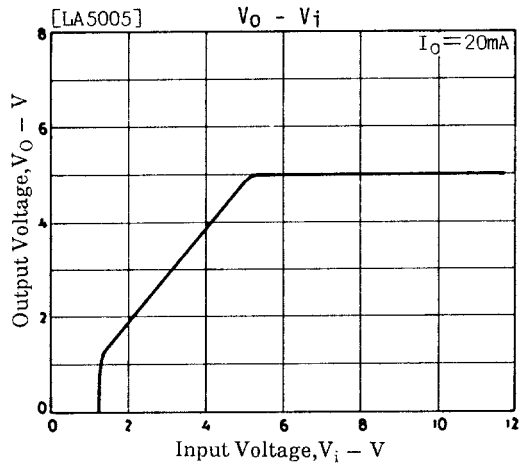
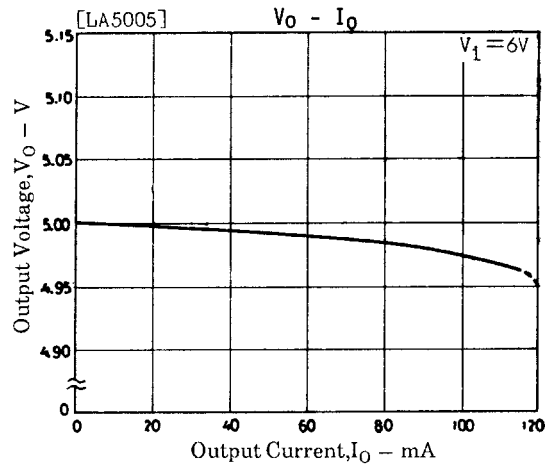
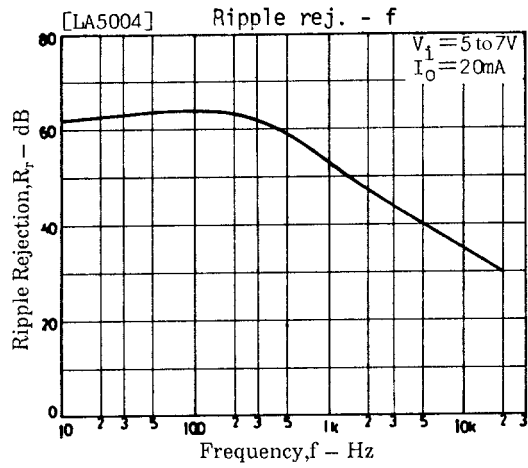
$$\text{Ripple Rej} = \frac{V_1}{V_2}$$

Unit (capacitance: F)

LA5000Series



LA5000Series



- Specifications of any and all SANYO products described or contained herein stipulate the performance, characteristics, and functions of the described products in the independent state, and are not guarantees of the performance, characteristics, and functions of the described products as mounted in the customer's products or equipment. To verify symptoms and states that cannot be evaluated in an independent device, the customer should always evaluate and test devices mounted in the customer's products or equipment.
- SANYO Electric Co., Ltd. strives to supply high-quality high-reliability products. However, any and all semiconductor products fail with some probability. It is possible that these probabilistic failures could give rise to accidents or events that could endanger human lives, that could give rise to smoke or fire, or that could cause damage to other property. When designing equipment, adopt safety measures so that these kinds of accidents or events cannot occur. Such measures include but are not limited to protective circuits and error prevention circuits for safe design, redundant design, and structural design.
- In the event that any or all SANYO products(including technical data, services) described or contained herein are controlled under any of applicable local export control laws and regulations, such products must not be exported without obtaining the export license from the authorities concerned in accordance with the above law.
- No part of this publication may be reproduced or transmitted in any form or by any means, electronic or mechanical, including photocopying and recording, or any information storage or retrieval system, or otherwise, without the prior written permission of SANYO Electric Co., Ltd.
- Any and all information described or contained herein are subject to change without notice due to product/technology improvement, etc. When designing equipment, refer to the "Delivery Specification" for the SANYO product that you intend to use.
- Information (including circuit diagrams and circuit parameters) herein is for example only ; it is not guaranteed for volume production. SANYO believes information herein is accurate and reliable, but no guarantees are made or implied regarding its use or any infringements of intellectual property rights or other rights of third parties.

This catalog provides information as of April, 2000. Specifications and information herein are subject to change without notice.