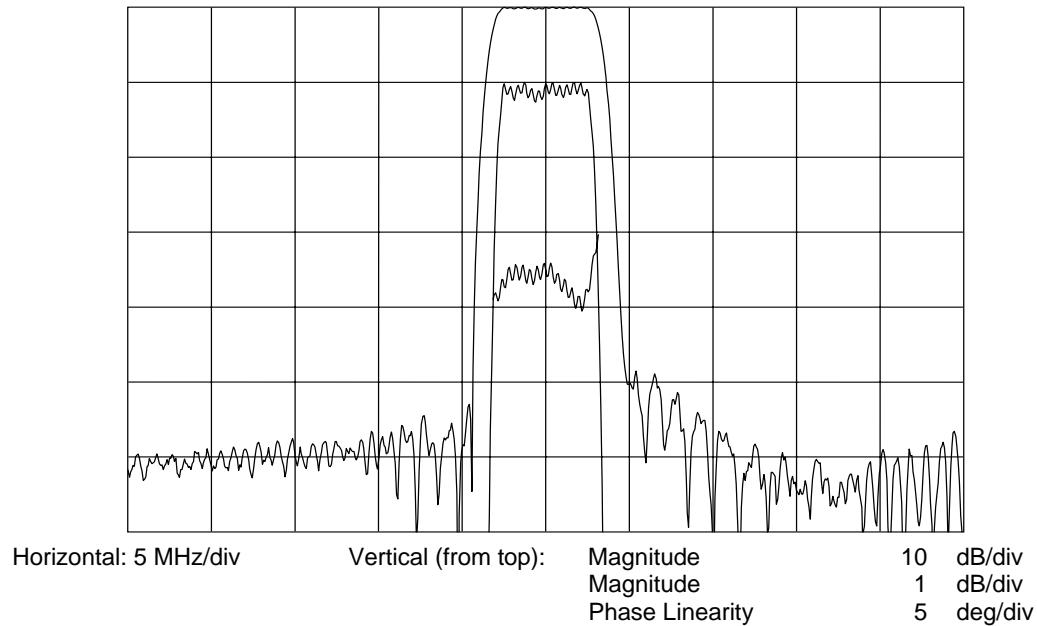




### TYPICAL PERFORMANCE



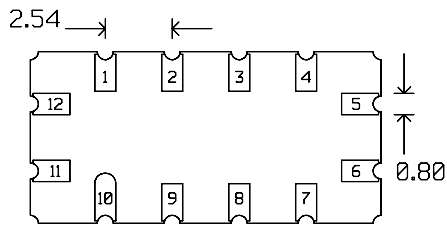
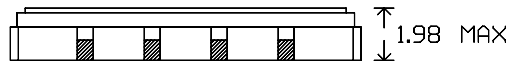
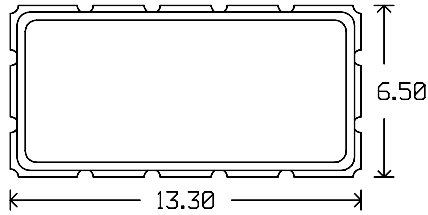
### SPECIFICATION

Parameter	Min	Typ	Max	Units
Center Frequency (Fc, 3dB points)		426.00		MHz
Average Insertion Loss (Fc +/- 2.58 MHz) <sup>2</sup>			20.5	dB
Lower 0.5 dB Band Edge			423.36	MHz
Upper 0.5 dB Band Edge	428.52			MHz
Lower 3 dB Band Edge	422.35			MHz
Upper 3 dB Band Edge			429.65	MHz
Lower 40 dB Band edge	421.31			MHz
Upper 40 dB Band Edge			430.74	MHz
Lower 45 dB Band Edge	421.20			MHz
Upper 45 dB Band Edge			430.89	MHz
Lower 50 dB Band Edge	419.50			MHz
Upper 50 dB Band Edge			433.50	MHz
Rejection (100 to 419.5 MHz)	50			dB
Rejection (433.5 to 500 MHz)	50			dB
Passband Ripple			0.7	dB
Phase Ripple (423.3 to 428.7 MHz)			10	deg p-p
Input VSWR at 426 MHz			5.0	:1
Output VSWR at 426 MHz			2.5	:1
Triple Transit Suppression		40		dB
Source and Load Impedance		50		Ω
Input Power			+10	dBm
Operating Temperature Range	0	23	70	° C

Notes: 1. Unless noted otherwise, specifications apply @ temp range in a 50 ohm system.  
 2. All dB values are referenced to the insertion loss.



**PACKAGE OUTLINE**



**Units:** mm

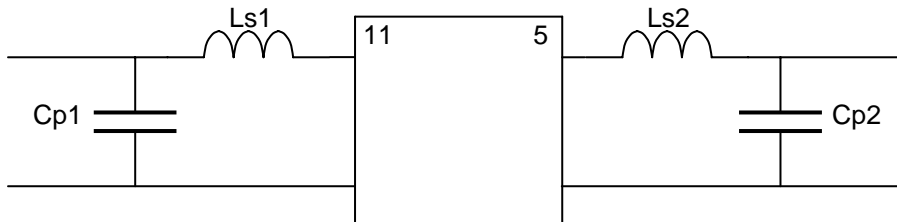
**Pad Configuration:**

Input: 11

Output: 5

Ground: 1,2,3,4,6,7,8,9,10,12

**MATCHING CIRCUIT**



Typical component values:

Ls1 = 27 nH  
Cp1 = 15 pF

Ls2 = 22 nH  
Cp2 = 12 pF

(Minimum inductor Q = 40)

**Notes**

- Maximum 2% tolerance matching components shall be used.
- Tuning values shown are for reference only. Optimum values may change depending upon board layout.

ISO 9001  
Registered