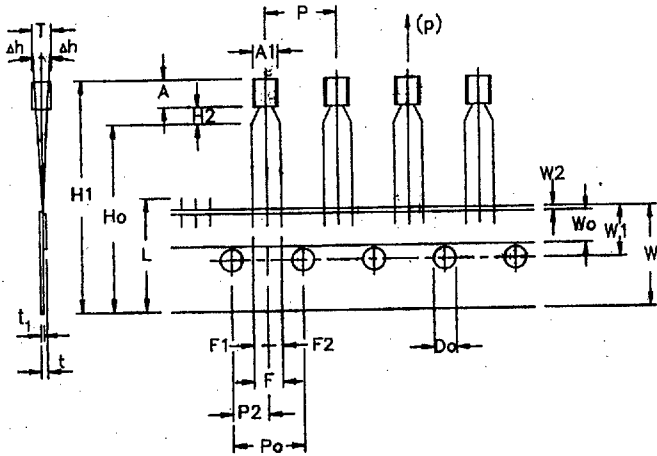


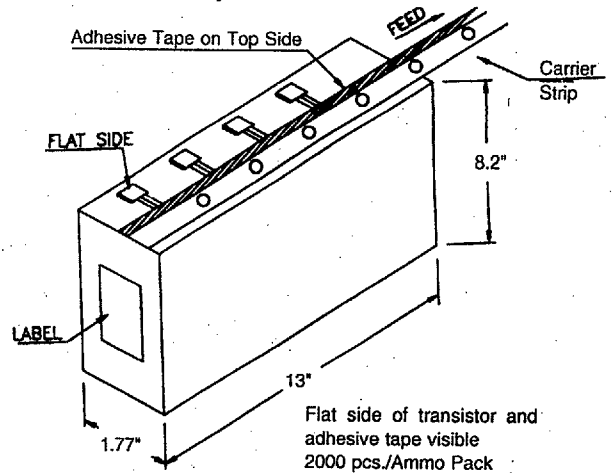
Maximum Ratings							Electrical Characteristics (Ta=25°C, Unless Otherwise Specified)															
Type No.	V _{CB0} (V)	V _{CEO} (V)	V _{EBO} (V)	P _D (W)	I _C (A)	I _{CB0} (μA)	V _{CB} (V)	I _{CES} (μA)	V _{CE} (V)	h _{FE}	I _C & I _{CE} (mA)	V _{CE(SAT)} (V)	V _{BE(SAT)} (V)	I _C (mA)	C _{ob} (pF)	f _i (MHz)	t _{off} (ns)	N _F (dB)	C _{rs} (pF)	CDIL Case Style		
	Min	Min	Min	@Tc=25°C		Max	@ (V)	Max	@ (V)	Min Max	Min Max	Max Min	Max	Max	Typ Max	Min Typ Max	Max	Max	Max	Max		
MPS3904	60	40	6	0.625	0.2			*0.05	30	40 70 100	0.1 1 10	0.2 0.3	65	0.85 1 50	4	200					TO-92	
MPS4123	40	30	5	0.625	0.2	0.05	20			50 25	150 50	2 1	1	0.3 0.95	50	4	100			6	TO-92	
MPS4124	30	25	5	0.625	0.2	0.05	20			120 60	360 50	2 1	1	0.3 0.95	50	4	170				TO-92	
MPS5172	25	25	5	0.625	0.1	0.1	25			100	500	10	10	0.25		10					TO-92	
MPS6507	\$30	20	3	0.625	0.05	0.05	15			25		2	10			2.5	700			10	TO-92	
MPS6511	\$30	20		0.625	0.05	0.05	15			25		10	10			2.5					TO-92	
MPS6512	40	30	4	0.625	0.1	0.05	30			50 30	100 100	2 10	10	0.5		50	3.5				TO-92	
MPS6521	40	25	4	0.625	0.1	0.05	30			300 150	600 0.1	2 10	10	0.5		50	3.5			3 0.01	TO-92	
MPS6530	60	40	5	0.625	0.8	0.05	40			25 40 30	500 120 10	10 1 1		0.5		1 100	5				TO-92	
MPS6531	60	40	5	0.625	0.8	0.05	40			50 90 60	500 270 10	10 1 1		0.3		1 100	7				TO-92	
MPS6532	50	30	5	0.625	0.6	0.1	30			30		100	1	0.5		1.2 100	5				TO-92	
MPS6539	20	20		0.35		0.05	15			20		4	10			0.7 500				4 4.5 100	TO-92-3	
MPS6540	30	30	4	0.35	0.1	0.1	25			25		2	10	0.5		10	0.7	350		2	TO-92-3	
MPS6541		20	4	0.625	0.05	0.05	15			25		4	10			1.7 600			1500	4	TO-92	
MPS6542	\$30	20		0.35	0.1	0.05	15			25		2	10			1.5 700				10	TO-92-3	
MPS6543	35	20	3	0.35	0.1	0.1	25			25		4	10	0.35		0.95 10	1	750		4	TO-92-3	
MPS6546	35	25	3	0.35	0.1	0.1	25			20		2	10	0.35		10	0.5	600		2	TO-92-3	
MPS6547	35	25	3	0.35	0.1	0.1	25			20		2	5	0.35		10	0.4	600		2	TO-92-3	
MPS6548	30	25	3	0.35		0.1	25			25		4	10	0.5		0.95 4	0.7	650		4	TO-92-3	
MPS6560	25	25	4	0.625	0.5	0.1	20			35 50 50	10 100 200	1 1 500		0.5		1.2 500	30	60		10	TO-92	
MPS6561	20	20	4	0.625	0.5	0.1	20			35 50 50	10 100 200	1 1 350		0.5		1.2 350	30	60		10	TO-92	
MPS6564		45	5	0.625	0.1	0.5	40			25		10	5	0.5		10	4				TO-92	
MPS6565	60	45	4	0.625	0.1	0.1	30			40	160	10	10	0.4		10	3.5				TO-92	
MPS6566	60	45	4	0.625		0.1	30			100	400	10	10	0.4		10	3.5	200		10	TO-92	
MPS6567		40	5	0.35		0.5	35			25		10	5	0.5		10	0.7				TO-92-3	
MPS6568A	20	20	3	0.625	0.05	0.05	10			20	200	4	5	0.3		0.96 10	0.7	375		800 4	3.3 200	TO-92-3
MPS6569	20	20	3	0.625	0.05	0.05	10			20	200	4	5	3		0.96 10	0.5	300		800 4	6 45	TO-92-3

\$ NOTE: V_{CEs}

MECHANICAL DATA



Ammo Pack Style



Item	Symbol	Specification				Remarks
		Min.	Nom.	Max.	Tol.	
Body Width	A1	4.0		4.8		
Body Height	A	4.8		5.2		
Body Thickness	T	3.9		4.2		
Pitch of Component	P		12.7		±1	
Feed Hole Pitch	Po		12.7		±0.3	Cumulative Pitch Error 1.0 mm/20 Pitch
Feed Hole Centre to Component Centre	P2		6.35		±0.4	To be measured at bottom of Clinch
Distance between Outer Leads	F		5.08		±0.6	
Component Alignment	Δh		0	1	-0.2	At Top of Body
Tape Width	W		18		±0.5	
Hold-Down Tape Width	Wo		6		±0.2	
Hole Position	W1		9		±0.7	
Hold-Down Tape Position	W2		0.5		±0.2	
Lead Wire Clinch Height	Ho		16		±0.5	
Component Height	H1			32.25		
Length of Snipped leads	L			11.0		
Feed Hole Diameter	Do		4		±0.2	
Total Tape Thickness	t			1.2		t ₁ 0.3-0.6
Lead-to-Lead Distance	F1,F2		2.54		+0.4 -0.1	
Clinch Height	H2			3		
Pull-out Force	(p)	6N				

Dimensions in m.m.

- Notes:**
1. Maximum alignment deviation between leads not to be greater than 0.2 mm.
 2. Maximum non-cumulative variation between tape feed holes shall not exceed 1 mm in 20 pitches
 3. Hold-down tape not to exceed beyond the edge(s) of carrier tape and there shall be no exposure of adhesive.
 4. No more than 3 consecutive missing components permitted.
 5. A tape trailer, having at least three feed holes is required after the last component.
 6. Splices shall not interfere with the sprocket feed holes.