

TOSHIBA TRANSISTOR SILICON PNP EPITAXIAL TYPE (PCT PROCESS)

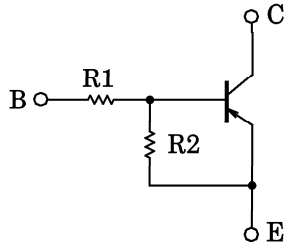
RN2907, RN2908, RN2909

SWITCHING, INVERTER CIRCUIT, INTERFACE CIRCUIT
AND DRIVER CIRCUIT APPLICATIONS.

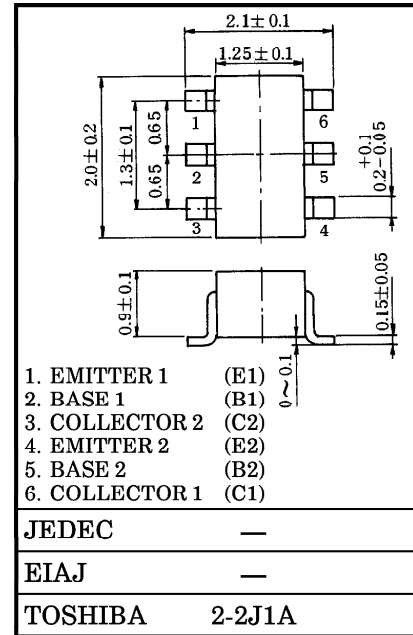
Unit in mm

- Including Two Devices in US6 (Ultra Super Mini Type with 6 leads)
- With Built-in Bias Resistors
- Simplify Circuit Design
- Reduce a Quantity of Parts and Manufacturing Process
- Complementary to RN1907~1909

EQUIVALENT CIRCUIT AND BIAS RESISTOR VALUES

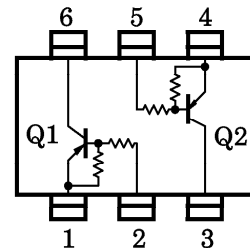


TYPE No.	R1 (kΩ)	R2 (kΩ)
RN2907	10	47
RN2908	22	47
RN2909	47	22



Weight : 6.8mg

EQUIVALENT CIRCUIT (TOP VIEW)



MAXIMUM RATINGS (Ta = 25°C) (Q1, Q2 COMMON)

CHARACTERISTIC		SYMBOL	RATING	UNIT
Collector-Base Voltage	RN2907~2909	V _{CB0}	-50	V
Collector-Emitter Voltage	RN2907~2909	V _{CE0}	-50	V
Emitter-Base Voltage	RN2907	V _{EB0}	-6	V
	RN2908		-7	
	RN2909		-15	
Collector Current	RN2907~2909	I _C	-100	mA
Collector Power Dissipation	RN2907~2909	P _C *	200	mW
Junction Temperature	RN2907~2909	T _j	150	°C
Storage Temperature Range	RN2907~2909	T _{stg}	-55~150	°C

* : Total Rating

961001EAA2

● TOSHIBA is continually working to improve the quality and the reliability of its products. Nevertheless, semiconductor devices in general can malfunction or fail due to their inherent electrical sensitivity and vulnerability to physical stress. It is the responsibility of the buyer, when utilizing TOSHIBA products, to observe standards of safety, and to avoid situations in which a malfunction or failure of a TOSHIBA product could cause loss of human life, bodily injury or damage to property. In developing your designs, please ensure that TOSHIBA products are used within specified operating ranges as set forth in the most recent products specifications. Also, please keep in mind the precautions and conditions set forth in the TOSHIBA Semiconductor Reliability Handbook.

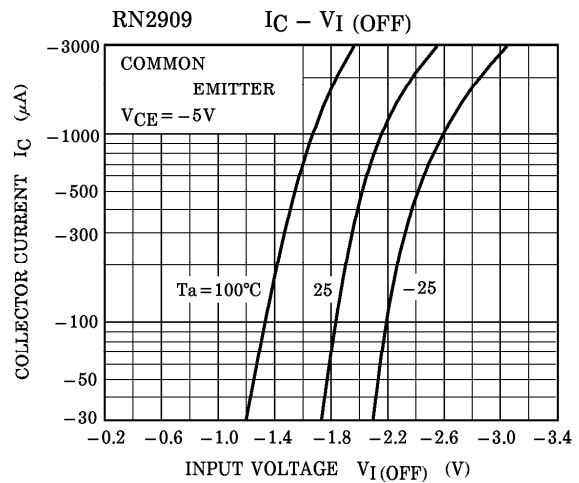
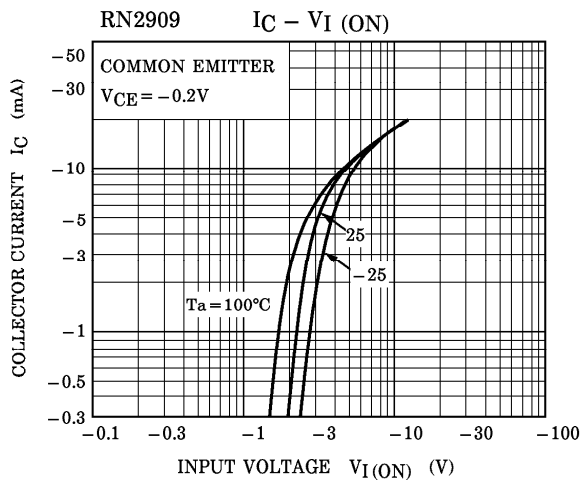
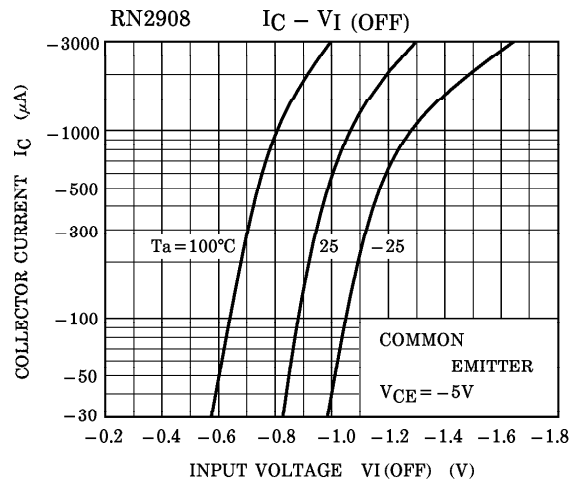
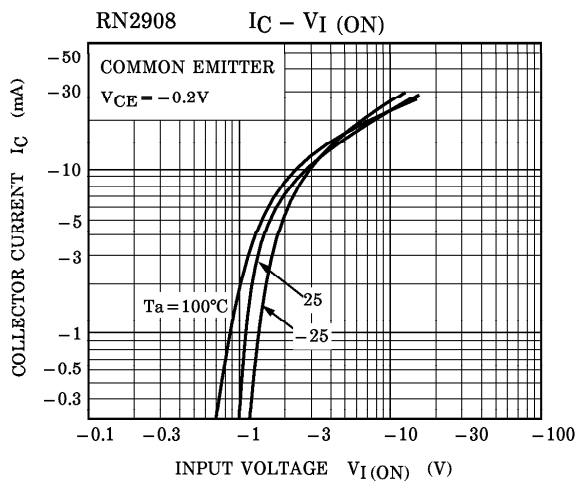
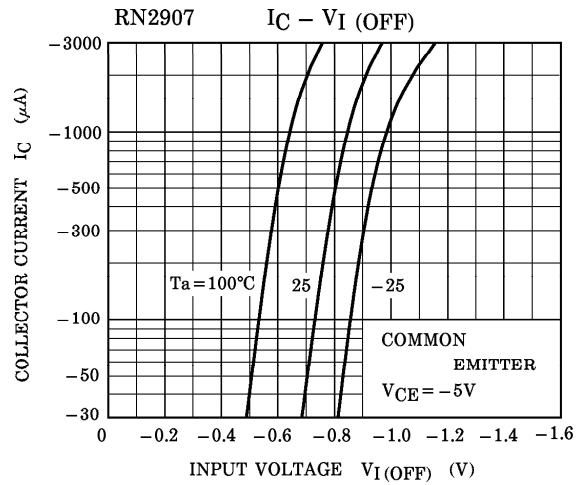
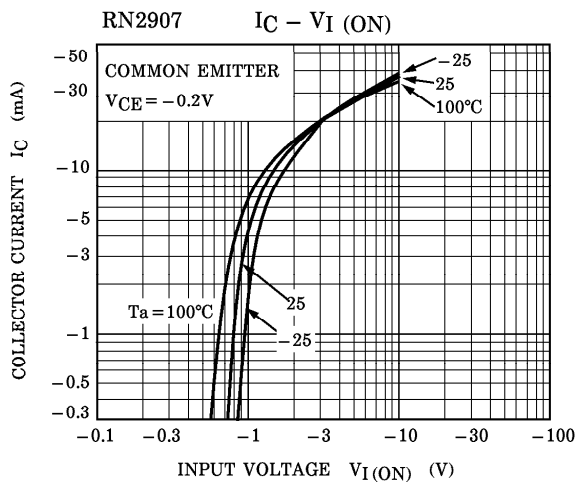
● The information contained herein is presented only as a guide for the applications of our products. No responsibility is assumed by TOSHIBA CORPORATION for any infringements of intellectual property or other rights of the third parties which may result from its use. No license is granted by implication or otherwise under any intellectual property or other rights of TOSHIBA CORPORATION or others.

● The information contained herein is subject to change without notice.

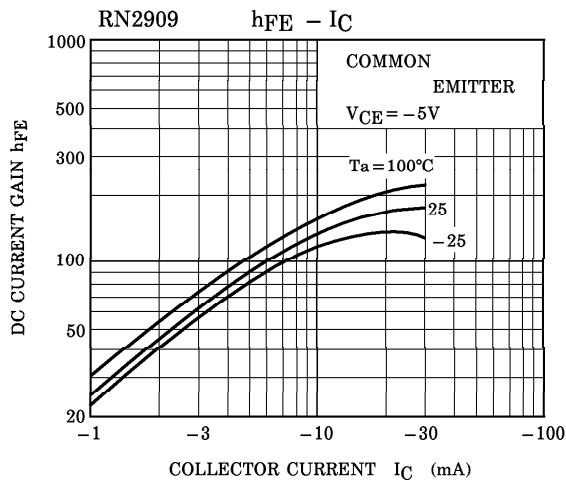
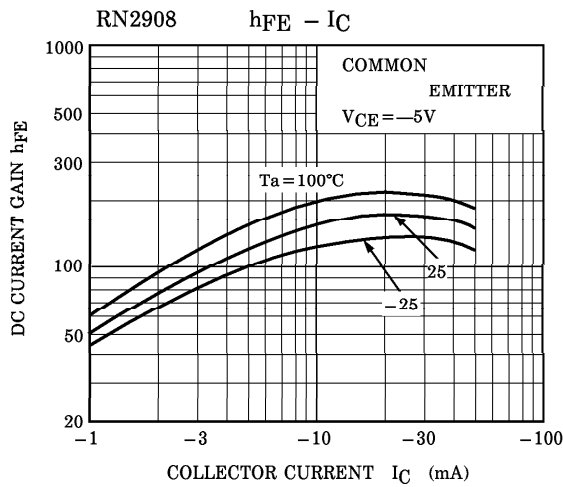
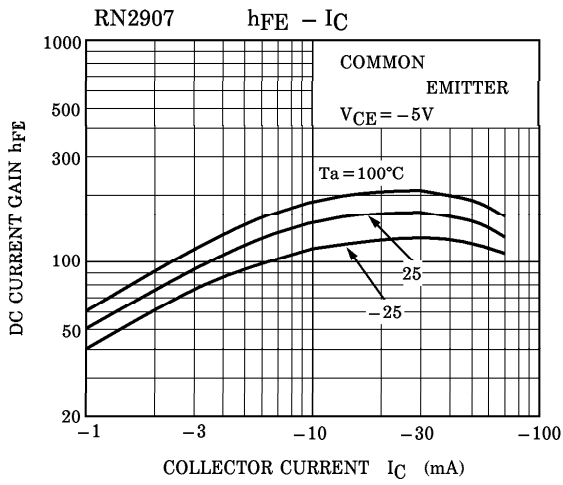
ELECTRICAL CHARACTERISTICS (Ta = 25°C) (Q1, Q2 COMMON)

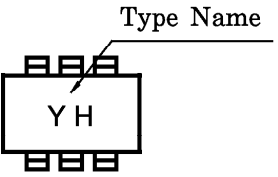
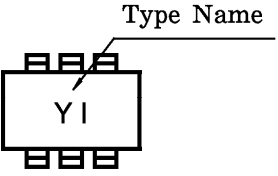
CHARACTERISTIC		SYMBOL	TEST CONDITION	MIN.	TYP.	MAX.	UNIT	
Collector Cut-off Current	RN2907~2909	ICBO	V _{CB} = -50V, I _E = 0	—	—	-100	nA	
		ICEO	V _{CE} = -50V, I _B = 0	—	—	-500	nA	
Emitter Cut-off Current	RN2907	IEBO	V _{EB} = -6V, I _C = 0	-0.081	—	-0.15	mA	
	RN2908			V _{EB} = -7V, I _C = 0	-0.078	—		-0.145
	RN2909			V _{EB} = -15V, I _C = 0	-0.167	—		-0.311
DC Current Gain	RN2907	h _{FE}	V _{CE} = -5V, I _C = -1mA	80	—	—		
	RN2908			80	—	—		
	RN2909			70	—	—		
Collector-Emitter Saturation Voltage	RN2907~2909	V _{CE(sat)}	I _C = -5mA, I _B = -0.25mA	—	-0.1	-0.3	V	
Input Voltage (ON)	RN2907	V _{I(ON)}	V _{CE} = -0.2V, I _C = -5mA	-0.7	—	-1.8	V	
	RN2908			-1.0	—	-2.6		
	RN2909			-2.2	—	-5.8		
Input Voltage (OFF)	RN2907	V _{I(OFF)}	V _{CE} = -5V, I _C = -0.1mA	-0.5	—	-1.0	V	
	RN2908			-0.6	—	-1.16		
	RN2909			-1.5	—	-2.6		
Transition Frequency	RN2907~2909	f _T	V _{CE} = -10V, I _C = -5mA	—	200	—	MHz	
Collector Output Capacitance	RN2907~2909	C _{ob}	V _{CB} = -10V, I _E = 0, f = 1MHz	—	3	6	pF	
Input Resistor	RN2907	R1		7	10	13	kΩ	
	RN2908			15.4	22	28.6		
	RN2909			32.9	47	61.1		
Resistor Ratio	RN2907	R1 / R2		0.191	0.213	0.232		
	RN2908			0.421	0.468	0.515		
	RN2909			1.92	2.14	2.35		

(Q1, Q2 COMMON)



(Q1, Q2 COMMON)



TYPE NAME	MARKING
RN2907	
RN2908	
RN2909	