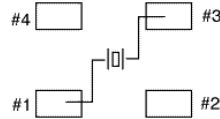
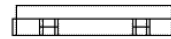
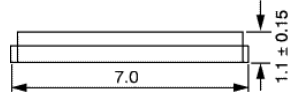


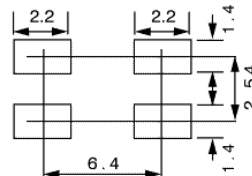
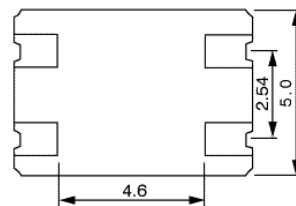
CONNECTIONS



PIN CONNECTIONS
#1, #3 : X'tal, #2, #4 : NC



LAND PATTERN (EXAMPLE)



VXC4-1034R-25M000

| | |
|-----------------------------------|--------------------------------|
| Package: | 7 x 5 x 1.1 mm 4 pads |
| Frequency: | 25.000 MHz |
| Mode: | Fundamental |
| Stability: | ± 50 PPM at -20C to +70C |
| Load Capacitance CL: | 20 pF |
| STD Calibration Tolerance: | ± 30 PPM at +25C |
| ESR: | 30 Ohms Maximum at 100 uW |
| Shunt Capacitance C0: | 7 pF Maximum |
| Absolute Drive Level: | 300 uW, 100 uW Correlation |
| Crystal Aging: | < 5 PPM/1st year |
| Standard Packaging: | Tape & Reel (1,000 pc minimum) |