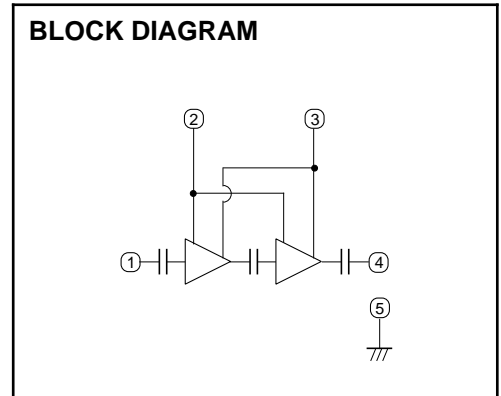
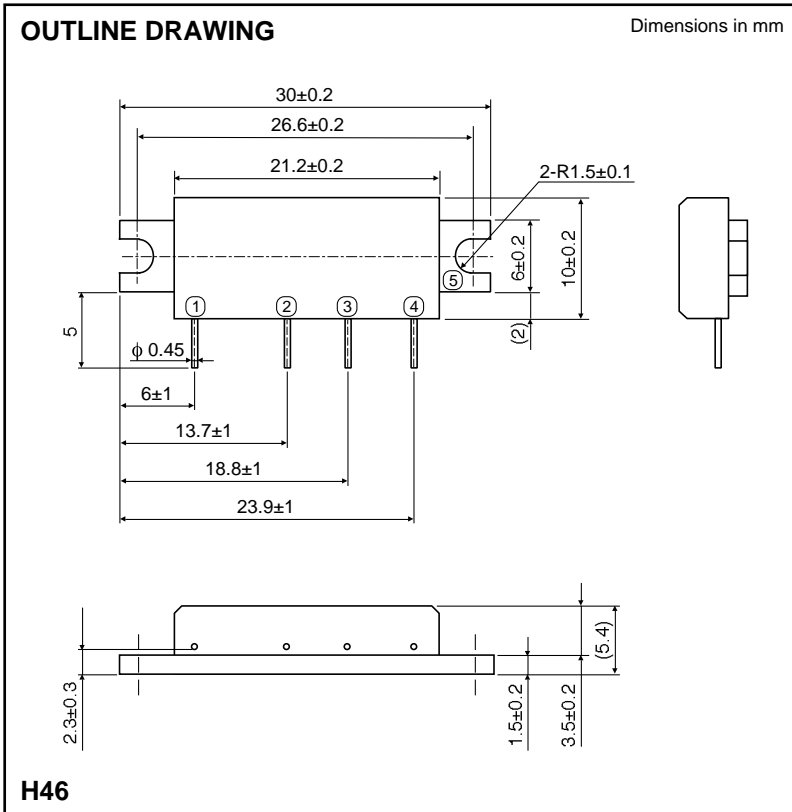


MITSUBISHI RF POWER MODULE  
**M68732EH**

**SILICON MOS FET POWER AMPLIFIER, 520-530MHz, 6.5W, FM PORTABLE RADIO**



- PIN:  
 ① Pin : RF INPUT  
 ② V<sub>GG</sub> : GATE BIAS SUPPLY  
 ③ V<sub>DD</sub> : DRAIN BIAS SUPPLY  
 ④ P<sub>O</sub> : RF OUTPUT  
 ⑤ GND: FIN

**ABSOLUTE MAXIMUM RATINGS** (T<sub>c</sub>=25°C unless otherwise noted)

Symbol	Parameter	Conditions	Ratings	Unit
V <sub>DD</sub>	Supply voltage	V <sub>GG</sub> 3.5V, Z <sub>G</sub> =Z <sub>L</sub> =50	9.2	V
V <sub>GG</sub>	Gate bias voltage		4	V
P <sub>in</sub>	Input power	f=520-530MHz, Z <sub>G</sub> =Z <sub>L</sub> =50	70	mW
P <sub>o</sub>	Output power	f=520-530MHz, Z <sub>G</sub> =Z <sub>L</sub> =50	10	W
T <sub>C (OP)</sub>	Operation case temperature	f=520-530MHz, Z <sub>G</sub> =Z <sub>L</sub> =50	-30 to +100	°C
T <sub>stg</sub>	Storage temperature		-40 to +110	°C

Note. Above parameters are guaranteed independently.

**ELECTRICAL CHARACTERISTICS** (T<sub>c</sub>=25°C, Z<sub>G</sub>=Z<sub>L</sub>=50 unless otherwise noted)

Symbol	Parameter	Test conditions	Limits		Unit
			Min	Max	
f	Frequency range		520	530	MHz
P <sub>o</sub>	Output power		6.5		W
η	Total efficiency	V <sub>DD</sub> =7.2V, V <sub>GG</sub> =3.5V, P <sub>in</sub> =50mW	35		%
2f <sub>o</sub>	2nd. harmonic			-25	dBc
in	Input VSWR			4	-
-	Stability	Z <sub>G</sub> =50, V <sub>DD</sub> =4-9.2V, Load VSWR<4:1	No parasitic oscillation		-
-	Load VSWR tolerance	V <sub>DD</sub> =9.2V, P <sub>in</sub> =50mW, P <sub>o</sub> =6.5W (V <sub>GG</sub> adjust), Z <sub>L</sub> =20:1	No degradation or destroy		-

Note. Above parameters, ratings, limits and test conditions are subject to change.

**SILICON MOS FET POWER AMPLIFIER, 520-530MHz, 6.5W, FM PORTABLE RADIO**

**TYPICAL PERFORMANCE DATA**

