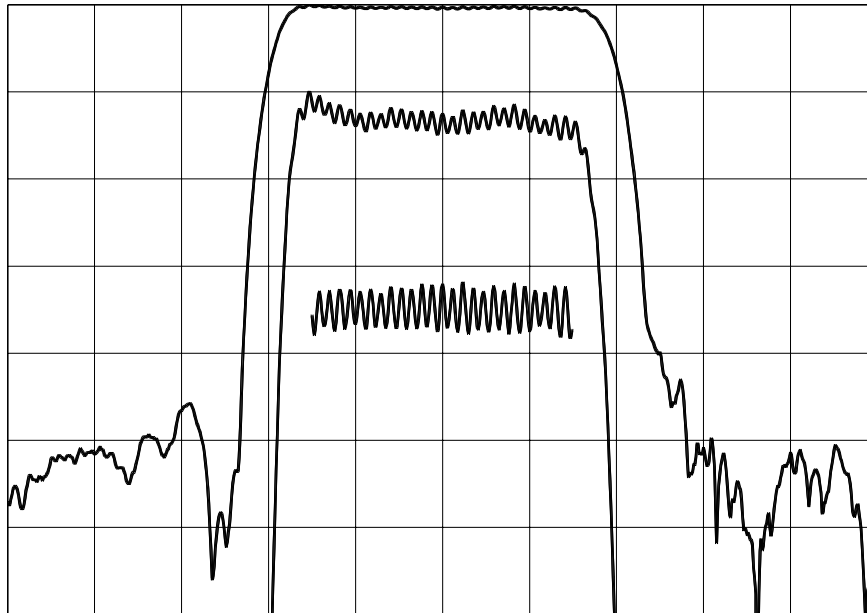


TYPICAL PERFORMANCE



Horizontal: 4.0 MHz/div Vertical (from top): Magnitude 10 dB/div
 Magnitude 1 dB/div
 Group Delay 100 ns/div

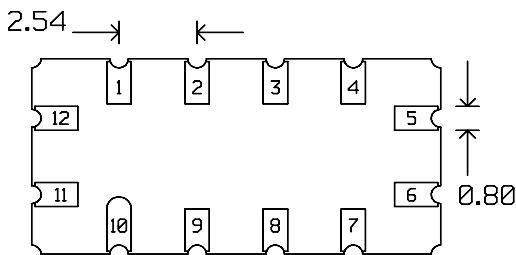
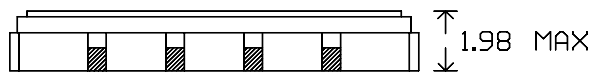
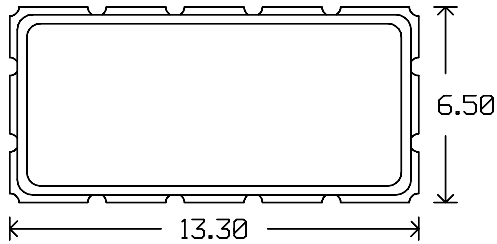
SPECIFICATION

Parameter	Min.	Typ.	Max.	Units.
Center Frequency (Fc) ¹	69.8	70.0	70.2	MHz
Insertion Loss		13.0	13.5	dB
1 dB Bandwidth ²	13.4	13.9		MHz
3 dB Bandwidth ²	14.0	15.0		MHz
40 dB Bandwidth ²		18.8	20.25	MHz
Passband Amplitude Ripple ³		0.6	1.0	dB p-p
Passband Phase Ripple ³		5.0	11.5	deg p-p
Group Delay Ripple ³		70	90	ns p-p
Absolute Delay		1.05		us
Ultimate Rejection	40	45		dB
Substrate Material	YZ Lithium Niobate			
Temperature Coefficient		-90		ppm/° C
Ambient Temperature		25		° C

Notes:

- 1: Mean Value of 3 dB points.
- 2: Relative to Insertion Loss
3. Measured over 80% of min. 3 dB Bandwidth

PACKAGE OUTLINE

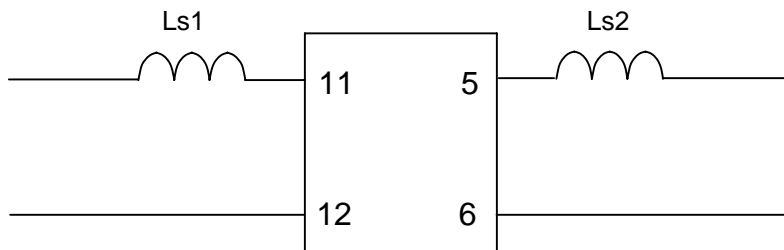


Units: mm

Pin Configuration:

Input:	11
Input Return:	12
Output:	5
Output Return:	6
Ground:	All other pins

MATCHING CIRCUIT



Component values:

$Ls1 = 120 \text{ nH}$ $Ls2 = 100 \text{ nH}$ (Minimum Q = 45)

Notes

1. Recommend use of 5% tolerance components.
2. Optimum values depend on board layout. Values intended as guide only.

ISO 9001
Registered