



Micro Commercial Components
 21201 Itasca Street Chatsworth
 CA 91311
 Phone: (818) 701-4933
 Fax: (818) 701-4939

MBR30020CT THRU MBR300100CT

Features

- Metal of siliconrectifier, majonty carrier conducton
- Guard ring for transient protection
- Low power loss high efficiency
- High surge capacity, High current capability

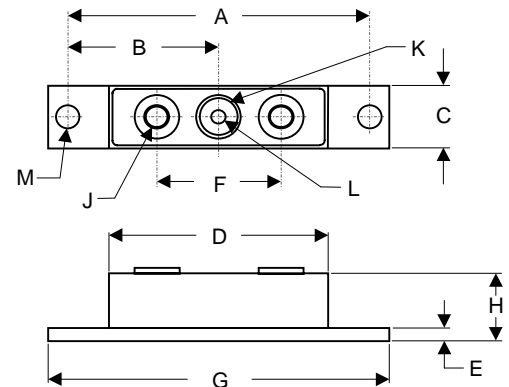
300 Amp Schottky Barrier Rectifier 20 to 100 Volts

Maximum Ratings

- Operating Temperature: -65°C to +150°C
- Storage Temperature: -65°C to +150°C

MCC Part Number	Maximum Recurrent Peak Reverse Voltage	Maximum RMS Voltage	Maximum DC Blocking Voltage
MBR30020CT	20V	14V	20V
MBR30030CT	30V	21V	30V
MBR30035CT	35V	24.5V	35V
MBR30040CT	40V	28V	40V
MBR30045CT	45V	31.5V	45V
MBR30060CT	60V	42V	60V
MBR30080CT	80V	56V	80V
MBR300100CT	100V	70V	100V

FULL PACK



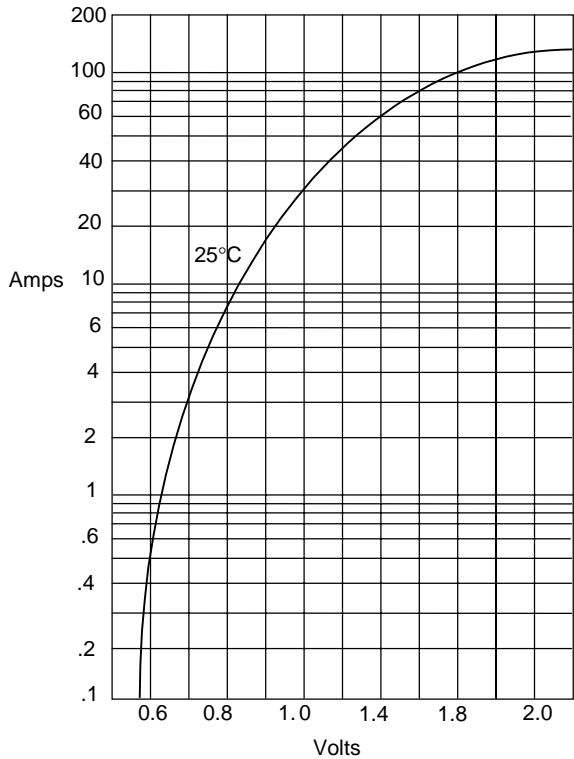
Electrical Characteristics @ 25°C Unless Otherwise Specified

Average Forward Current	$I_{F(AV)}$	300 A	$T_L = 140^\circ\text{C}$
Peak Forward Surge Current	I_{FSM}	2500A	8.3ms, half sine
Maximum Instantaneous Forward Voltage	V_F		$I_{FM} = 150 \text{ A};$ $T_A = 25^\circ\text{C}$
30020-30045CT		.63 V	
30060CT		.75 V	
30080-300100CT		.84 V	
Maximum DC Reverse Current At Rated DC Blocking Voltage	I_R	8mA	$T_A = 25^\circ\text{C}$
Typical Junction Capacitance	C_J	300pF	Measured at 1.0MHz, $V_R=4.0\text{V}$

DIM	DIMENSIONS				NOTE
	INCH ES		MM		
	MIN	MAX	MIN	MAX	
A	3.150	NOM	80.01	NOM	
B	1.565	1.585	39.75	40.26	
C	.700	.800	17.78	20.32	
E	.119	.132	3.02	3.35	
F	1.375	REF	34.92	REF	
G	3.55	3.65	90.17	92.71	
H	.590	.620	14.99	15.75	
J	1/4	UNF	FULL		
K	.380	.410	9.65	10.41	∅
L	.185	.195	4.70	4.95	∅
L	.275	.295	6.99	7.49	∅

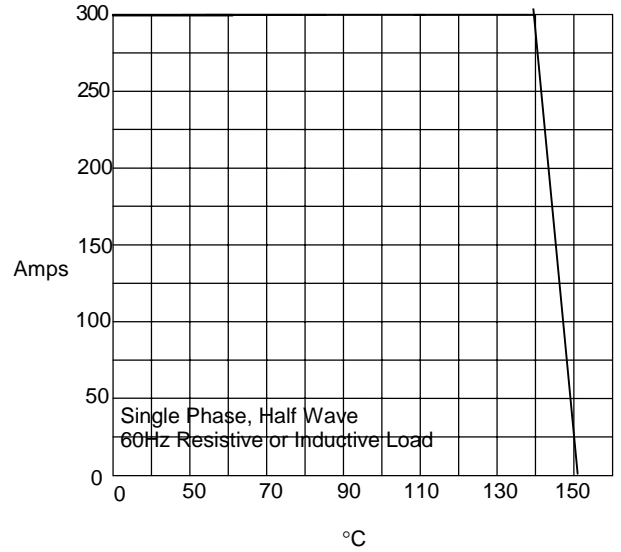
*Pulse Test: Pulse Width 300µsec, Duty Cycle 1%

Figure 1
Typical Forward Characteristics



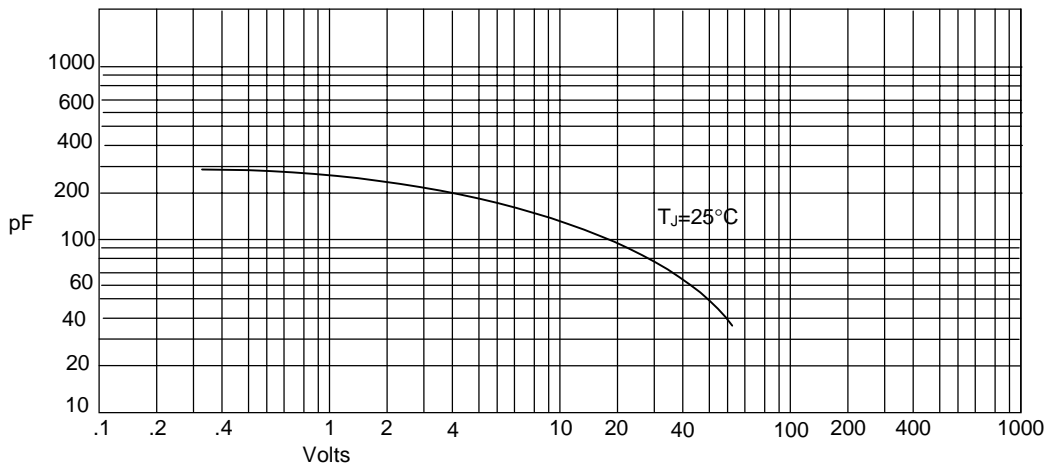
Instantaneous Forward Current - Amperes versus
Instantaneous Forward Voltage - Volts

Figure 2
Forward Derating Curve



Average Forward Rectified Current - Amperes versus
Ambient Temperature - °C

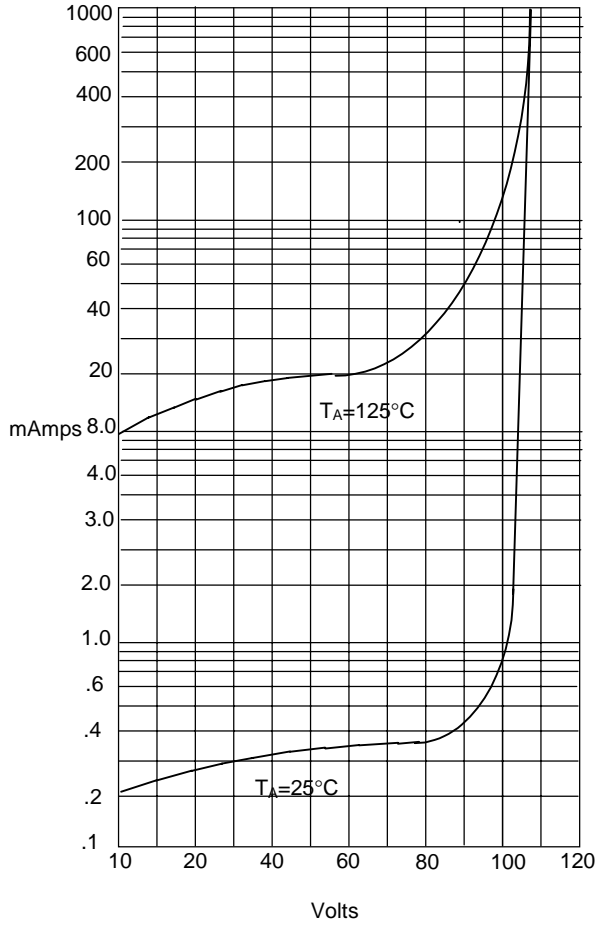
Figure 3
Junction Capacitance



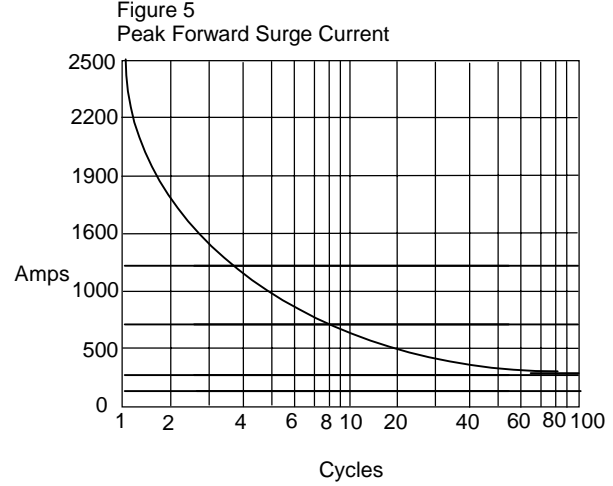
Junction Capacitance - pF versus
Reverse Voltage - Volts



Figure 4
Typical Reverse Characteristics



Instantaneous Reverse Leakage Current - MicroAmperes versus
Percent Of Rated Peak Reverse Voltage - Volts



Peak Forward Surge Current - Amperes versus
Number Of Cycles At 60Hz - Cycles