

HER301 – HER308

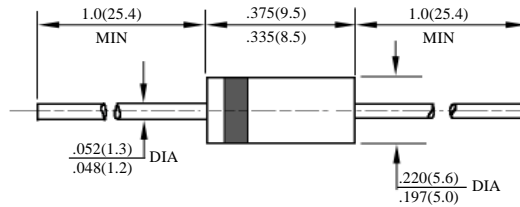
3A 高效二极管

3A HIGH EFFICIENCY DIODES

| 型号 TYPE | 最大反向 峰值电压 Maximum Peak Reverse Voltage | 最大平均正向电流 Maximum Average Rectified Current @ Half-Wave Resistive Load 60Hz | | 最大正向浪涌电流 Maximum Forward Peak Surge Current @ 8.3ms Superimposed | 最大反向 漏电流 Maximum Reverse Current @ PRV @ T _A =25°C | 最大正向电压 Maximum Forward Voltage @ T _A =25°C | | 最大反向 恢复时间 Maximum Reverse Recovery Time | 外型尺寸 Package Dimensions |
|------------|--|--|----|--|---|---|------------------------------------|---|-------------------------------|
| | PRV V _{PK} | I _O @ T _L A _{AV} | °C | I _{FM} (Surge) A _{PK} | I _R μA _{dc} | I _{FM} A _{PK} | V _{FM} V _{PK} | T _{rr} ns | |
| HER301 | 50 | 3.0 | | 200 | 10 | 3.0 | 1.00 | 50 | DO-201AD |
| HER302 | 100 | | | | | | 1.00 | | |
| HER303 | 200 | | | | | | 1.00 | | |
| HER304 | 300 | | | | | | 1.30 | | |
| HER305 | 400 | | | | | | 1.30 | | |
| HER306 | 600 | | | | | | 1.85 | | |
| HER307 | 800 | | | 1.85 | 70 | | | | |
| HER308 | 1000 | | | 1.85 | | | | | |

T_{rr} 测试条件: I_F=0.5A, I_R=1.0A, I_{RR}=0.25A

T_{rr} Test Conditions: I_F=0.5A, I_R=1.0A, I_{RR}=0.25A



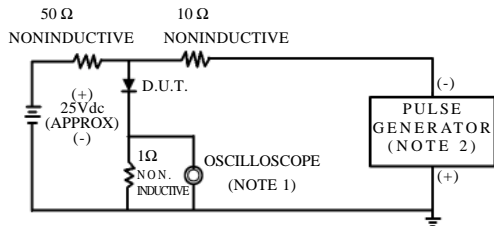
DO – 201AD

HER301 – HER308

3A 高效率二极管额定值与特性曲线

3A RATING & CHARACTERISTIC CURVES OF HIGH EFFICIENCY DIODES

FIG.1-TEST CIRCUIT DIAGRAM AND REVERSE RECOVERY TIME CHARACTERISTIC



NOTES:1.Rise Time=7ns max.
Input Impedance=1megohm.22pF.
2.Rise Time=10ns max.
Source Impedance=50 ohms.

FIG. 2 - TYPICAL FORWARD CURRENT DERATING CURVE

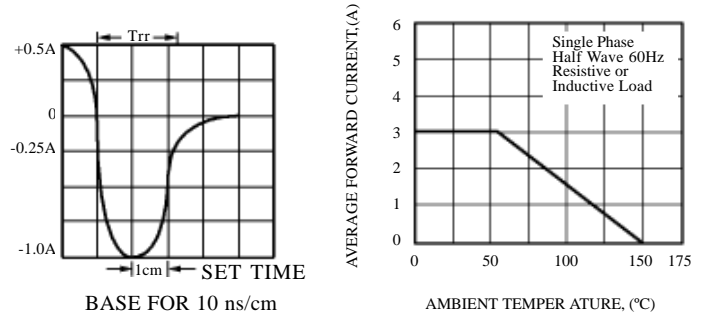


FIG. 3 - TYPICAL REVERSE CHARACTERISTICS

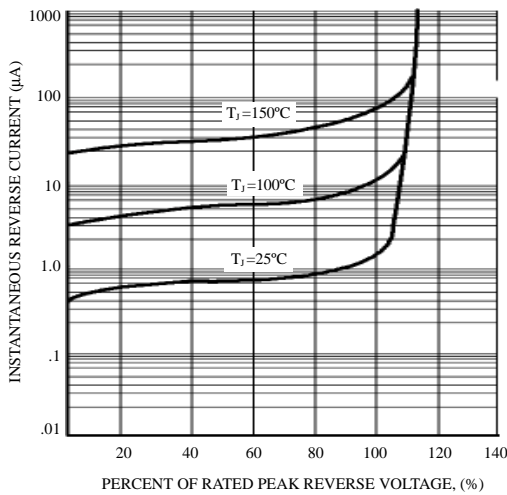


FIG. 4 - TYPICAL INSTANTANEOUS FORWARD CHARACTERISTICS

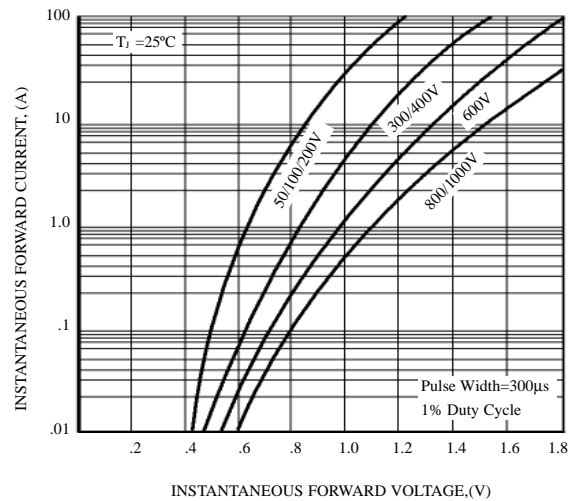


FIG. 5 - MAXIMUM NON-REPETITIVE FORWARD SURGE CURRENT

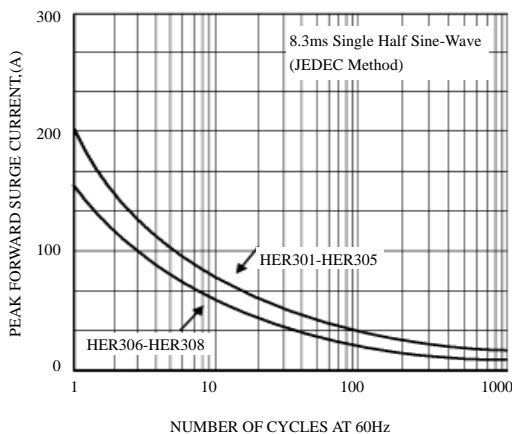


FIG. 6 - TYPICAL JUNCTION CAPACITANCE

