
HD74ALVCH16374

16-bit D-type Flip Flops with 3-state Outputs

HITACHI

ADE-205-123B (Z)
3rd. Edition
December 1999

Description

The HD74ALVCH16374 has sixteen edge trigger D type flip flops with three state outputs in a 48 pin package. Data at the D inputs meeting set up requirements, are transferred to the Q outputs on positive going transitions of the clock input. When the latch enable goes low, data at the D inputs will be retained at the outputs until latch enable returns high again. When a high logic level is applied to the output control input, all outputs go to a high impedance state, regardless of what signals are present at the other inputs and the state of the storage elements. Low voltage and high speed operation is suitable at the battery drive product (note type personal computer) and low power consumption extends the life of a battery for long time operation.

Features

- $V_{CC} = 2.3 \text{ V to } 3.6 \text{ V}$
- Typical V_{OL} ground bounce $< 0.8 \text{ V}$ ($@V_{CC} = 3.3 \text{ V}, T_a = 25^\circ\text{C}$)
- Typical V_{OH} undershoot $> 2.0 \text{ V}$ ($@V_{CC} = 3.3 \text{ V}, T_a = 25^\circ\text{C}$)
- High output current $\pm 24 \text{ mA}$ ($@V_{CC} = 3.0 \text{ V}$)
- Bus hold on data inputs eliminates the need for external pullup / pulldown resistors.

Function Table

Inputs			
\overline{OE}	CK	D	Output Q
H	X	X	Z
L	↑	L	L
L	↑	H	H
L	H or L	X	Q ₀

H : High level

L : Low level

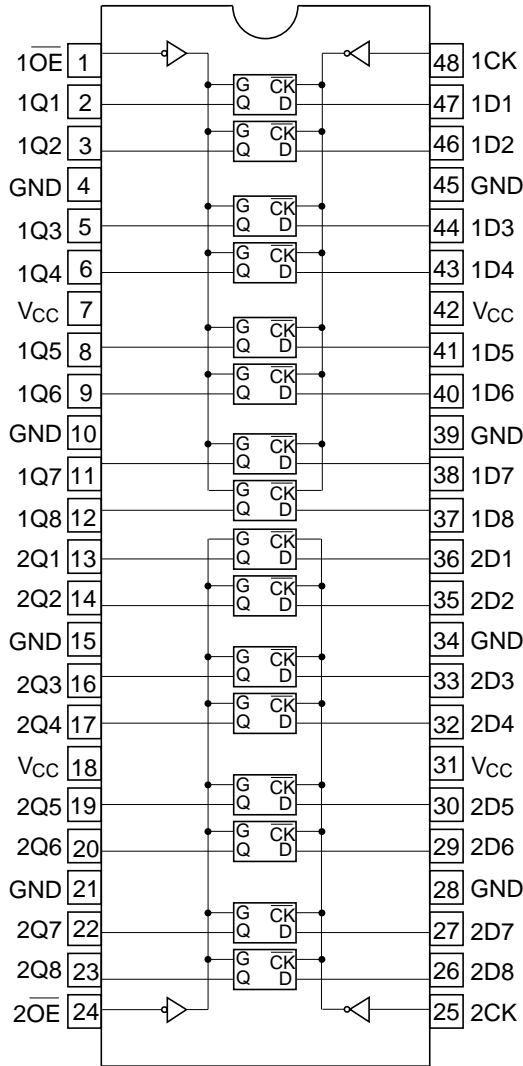
X : Immaterial

Z : High impedance

↑ : Low to high transition

Q₀ : Level of Q before the indicated steady input conditions were established.

Pin Arrangement



(Top view)

Absolute Maximum Ratings

Item	Symbol	Ratings	Unit	Conditions
Supply voltage range	V_{CC}	-0.5 to 4.6	V	
Input voltage ^{*1}	V_I	-0.5 to 4.6	V	
Output voltage ^{*1,2}	V_O	-0.5 to $V_{CC}+0.5$	V	
Input clamp current	I_{IK}	-50	mA	$V_I < 0$
Output clamp current	I_{OK}	± 50	mA	$V_O < 0$ or $V_O > V_{CC}$
Continuous output current	I_O	± 50	mA	$V_O = 0$ to V_{CC}
V_{CC} , GND current / pin	I_{CC} or I_{GND}	± 100	mA	
Maximum power dissipation at $T_a = 55^\circ\text{C}$ (in still air) ^{*3}	P_T	0.85	W	TSSOP
Storage temperature	T_{stg}	-65 to +150	$^\circ\text{C}$	

Notes: Stresses beyond those listed under "absolute maximum ratings" may cause permanent damage to the device. These are stress ratings only, and functional operation of the device at these or any other conditions beyond those indicated under "recommended operating conditions" is not implied. Exposure to absolute maximum rated conditions for extended periods may affect device reliability.

1. The input and output negative voltage ratings may be exceeded if the input and output clamp current ratings are observed.
2. This value is limited to 4.6 V maximum.
3. The maximum package power dissipation is calculated using a junction temperature of 150°C and a board trace length of 750 mils.

Recommended Operating Conditions

Item	Symbol	Ratings	Unit	Conditions
Supply voltage	V_{CC}	2.3 to 3.6	V	
Input / Output voltage	V_I	0 to V_{CC}	V	\overline{OE} , CK, D
	V_O	0 to V_{CC}	V	Q
Operating temperature	T_a	-40 to 85	$^\circ\text{C}$	
Output current	I_{OH}	-12	mA	$V_{CC} = 2.3\text{ V}$
		-12	mA	$V_{CC} = 2.7\text{ V}$
		-24	mA	$V_{CC} = 3.0\text{ V}$
	I_{OL}	12	mA	$V_{CC} = 2.3\text{ V}$
		12	mA	$V_{CC} = 2.7\text{ V}$
		24	mA	$V_{CC} = 3.0\text{ V}$
Input rise / fall time	t_r, t_f	10	ns/V	

Note: Unused or floating control pins must be held high or low.

Electrical Characteristics

Item	Symbol	V _{CC} (V) ¹	Ta = -40 to 85°C		Unit	Test Conditions
			Min	Max		
Input voltage	V _{IH}	2.3 to 2.7	1.7	—	V	
		2.7 to 3.6	2.0	—	V	
	V _{IL}	2.3 to 2.7	—	0.7	V	
		2.7 to 3.6	—	0.8	V	
Output voltage	V _{OH}	Min to Max	V _{CC} -0.2	—	V	I _{OH} = -100 μA
		2.3	2.0	—	V	I _{OH} = -6 mA, V _{IH} = 1.7 V
		2.3	1.7	—	V	I _{OH} = -12 mA, V _{IH} = 1.7 V
		2.7	2.2	—	V	I _{OH} = -12 mA, V _{IH} = 2.0 V
		3.0	2.4	—	V	I _{OH} = -12 mA, V _{IH} = 2.0 V
		3.0	2.0	—	V	I _{OH} = -24 mA, V _{IH} = 2.0 V
	V _{OL}	Min to Max	—	0.2	V	I _{OL} = 100 μA
		2.3	—	0.4	V	I _{OL} = 6 mA, V _{IL} = 0.7 V
		2.3	—	0.7	V	I _{OL} = 12 mA, V _{IL} = 0.7 V
		2.7	—	0.4	V	I _{OL} = 12 mA, V _{IL} = 0.8 V
		3.0	—	0.55	V	I _{OL} = 24 mA, V _{IL} = 0.8 V
Input current	I _{IN}	3.6	—	±5.0	μA	V _{IN} = V _{CC} or GND
	I _{IN(hold)}	2.3	45	—	μA	V _{IN} = 0.7 V
		2.3	-45	—	μA	V _{IN} = 1.7 V
		3.0	75	—	μA	V _{IN} = 0.8 V
		3.0	-75	—	μA	V _{IN} = 2.0 V
		3.6	—	±500	μA	V _{IN} = 0 to 3.6 V
Off state output current ²	I _{OZ}	3.6	—	±10	μA	V _{OUT} = V _{CC} or GND
Quiescent supply current	I _{CC}	3.6	—	40	μA	V _{IN} = V _{CC} or GND
	ΔI _{CC}	3.0 to 3.6	—	750	μA	One input at (V _{CC} -0.6)V, other inputs at V _{CC} or GND

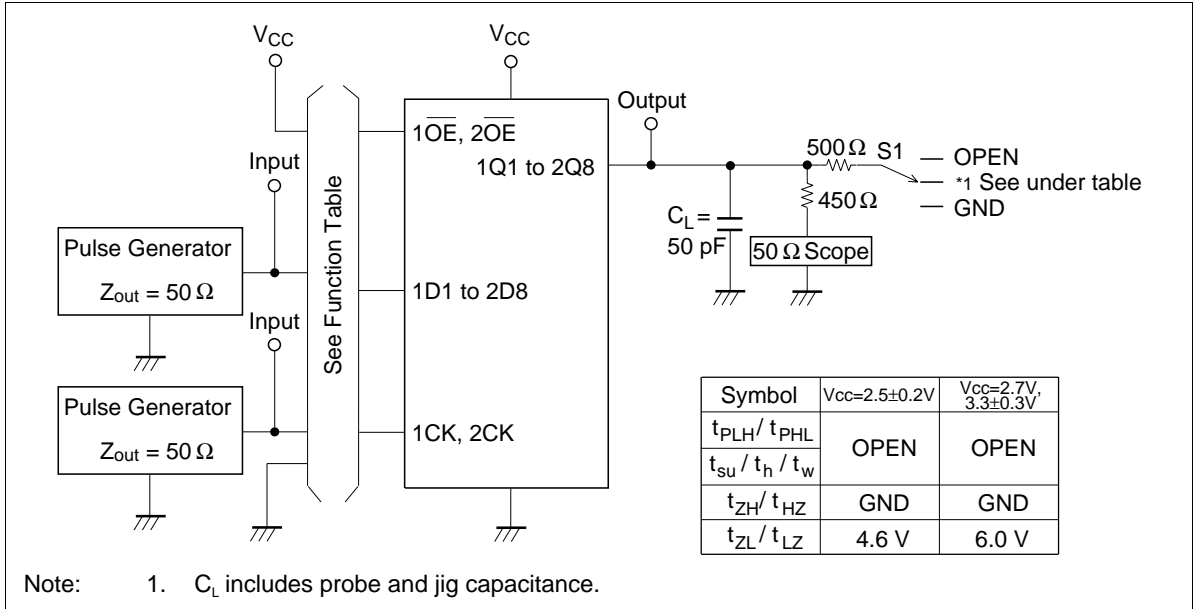
Notes: 1. For conditions shown as Min or Max, use the appropriate values under recommended operating conditions.

2. For I/O ports, the parameter I_{OZ} includes the input leakage current.

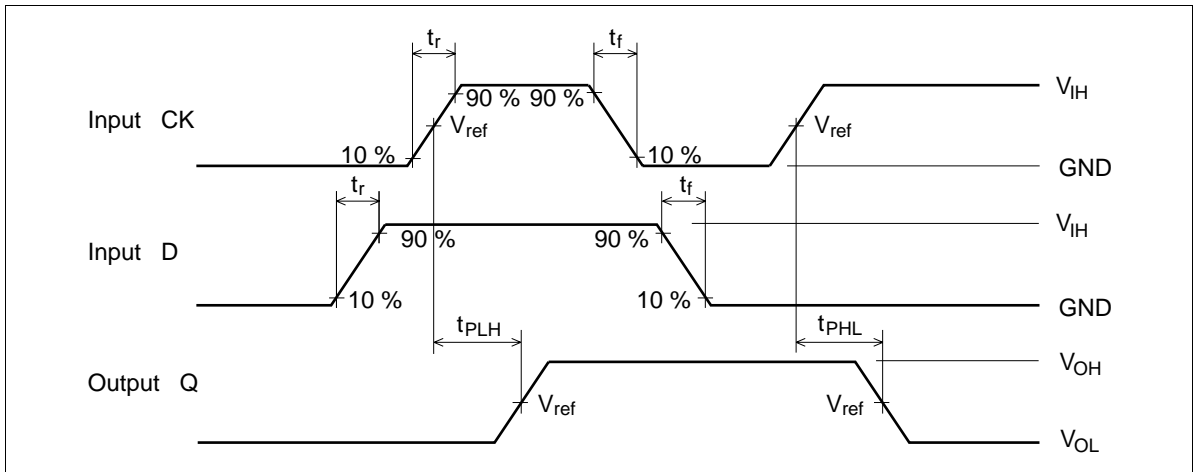
Switching Characteristics

Item	Symbol	V _{CC} (V)	Ta = -40 to 85°C			Unit	From (Input) To (Output)	
			Min	Typ	Max			
Maximum clock frequency	f _{max}	2.5±0.2	150	—	—	MHz		
		2.7	150	—	—			
		3.3±0.3	150	—	—			
Propagation delay time	t _{PLH}	2.5±0.2	1.0	—	5.3	ns	CK	Q
	t _{PHL}	2.7	—	—	4.9			
		3.3±0.3	1.0	—	4.2			
Output enable time	t _{ZH}	2.5±0.2	1.0	—	6.2	ns	\overline{OE}	Q
	t _{ZL}	2.7	—	—	5.9			
		3.3±0.3	1.0	—	4.8			
Output disable time	t _{HZ}	2.5±0.2	1.7	—	5.3	ns	\overline{OE}	Q
	t _{LZ}	2.7	—	—	4.7			
		3.3±0.3	1.2	—	4.3			
Setup time	t _{su}	2.5±0.2	2.1	—	—	ns		
		2.7	2.2	—	—			
		3.3±0.3	1.9	—	—			
Hold time	t _h	2.5±0.2	0.6	—	—	ns		
		2.7	0.5	—	—			
		3.3±0.3	0.5	—	—			
Pulse width	t _w	2.5±0.2	3.3	—	—	ns		
		2.7	3.3	—	—			
		3.3±0.3	3.3	—	—			
Input capacitance	C _{IN}	3.3	—	3.0	—	pF	Control inputs	
		3.3	—	6.0	—		pF	Inputs
Output capacitance	C _O	3.3	—	7.0	—	pF		

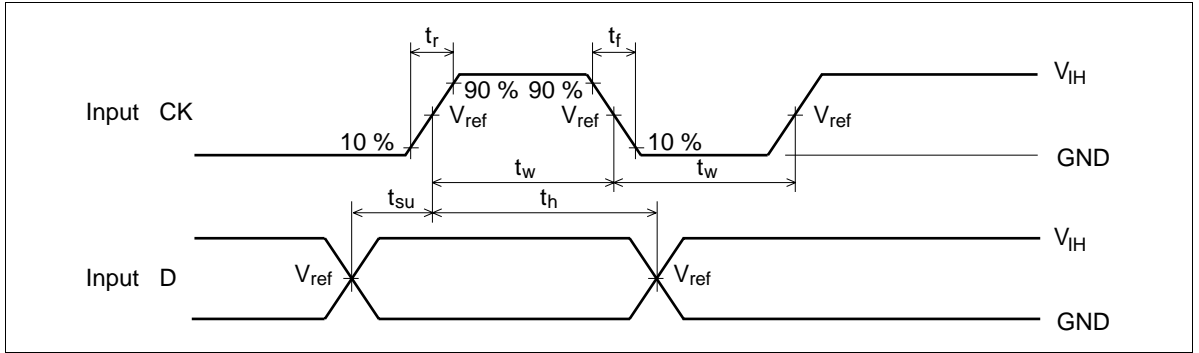
Test Circuit



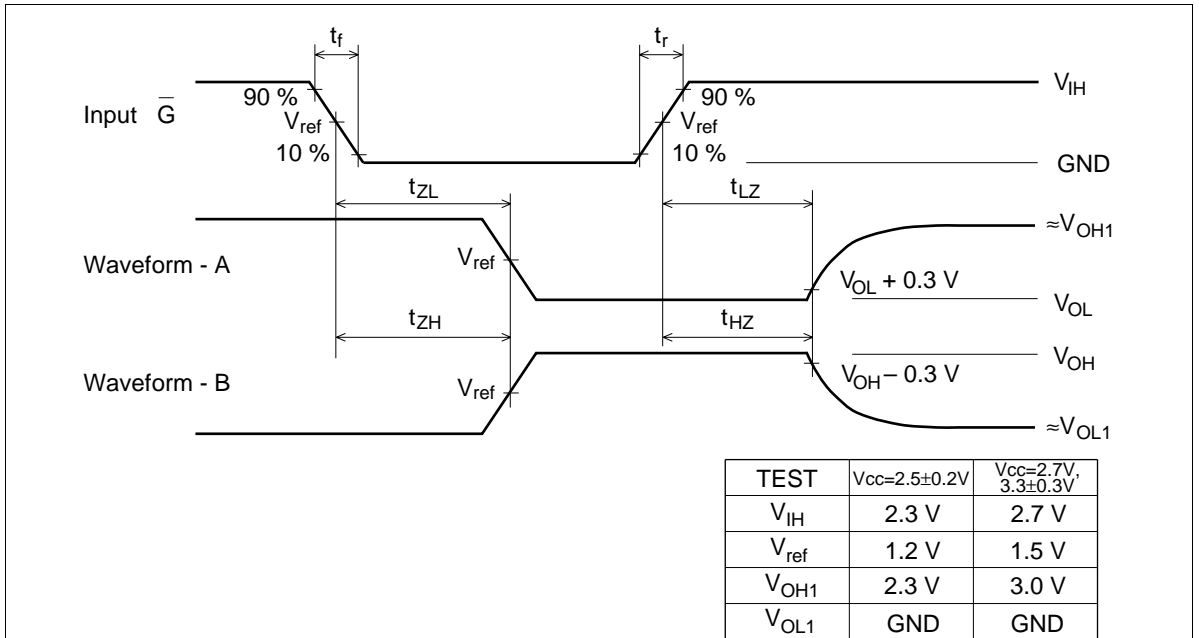
Waveforms – 1



Waveforms – 2



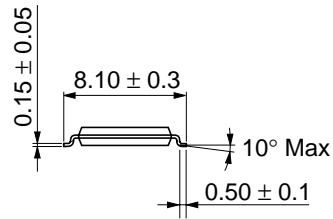
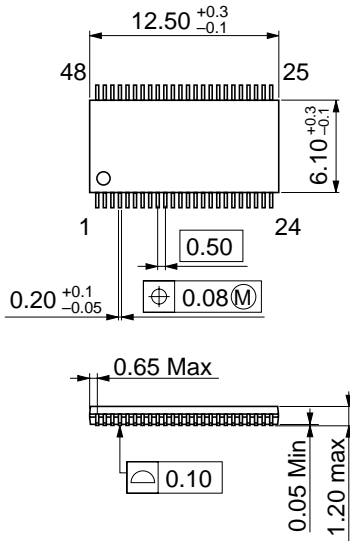
Waveforms – 3



- Notes:
- $t_r = 2.5 \text{ ns}$, $t_f = 2.5 \text{ ns}$
 - Input waveform : PRR = 10 MHz, duty cycle 50%.
 - Waveform-A shows input conditions such that the output is "L" level when enable by the output control.
 - Waveform-B shows input conditions such that the output is "H" level when enable by the output control.

Package Dimensions

Unit : mm



Hitachi code	TTP-48DC
EIAJ code	—
JEDEC code	—

Cautions

1. Hitachi neither warrants nor grants licenses of any rights of Hitachi's or any third party's patent, copyright, trademark, or other intellectual property rights for information contained in this document. Hitachi bears no responsibility for problems that may arise with third party's rights, including intellectual property rights, in connection with use of the information contained in this document.
2. Products and product specifications may be subject to change without notice. Confirm that you have received the latest product standards or specifications before final design, purchase or use.
3. Hitachi makes every attempt to ensure that its products are of high quality and reliability. However, contact Hitachi's sales office before using the product in an application that demands especially high quality and reliability or where its failure or malfunction may directly threaten human life or cause risk of bodily injury, such as aerospace, aeronautics, nuclear power, combustion control, transportation, traffic, safety equipment or medical equipment for life support.
4. Design your application so that the product is used within the ranges guaranteed by Hitachi particularly for maximum rating, operating supply voltage range, heat radiation characteristics, installation conditions and other characteristics. Hitachi bears no responsibility for failure or damage when used beyond the guaranteed ranges. Even within the guaranteed ranges, consider normally foreseeable failure rates or failure modes in semiconductor devices and employ systemic measures such as fail-safes, so that the equipment incorporating Hitachi product does not cause bodily injury, fire or other consequential damage due to operation of the Hitachi product.
5. This product is not designed to be radiation resistant.
6. No one is permitted to reproduce or duplicate, in any form, the whole or part of this document without written approval from Hitachi.
7. Contact Hitachi's sales office for any questions regarding this document or Hitachi semiconductor products.

HITACHI

Hitachi, Ltd.

Semiconductor & Integrated Circuits.
Nippon Bldg., 2-6-2, Ohte-machi, Chiyoda-ku, Tokyo 100-0004, Japan
Tel: Tokyo (03) 3270-2111 Fax: (03) 3270-5109

URL North America : <http://semiconductor.hitachi.com/>
 Europe : <http://www.hitachi-eu.com/hel/ecg>
 Asia (Singapore) : <http://www.has.hitachi.com.sg/grp3/sicd/index.htm>
 Asia (Taiwan) : http://www.hitachi.com.tw/E/Product/SICD_Frame.htm
 Asia (HongKong) : <http://www.hitachi.com.hk/eng/bo/grp3/index.htm>
 Japan : <http://www.hitachi.co.jp/Sicd/index.htm>

For further information write to:

Hitachi Semiconductor
(America) Inc.
179 East Tasman Drive,
San Jose, CA 95134
Tel: <1> (408) 433-1990
Fax: <1>(408) 433-0223

Hitachi Europe GmbH
Electronic components Group
Dornacher StraÙe 3
D-85622 Feldkirchen, Munich
Germany
Tel: <49> (89) 9 9180-0
Fax: <49> (89) 9 29 30 00

Hitachi Europe Ltd.
Electronic Components Group.
Whitebrook Park
Lower Cookham Road
Maidenhead
Berkshire SL6 8YA, United Kingdom
Tel: <44> (1628) 585000
Fax: <44> (1628) 778322

Hitachi Asia Pte. Ltd.
16 Collyer Quay #20-00
Hitachi Tower
Singapore 049318
Tel: 535-2100
Fax: 535-1533

Hitachi Asia Ltd.
Taipei Branch Office
3F, Hung Kuo Building, No.167,
Tun-Hwa North Road, Taipei (105)
Tel: <886> (2) 2718-3666
Fax: <886> (2) 2718-8180

Hitachi Asia (Hong Kong) Ltd.
Group III (Electronic Components)
7/F., North Tower, World Finance Centre,
Harbour City, Canton Road, Tsim Sha Tsui,
Kowloon, Hong Kong
Tel: <852> (2) 735 9218
Fax: <852> (2) 730 0281
Telex: 40815 HITEC HX

Copyright ' Hitachi, Ltd., 1999. All rights reserved. Printed in Japan.