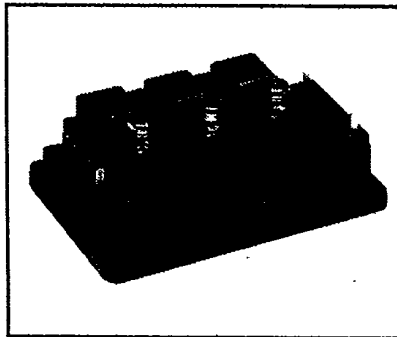
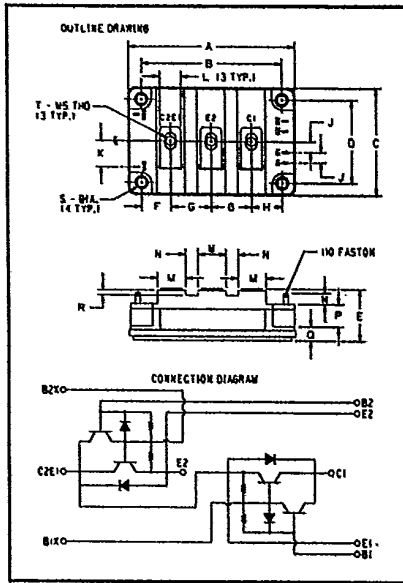




KD321A15 Tentative

Powerex, Inc., Hillis Street, Youngwood, Pennsylvania 15697 (412) 925-7272

**Fast Switching
Dual Darlington
Transistor Module
150 Amperes/125 Volts**



**KD321A15
Fast Switching Dual Darlington
Transistor Module
150 Amperes/125 Volts**

Description

Powerex Fast Switching Dual Darlington Transistor Modules are designed for use in Low Voltage switching applications. The modules are isolated for easy mounting of multiple units.

Features:

- Isolated Mounting
- Planar Chips
- Low $V_{CE(SAT)}$
- Fast Switching

Applications:

- 20 KiloHertz Inverters
- AC & DC Motor Control
- Switching Power Supplies

Ordering Information

Example: Select the complete eight digit module part number for the rating you desire from the table - i.e. KD321A15 is a 125 Volt, 150 Ampere Fast Switching Dual Darlington Module.

**125 Volt KD321A15
Outline Drawing**

Dimension	Inches	Millimeters
A	3.740 Max.	95 Max.
B	3.150 ± .01	80 ± 0.25
C	2.441 Max.	62 Max.
D	1.890 ± .01	48 ± 0.25
E	1.181 Max.	30 Max.
F	.650	16.5
G	.906	23
H	.689	17.5
J	.236	6
K	.596	15
L	.472	12
M	.630	16
N	.276	7
P	.512	13
Q	.315	8
R	.118	3
S	.216 Dia.	5.5 Dia.
T	M5 Metric	M5

Type	$V_{CE(SUS)}$ Volts (125)	Current Rating Amperes (x10)
KD32	1A	15

POWEREX**Tentative**

Powerex, Inc., Hillis Street, Youngwood, Pennsylvania 15697 (412) 925-7272

KD321A15
Fast Switching Dual Darlington Transistor Module
150 Amperes/125 Volts**Maximum Ratings $T_J = 25^\circ\text{C}$ unless otherwise specified**

	Symbol	KD321A15	Units
Junction Temperature	T_J	-40 to 150	$^\circ\text{C}$
Storage Temperature	T_{STG}	-40 to 125	$^\circ\text{C}$
Collector-Emitter Sustaining Voltage	$V_{CE(SUS)}$	125	Volts
Collector-Base Voltage	V_{CBO}	150	Volts
Emitter-Base Voltage	V_{EBO}	7	Volts
Collector-Emitter Voltage $V_{BE} = -2\text{V}$	V_{CEV}	150	Volts
Continuous Collector Current	I_C	150	Amperes
Diode Forward Current	I_{FM}	150	Amperes
Continuous Base Current	I_B	10	Amperes
Diode Surge Current	I_{FSM}	1500	Amperes
Power Dissipation	P_T	400	Watts
Max. Mounting Torque M5 Terminal Screws	—	17	in.-lb.
Max. Mounting Torque M5 Mounting Screws	—	17	in.-lb.
Module Weight	—	420	Grams
V isolation	V_{RMS}	1500	Volts

Electrical and Mechanical Characteristics $T_J = 25^\circ\text{C}$ unless otherwise specified

Characteristics	Symbol	Test Conditions	KD321A15			Units
			Min.	Typ.	Max.	
Collector Cutoff Current	I_{CEV}	$V_{CE} = 150\text{V}, V_{BE} = -2\text{V}$	—	—	1	mA
Collector Cutoff Current	I_{CEV}	$V_{CE} = 150\text{V}, V_{BE} = -2\text{V}$ $T_C = 125^\circ\text{C}$	—	—	3	mA
Emitter Cutoff Current	I_{EBO}	$V_{EB} = 7\text{V}$	—	—	100	mA
DC Current Gain	h_{FE}	$I_C = 150\text{A}, V_{CE} = 2.0\text{V}$	200	—	—	—
Diode Forward Voltage	V_{FM}	$I_{FM} = 150\text{A}$	—	—	1.60	V
Collector-Emitter Saturation Voltage	$V_{CE(SAT)}$	$I_C = 150\text{A}, I_B = 1.0\text{A}$	—	—	1.5	V
Base-Emitter Saturation Voltage	$V_{BE(SAT)}$	$I_C = 150\text{A}, I_B = 1.0\text{A}$	—	—	2.5	V
Resistive Turn On	t_{on}	$V_{CC} = 75\text{V}$	—	—	2.0	μs
Load Storage Time	t_s	$I_C = 150\text{A}$	—	—	4.0	μs
Switch Times Fall Time	t_f	$I_{B1} = -I_{B2} = 1.0\text{A}$	—	—	2.0	μs
Thermal Resistance, Junction to Sink Lubricated	$R_{\theta CS}$	Per Half Module	—	—	0.1	$^\circ\text{C/W}$
Thermal Resistance, Junction to Case	$R_{\theta JC}$	Transistor Part	—	—	.31	$^\circ\text{C/W}$
Thermal Resistance, Junction to Case	$R_{\theta JC}$	Diode Part	—	—	.8	$^\circ\text{C/W}$

This specification is tentative;
therefore, performance curves are not
included. Please contact the Powerex
sales representative nearest you for
further information.